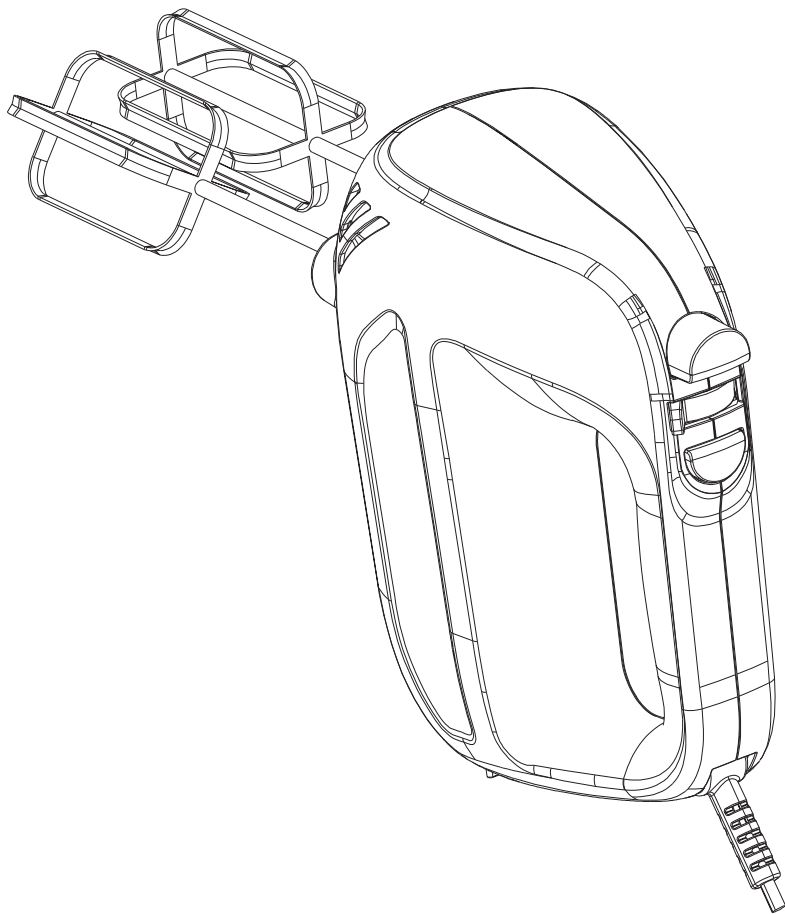


George.
home



GHM301B-22 Hand mixer

User Guide

220-240V~50Hz, 300W

IMPORTANT: RETAIN FOR FUTURE REFERENCE

About this guide

We're here to help you get the most from your hand mixer, so please keep hold of this manual for future use.

WARNINGS:

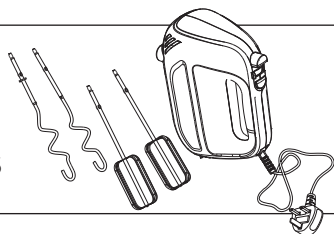
THIS PRODUCT WAS DESIGNED AND MANUFACTURED TO MEET STRICT QUALITY AND SAFETY STANDARDS. THERE ARE, HOWEVER, SOME OPERATIONAL PRECAUTIONS THAT YOU SHOULD BE AWARE OF.

1. Read all warnings & instructions in this manual to ensure you get the best out of your product.
2. For household use only.
3. If the supply cord is damaged, it must be replaced by the manufacturer, its service agent or similarly qualified persons in order to avoid hazard.
4. This appliance shall not be used by children. Keep the appliance and its cord out of reach of children.
5. Appliances can be used by persons with reduced physical, sensory or mental capabilities or lack of experience and knowledge if they have been given supervision or instruction concerning use of the appliance in a safe way and if they understand the hazards involved.
6. Children shall not play with the appliance.
7. To avoid fire, electric shock, or injury, never immerse the mixer, cord, or plug in water or liquid. Do not use with wet hands.
8. Always disconnect the appliance from the supply before assembling, disassembling or cleaning.
9. Switch off the appliance and disconnect from supply before changing accessories or approaching parts that move in use.

10. Do not continuously operate for more than 5 minutes, at any speed setting, at a time as this can overheat the motor. For turbo speed, continuous operation should be less than 1 minute. Always allow the motor to cool to room temperature before continuing to use.
 11. Before connecting the hand mixer to the power, check the voltage shown on the appliance corresponds with the voltage in your home. If it doesn't, contact your local store.
 12. Do not use if the appliance, cord or plug is damaged.
 13. The cord shouldn't hang over the edge of a table or counter, or touch a hot surface.
 14. Do not place on or near gas, electric burners or ovens.
 15. Keep away from harsh or abrasive cleaning agents or solvents.
 16. Remove all packaging prior to use. Inspect the product for any damage before use. If damage is found, notify ASDA to exchange the product.
 17. Do not use attachments not recommended by the manufacturer.
 18. Don't use the mixer for anything other than its intended use.
 19. Please don't dismantle. If a fault occurs, have the mixer inspected in a qualified repair shop or return to us at ASDA.
 20. Keep fingers, hair, clothing and utensils away from all moving parts. Only use a scraper when the appliance is not in use.
 21. Never leave unattended when in use.
 22. Remove beaters from the hand mixer before washing them.
 23. Do not use the appliance to mix really hard ingredients.
- NOTE:** Please avoid letting the unit come into contact with acidic food.

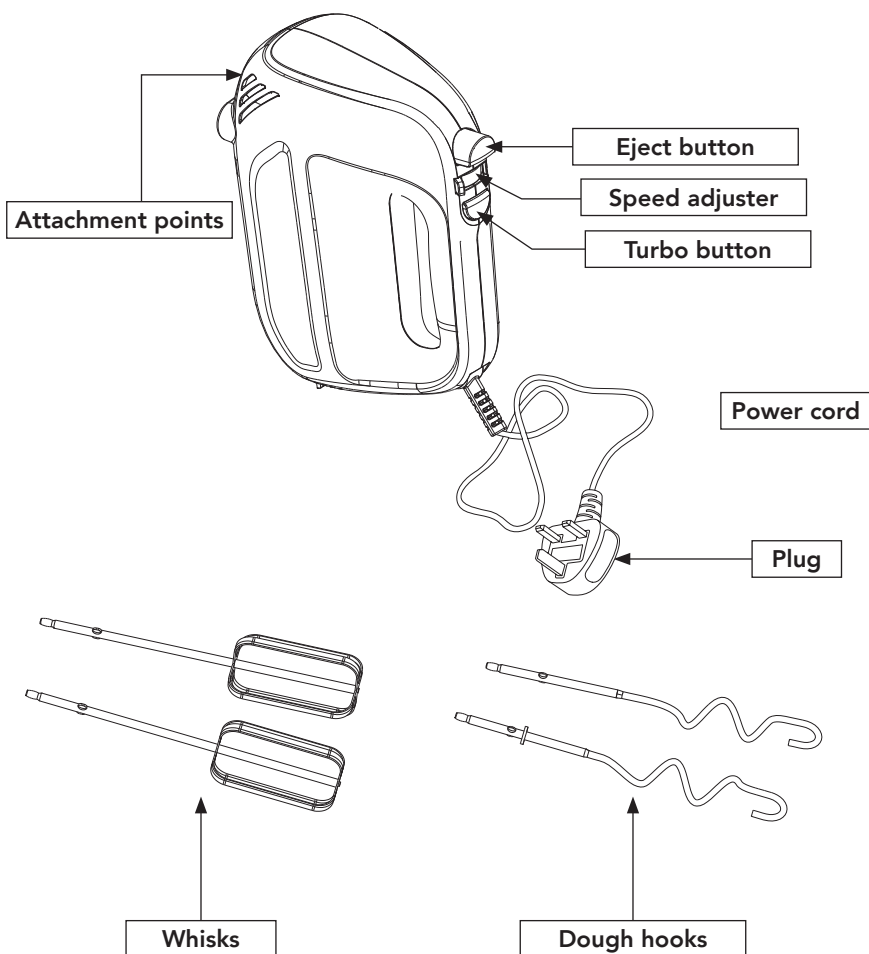
You should have

Hand mixer, whisks & dough hooks



How to...

...recognise the parts of your hand mixer

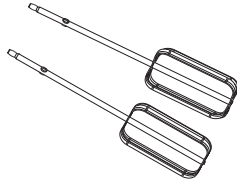


How to...

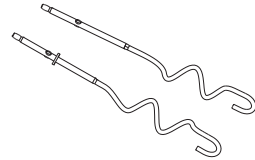
...assemble/disassemble the attachments on your hand mixer

Select the desired attachments, depending on your mixing task:

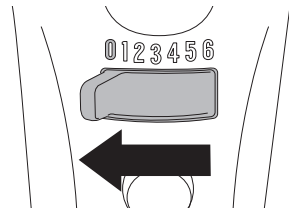
Whisks
for whisking,
mixing and
beating.



Dough hooks
for kneading
bread and pasta
dough etc.

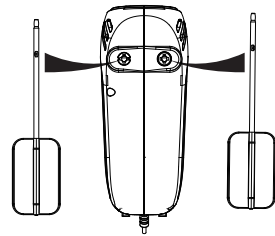


Before inserting the attachments, ensure the mixer is not plugged in and the speed adjuster is set to '0'.



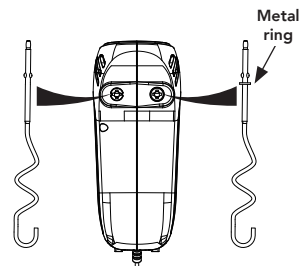
TO FIT THE WHISKS:

1. Slot the whisks into the attachment points. The whisks are the same so can slot into either point.
2. Push the whisks in until they click into place (you may need to rotate the whisks slightly to fully insert them).
3. Always ensure the whisks are fully inserted before using the mixer.



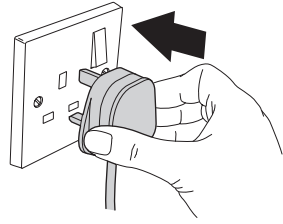
TO FIT THE DOUGH HOOKS:

1. Slot the dough hook with the metal ring into the right attachment point.
2. Slot the other dough hook into the left attachment point.
3. Push the dough hooks in until they click into place (you may need to rotate the dough hooks slightly to fully insert them).
4. Always ensure the dough hooks are fully inserted before using the mixer.

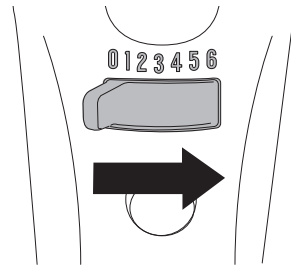


USING THE MIXER

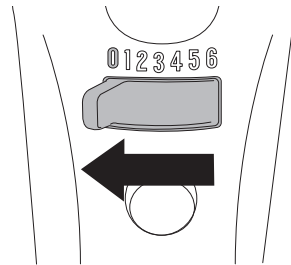
1. Plug the mixer into the power socket and switch on.



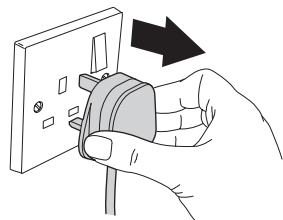
2. To turn the mixer on, slide the speed adjuster to the desired speed (between 1 and 6), 1 being the slowest and 6 the highest. The mixer will run at a higher speed when pressing the **turbo button**.
3. You should always start the mixer at the lowest speed and gradually work up to the faster speeds to prevent splashing. Remember to never continuously use the mixer for more than two cycles of 5 minutes at a time and to allow to cool for 20 minutes before using again. For turbo speed, continuous operation should be less than 1 minute. Always allow the motor to cool to room temperature before continuing to use.



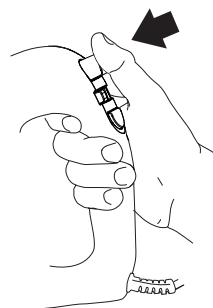
4. When you've finished using the mixer, simply turn it off by sliding the speed adjuster to the off position '0'.



5. Turn off at the socket and unplug.



6. Remove the whisks/dough hooks by pressing the eject button until they pop out.
Please note the whisks/dough hooks can only be removed when the speed adjuster is set to the off position '0'.



As a guide for mixing using the whisks, please refer to the table. If the mix is thick, sticky flour or dough, use the dough hooks.

Speed	Procedure
1	Use for mixing dry ingredients and for folding in liquid ingredients, such as egg whites and whipped cream.
2	Use for creaming, stirring, making sauces, gravies, puddings and quick breads.
3	Use for all-purpose mixing, such as preparing packaged cake mixes and creaming sugar & butter together.
4	Use for smoothing batters.
5 & 6	Use for whipping cream, beating egg whites and making mashed potatoes.

How to...

...clean your hand mixer

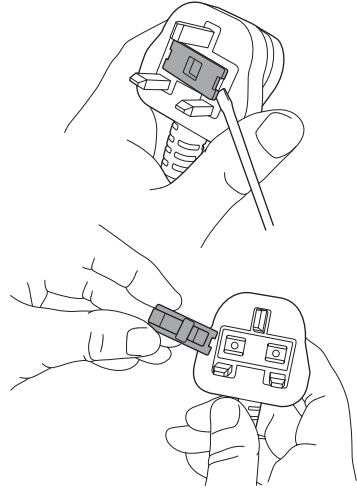
Make sure the hand mixer is switched off and disconnected from the power.

1. Wipe over the outside surfaces with a damp cloth and wipe any excess food particles from the power cord (never immerse the mixer or power cord in water or liquid).
2. Wash the whisks and dough hooks in warm soapy water and dry thoroughly. The whisks and dough hooks are dishwasher safe.
3. Ensure all items are completely dry before storing the hand mixer in a cool, dry place.

How to...

...change the fuse

1. Only use a 3A fuse.
2. To change the fuse, place a screwdriver into the recess of the plug cover and pull the fuse holder upward until it's free.
3. Slide the fuse out and pop in the replacement.
4. Slot the fuse holder back into the recess and push down until it locks into place.



Notes...



If for any reason you're not completely satisfied with our product, return it within 100 days with your proof of purchase, and we'll give you an exchange or a refund.

UK Mainland stores only.
Excludes franchises.

The guarantee excludes flat pack furniture, which can't be returned if it has been partly or fully assembled unless faulty or mis-described.

Also excludes mattresses, which can't be returned for hygiene reasons once used, unless faulty or mis-described.



Customer services information

If you have any problems, or just need some advice or more information on your product, then don't hesitate to contact customer services at the telephone number or address shown opposite. N.B. When calling or writing please have your product site code handy.

Call

0800 952 0101

Write

ASDA, Leeds LS11 5AD

Product name: **GHM301B-22 Hand Mixer**

Product site code: **15A.09.22.233**



To qualify for the 2 year warranty the appliance must have been used according to the manufacturer's instructions. For example kettles should have been regularly de-scaled.

If your appliance stops working or develops a fault then return it to your nearest store and we will happily replace or refund the item, with exception of the below exclusions:

EXCLUSIONS

ASDA shall not be liable to replace goods under the terms of the warranty where:

1. The fault has been caused or is attributable to accidental use, misuse, negligent use or use contrary to the user manual's recommendations or where the fault has been caused by power surges or damage caused in transit.
2. The appliance has been used on a voltage supply other than that described on the product rating label.
3. Repairs have been attempted by persons other than our service staff (or authorised dealer).
4. Where the appliance has been used for hire purposes or non-domestic use.
5. ASDA are not liable to carry out any type of servicing work, under the warranty.

This warranty does not confer any rights other than those expressly set out above and does not cover any claims for consequential loss or damage. This warranty is offered as an additional benefit and does not affect your statutory rights as a consumer.

If for any reason this item is replaced during the 2 year warranty period, the warranty on the new item will be calculated from original purchase date. It is vital to retain your original proof of purchase to indicate the date of initial purchase.

Copyright

© 2022 ASDA Stores Limited.
All other trademarks appearing herein are the property of their representative owners.
Specifications are subject to change without notice.

Manufactured for:
ASDA, Leeds LS11 5AD/ ASDA, Antrim BT41 4GY

Disposal

This symbol on the product or in the instructions means that your electrical and electronic equipment should be disposed at the end of its life separately from your household waste. There are separate collection systems for recycling in the UK.

For more information, please contact the local authority or your retailer where you purchased the product.

