

George.  
home



## GGTKB-22 Glass Kettle

User Guide

220-240V~50-60Hz, 2520-3000W

**IMPORTANT: RETAIN FOR FUTURE REFERENCE**



# About this guide

We've written this manual to help you get the most from your glass kettle. Please hold on to it for future reference.

## WARNINGS:

**THIS PRODUCT WAS DESIGNED AND MANUFACTURED TO MEET STRICT QUALITY AND SAFETY STANDARDS. THERE ARE, HOWEVER, SOME OPERATION PRECAUTIONS YOU SHOULD BE AWARE OF.**

**CAUTION. RISK OF SCALDING. DO NOT OPEN LID WHILST KETTLE IS HOT. BE CAREFUL WHEN POURING BOILING WATER FROM YOUR KETTLE AS THIS CAN RESULT IN INJURY. ENSURE THE SWITCH IS NOT OBSTRUCTED OR THE KETTLE WILL NOT SWITCH OFF.**

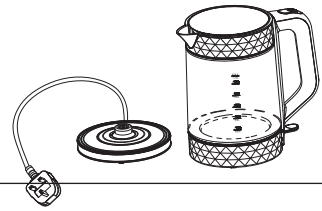
- 1. Read all warnings & instructions in this manual to ensure you get the best out of your product.**
- 2. For household use only. Not for use outdoors.**
- 3. This appliance is only suitable for domestic use and is not designed for commercial use.**
- 4. This appliance can be used by children aged from 8 years and above if they have been given supervision or instruction concerning use of the appliance in a safe way and if they understand the hazards involved. Cleaning and user maintenance shall not be made by children unless they are older than 8 and supervised. Keep the appliance and its cord out of reach of children aged less than 8 years.**

5. This appliance can be used by persons with reduced physical, sensory or mental capabilities or lack of experience and knowledge if they have been given supervision or instruction concerning use of the appliance in a safe way and understand the hazards involved.
6. Children shall not play with the appliance.
7. If the supply cord is damaged, it must be replaced by the manufacturer, its service agent or similarly qualified persons in order to avoid a hazard.
8. Before connecting the kettle to the power, check the voltage shown on the appliance base corresponds with the voltage in your home. If it doesn't, contact your dealer and don't use the kettle.
9. If the kettle is overfilled, boiling water may be ejected.
10. Extreme caution must be used when moving an appliance containing hot water.
11. Always disconnect the kettle when not in use and before cleaning. Allow to cool.
12. Only use the kettle with the base provided. Do not use the base for any other purpose.
13. When pouring, don't tip the kettle too fast. Always use the handle and don't touch the body (as this can get very hot).
14. This appliance is not intended to heat liquid other than water.
15. The cord shouldn't hang over the edge of a table or counter, or touch a hot surface.
16. Keep away from hot gas and electrical burners.
17. Keep the cord and appliance out of reach of children.
18. Remove all packaging prior to use. Inspect the product for any damage before use. If damage is found, notify ASDA to exchange the product.
19. Keep away from harsh or abrasive cleaning agents or solvents.

- 20. Do not use attachments not recommended by the manufacturer.**
- 21. Don't use the kettle for anything other than its intended use.**
- 22. Please don't dismantle. If a fault occurs have the kettle inspected in a qualified repair shop or return to us at ASDA.**
- 23. To avoid fire, electric shock, or injury, never immerse the kettle, cord or plug in water or liquid. Do not use with wet hands.**
- 24. Always make sure the lid is closed while the kettle is boiling and avoid contact with the steam coming from the spout.**
- 25. Always place on a firm, level surface, out of reach of children.**
- 26. Be careful when refilling an already hot kettle.**
- 27. Avoid boiling without water as this can damage the heating elements.**
- 28. ASDA does not recommend allowing children to operate this appliance.**
- 29. WARNING! Avoid spillage on the connector.**
- 30. Regarding the instructions for cleaning surfaces, please refer to chapter "How to clean the kettle".**
- 31. WARNING! Misuse may lead to injury.**
- 32. WARNING! The heating element surface is subject to residual heat after use.**
- 33. Environmental information: If at anytime in the future you should need to dispose of this product, please note that, in the UK, waste electrical products/batteries should not be disposed of with household waste.**
- 34. Your local authority can advise where to recycle electrical products at end of life.**

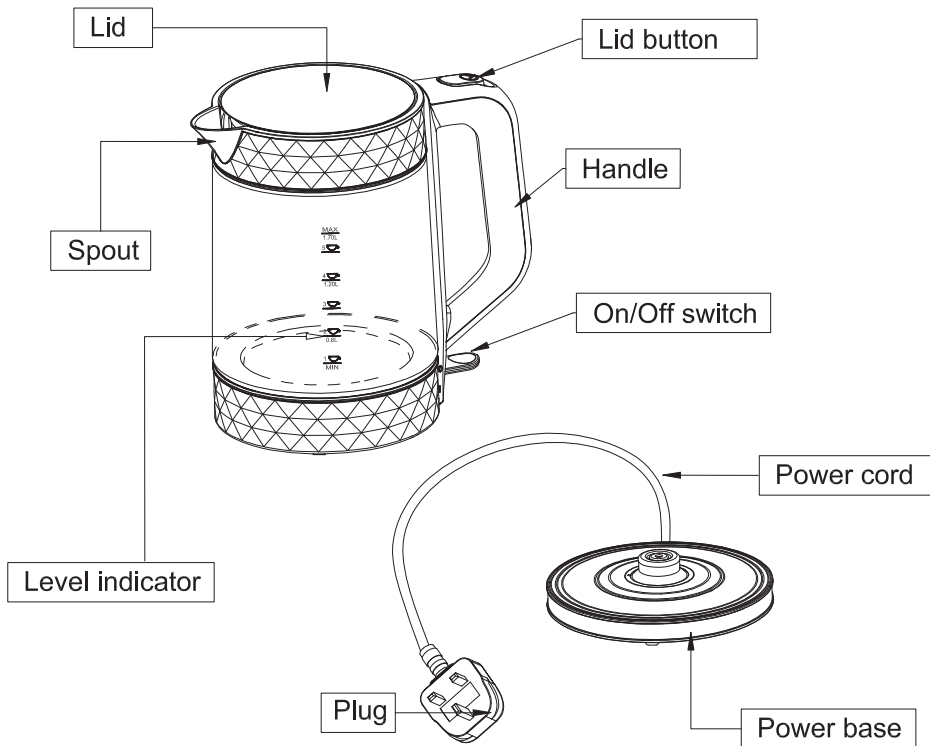
# You should have

Glass kettle & power base



# How to...

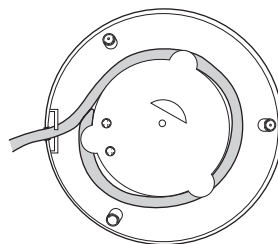
...recognise the parts of your kettle



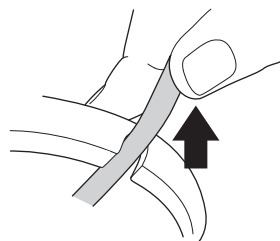
# How to...

...plug the power base in

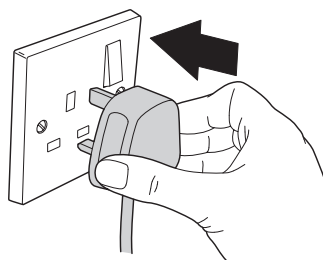
1. Unwind the power cable to your desired length.



2. Fit the power cable firmly into the base slot, so it's stable.



3. Pop the plug into an electrical socket and turn the power on.



# How to...

...use your glass kettle

## Please note

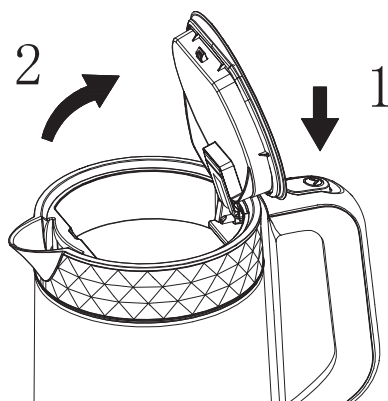
If you're using the kettle for the first time, we recommend cleaning before use by boiling and discarding a full kettle of water twice. Then simply wipe the surface down with a damp cloth.

If you accidentally boil the kettle when it's empty, the kettle will switch off automatically. If this happens, allow the kettle to cool before filling it with cold water and re-boiling. You can shut off the power whilst the kettle is boiling by pushing the on/off switch up.

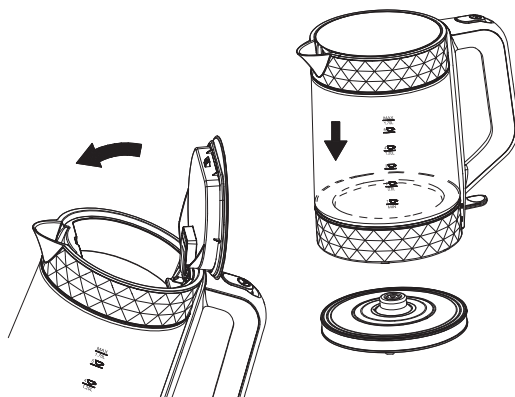
1. Push the button on the top of the handle inwards (1) and the lid will pop open (2).

Fill the kettle with water to your desired level, ensuring you don't exceed the MAX level marker.

Fill the kettle to at least the 1 cup/MIN marker.



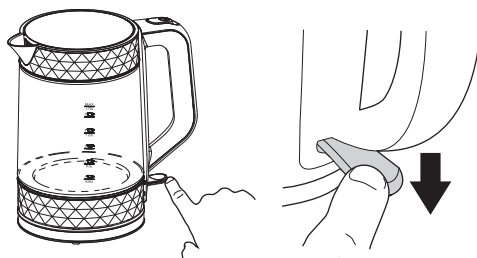
2. Push the lid closed firmly and place the kettle onto the base, making sure it is seated correctly.





3. Push the switch on the back of the kettle down to boil. The light around the bottom of the kettle will illuminate to let you know boiling has begun.

The kettle will automatically switch off once the water has boiled.



## How to...

### ...de-scale your glass kettle

Your kettle should be de-scaled regularly, depending on how often you use it and how hard your water is. Excessive scale can cause the kettle to switch off before boiling and may damage the elements, affecting your warranty.

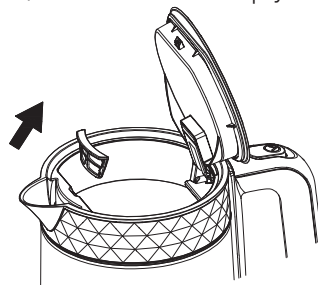
To de-scale, simply purchase an all-purpose de-scaling product suitable for your kettle and follow the instructions on the pack. Ensure the electrical connections are completely dry before using the kettle.

## How to...

### ...clean the filter

Make sure the device is disconnected from the power outlet, and the kettle is empty and completely cool.

1. To clean the filter, remove it by carefully pulling the tab upwards.
2. Wash in warm, soapy water and rinse thoroughly.
3. Refit the filter and ensure it clicks back into place.



# How to...

...clean the kettle

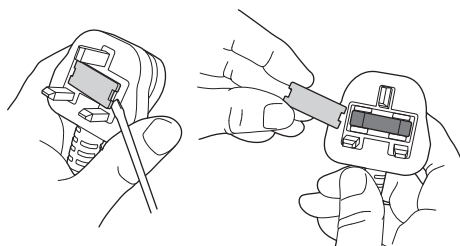
Make sure the device is disconnected from the power outlet, and the kettle is empty and completely cool.

To clean the kettle body, simply wipe with a damp cloth (do not use abrasive cleaners).

# How to...

...change the fuse

1. Only use a 13 amp fuse.
2. To change the fuse, place a screwdriver into the recess of the plug cover and pull the fuse holder upward until it's free.
3. Slide the fuse out and pop in the replacement.
4. Slot the fuse holder back into the recess and push down until it locks into place.





If for any reason you're not completely satisfied with our product, return it within 100 days with your proof of purchase, and we'll give you an exchange or a refund.

UK Mainland stores only.

Excludes franchises.

The guarantee excludes flat pack furniture, which can't be returned if it has been partly or fully assembled unless faulty or mis-described.

Also excludes mattresses, which can't be returned for hygiene reasons once used, unless faulty or mis-described.



### Customer services information

If you have any problems, need more information or spare parts, or even just some advice on your product, then don't hesitate to contact customer services at the telephone number or address shown opposite. N.B. When calling or writing please have your product site code handy.

### Call

**0800 952 0101**

### Write

ASDA, Leeds LS11 5AD

Product name: **GGTKB-22 Glass kettle**

Product site code: **15A.09.22.235**



To qualify for the 2 year warranty the appliance must have been used according to the manufacturer's instructions. For example kettles should have been regularly de-scaled.

If your appliance stops working or develops a fault then return it to your nearest store and we will happily replace or refund the item, with exception of the below exclusions:

#### EXCLUSIONS

ASDA shall not be liable to replace goods under the terms of the warranty where:

1. The fault has been caused or is attributable to accidental use, misuse, negligent use or use contrary to the user manual's recommendations or where the fault has been caused by power surges or damage caused in transit.
2. The appliance has been used on a voltage supply other than that described on the product rating label.
3. Repairs have been attempted by persons other than our service staff (or authorised dealer).
4. Where the appliance has been used for hire purposes or non-domestic use.
5. ASDA are not liable to carry out any type of servicing work, under the warranty.

This warranty does not confer any rights other than those expressly set out above and does not cover any claims for consequential loss or damage. This warranty is offered as an additional benefit and does not affect your statutory rights as a consumer.

If for any reason this item is replaced during the 2 year warranty period, the warranty on the new item will be calculated from original purchase date. It is vital to retain your original proof of purchase to indicate the date of initial purchase.

## Copyright

© 2022 ASDA Stores Limited.  
All other trademarks appearing herein are the property of their representative owners.  
Specifications are subject to change without notice.

**Manufactured for:**  
ASDA, Leeds LS11 5AD/ASDA, Antrim BT41 4GY

## Disposal

This symbol on the product or in the instructions means that your electrical and electronic equipment should be disposed at the end of its life separately from your household waste. There are separate collection systems for recycling in the UK.

For more information, please contact the local authority or your retailer where you purchased the product.

