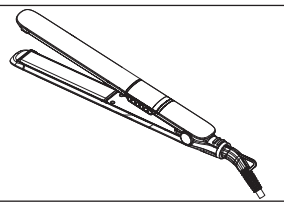


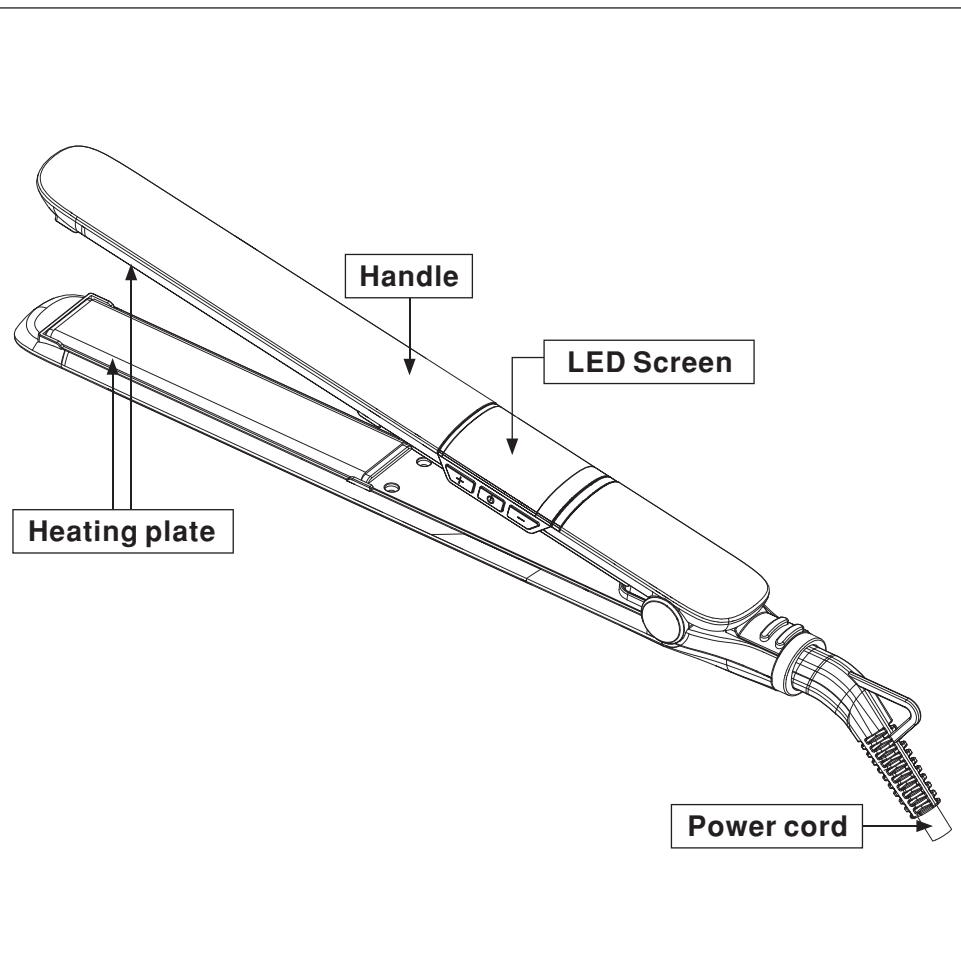
## You should have

Hair straightener



## How to...

...recognise the parts of your hair straightener



If for any reason you're not completely satisfied with our product, return it within 100 days with your proof of purchase, and we'll give you an exchange or a refund. UK Mainland stores only. Excludes franchises. The guarantee excludes flat pack furniture, which can't be returned if it has been partly or fully assembled unless faulty or mis-described. Also excludes mattresses, which can't be returned for hygiene reasons once used, unless faulty or mis-described.

## Need something else?

[www.GEORGE.com](http://www.GEORGE.com)

We have a wide range of accessories and other products that can be ordered direct to your door.



### Customer services information

If you have any problems, need more information or spare parts, or even just some advice on your product, then don't hesitate to contact customer services at the telephone number or address shown opposite. N.B. When calling or writing please have your product site code handy.

### Call

0800 952 0101

### Write

ASDA, Leeds LS11 5AD

Product name: GHL DSTB4F LED STRAIGHTENER

Product site code: 15B.09.24.139

### Copyright

© 2015 ASDA Stores Limited. All other trademarks appearing herein are the property of their representative owners. Specifications are subject to change without notice.

Manufactured for:  
ASDA, Leeds LS11 5AD/ASDA,  
Antrim BT41 4GY

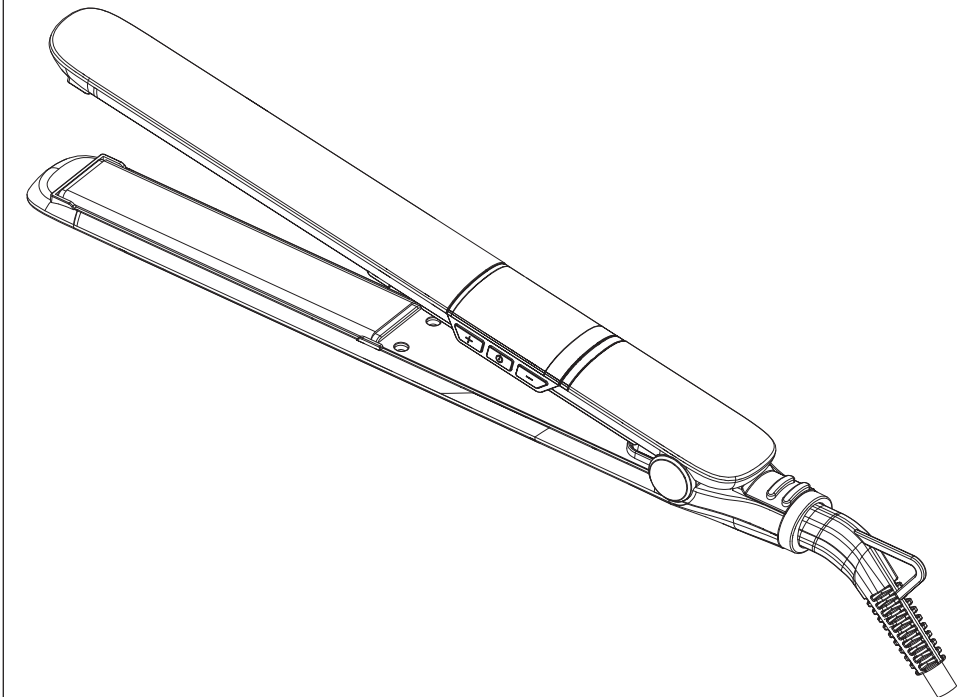
### Disposal

This symbol on the product or in the instructions means that your electrical and electronic equipment should be disposed at the end of its life separately from your household waste. There are separate collection systems for recycling in the EU.

For more information, please contact the local authority or your retailer where you purchased the product.



# George.



## GHL DSTB4F LED STRAIGHTENER

User Guide

100-240V~50-60Hz 48-54W

**IMPORTANT: RETAIN FOR FUTURE REFERENCE**

## About this guide

We're here to help you get the most from your hair straightener, so please keep hold of this manual for future use.

### WARNINGS:

THIS PRODUCT WAS DESIGNED AND MANUFACTURED TO MEET STRICT QUALITY AND SAFETY STANDARDS. THERE ARE, HOWEVER, SOME OPERATIONAL PRECAUTIONS YOU SHOULD BE AWARE OF.

1. Read all warnings & instructions in this manual to ensure you get the best out of your product.
2. Keep the hair straightener away from heat sources or direct sunlight.
3. Do not use if the hair straightener or cord are damaged. If the supplied cord is damaged, it must be replaced by the manufacturer or its service agent or a similarly qualified person in order to avoid a hazard.
4. **WARNING:** Keep the appliance dry.
5. **WARNING:** Do not use this appliance near bathtubs, showers, basins or other vessels containing water. When the straightener is used in a bathroom, unplug it after use since the proximity of water presents a hazard even when the hair straightener is switched off.
6. If the hair straightener falls into water, unplug it immediately. Do not reach into the water.
7. When on, the heated plates get hot. Take care to avoid contact with skin, particularly the face or neck, and never place on heat-sensitive surfaces.
8. The hair straightener should never be left unattended when plugged in.
9. Do not wrap the cord around the straightener heated plates or handle when storing as this can damage the power cord.
10. Please don't dismantle. If a fault occurs have the straightener inspected in a qualified repair shop or return to us at Asda.
11. Children should not play with the hair straightener. Keep this appliance and its cord out of reach of children.
12. Though not recommended by us, this appliance can be used by children aged eight years and above or people with

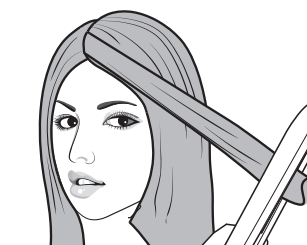
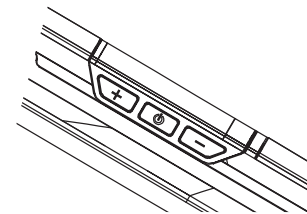
reduced physical, sensory or mental capabilities, providing they have been given supervision or instruction regarding the use of the appliance in a safe manner and understand the hazards involved. Cleaning and user maintenance shall not be made by children without supervision.

13. Environmental information: If at anytime in the future you should need to dispose of this product please note that in the UK, waste electrical products/batteries should not be disposed of with household waste.

## How to...

...use your hair straightener

1. Before using, ensure your hair is completely dry. You'll need to brush your hair to separate the strands and get rid of any little tangles.
2. Slot the plug into the wall socket and switch the power on.
3. Slide the power switch to ON and the power indication light will illuminate to show the straightener is heating up.
4. Leave the straightener to heat for around 30-40 seconds while you divide your hair into equal sections using a comb.
5. Take one section (no more than 4-5cm wide) and place the hair between the hot plates, as close to your scalp as you can get it (make sure they don't touch your scalp though, as this will burn!).
6. Press the handles of the hair straightener together and slide down the length of your hair. Make sure your hair isn't between the straightener for more than five seconds at a time to avoid damage or burning.



7. You can repeat the process after the hair has cooled down (about 20 seconds), until you have the desired finish. For best results, don't brush your hair until it's completely cooled.
8. When you've finished with the straightener, turn it off by sliding the power switch to OFF.
9. Allow the straightener to cool off on a heat-resistant surface and then store in a safe place.

## How to...

...maintain your hair straightener

1. Never lubricate the straightener.
2. Always keep the straightener and vents clean and dust free.
3. When cleaning ensure the straightener is unplugged and cool – then simply wipe the plates with a damp cloth or a sponge with mild soap. Never immerse in water to clean.
4. Wipe dry with a cloth.
5. Try not to twist or pull the power cord, or store the straightener with the cord wrapped around it.
6. Store in a cool, dry place, out of reach of children.

## How to...

...change the fuse

1. Only use a 3amp fuse.
2. Undo the screw in the middle of the plug with a screwdriver.
3. Slide the fuse out and pop in the replacement.
4. Slot the cover back into place and tighten the screw.

### Technical specification

Voltage: 100-240V.  
Frequency: 50-60Hz.  
Power: 48-54W.