

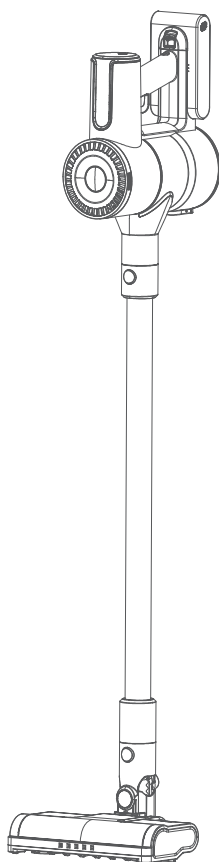
Goblin[®]

GOCLSVN100BL4C

Cordless stick vacuum

User Guide

140W, 25.9V



IMPORTANT: RETAIN FOR FUTURE REFERENCE

About this guide

We're here to help you get the most from your cordless stick vacuum, so please keep hold of this manual for future use.

WARNINGS:

THIS PRODUCT WAS DESIGNED AND MANUFACTURED TO MEET STRICT QUALITY AND SAFETY STANDARDS. THERE ARE, HOWEVER, SOME OPERATIONAL PRECAUTIONS YOU SHOULD BE AWARE OF.

1. Read all warnings & instructions in this manual to ensure you get the best out of your product.
2. Don't use the stick vac for anything other than its intended use. The appliance is not suitable for commercial use. This appliance is only for household domestic indoor use and car cleaning.
3. Do not use if the stick vac or charger are damaged.
4. If the charger is damaged, it must be replaced by the manufacturer, its service agent or similarly qualified persons in order to avoid hazard.
5. Remove all packaging prior to use. Inspect the product for any damage before use. If damage is found, notify ASDA to exchange the product.
6. Before connecting the stick vac charger to the power, check the voltage shown on the charger corresponds with the voltage in your home. If it doesn't, contact your local store.
7. Please don't dismantle. If a fault occur, please contact the technical helpline or return to us at ASDA.
8. Keep the stick vac away from heat sources or direct sunlight.
9. **WARNING:** Keep the appliance dry.
10. To avoid electric shock or injury, never immerse the stick vac or charger in liquid or water.
11. Do not handle the charger or appliance with wet hands.
12. Keep away from harsh or abrasive cleaning agents or solvents.
13. Ensure you assemble the stick vac fully before use.
14. Do not use attachments, spare parts or accessories not recommended by the manufacturer.

15. Always disconnect the appliance from the charger and ensure it is switched off before assembling, disassembling or cleaning.
16. This appliance can be used by children aged from 8 years and above and persons with reduced physical, sensory or mental capabilities or lack of experience and knowledge if they have been given supervision or instruction concerning use of the appliance in a safe way and understand the hazards involved. Children shall not play with the appliance.
17. ASDA does not recommend allowing children to operate this appliance.
18. Cleaning and user maintenance shall not be made by children without supervision.
19. Only carry the stick vac by the carry handle.
20. DO NOT use the stick vac if it has been dropped, damaged, left outdoors or dropped into water.
21. Ensure fingers and objects are never placed in any part of the stick vac. Clothing or hair may become trapped in the vacuum if used improperly.
22. Keep hair, loose clothing, jewellery, fingers, feet and all parts of your body away from openings and moving parts.
23. Keep all air vents clear and free of dust, lint, hair and anything else that may reduce air flow.
24. Avoid directing the stick vac near naked flames as the air discharged may extinguish gas fires and pilot lights or disturb ashes in an open fire.
25. DO NOT use the stick vac to suck up large objects or objects that are likely to damage the appliance.
26. DO NOT attempt to vacuum long hair, string, pieces of cloth etc., as these may clog the appliance.
27. DO NOT vacuum hot items e.g. cigarettes, matches, ashes.
28. DO NOT vacuum fine dust, such as brick dust, plaster dust etc. This may damage the appliance.
29. DO NOT vacuum hard or metal objects, nails, pins etc.
30. DO NOT pick up toxic or flammable materials or use in the presence of explosive or toxic dust, liquids or vapour.
31. DO NOT put objects into openings.

32. Use only on dry indoor surfaces.
33. Never use to suck up water or liquids.
34. DO NOT use without all the filters in place or with any filter blocked.
35. DO NOT use the stick vac to clean animals.
36. Switch the stick vac off when charging and attaching or removing accessories.
37. Take extra care when vacuuming stairs.
38. Keep any attachments away from your face and body.
39. This stick vac has a thermal safety device which cuts off the power when overheated. If this happens, turn off the stick vac and allow it to cool down completely before reusing.
40. Use only the charger supplied to charge the appliance.
41. Do not charge the unit outdoors, in a bathroom or anywhere the appliance may get wet.
42. The appliance shall not be left unattended while it is connected to the supply mains.
43. Don't wrap the cord around the charger when storing.
44. Environmental information: If at anytime in the future you should need to dispose of this product, please note that, in the UK, waste electrical products/batteries should not be disposed of with household waste.
45. The battery must be removed from the appliance before it is scrapped.
46. The appliance must be disconnected from the supply mains when removing the battery. The battery is to be disposed of safely.
47. The appliance contains batteries that are non replaceable.

WARNING: For the purpose of recharging the battery, use the detachable supply unit provided with this appliance.

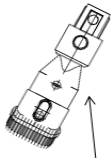
AUTOMATIC THERMAL CUT OUT

A safety thermostat inside the stick vac protects motor from overheating if the airways or filters clogged. If the appliance suddenly stops working operation, switch off immediately. Allow the motor cool for an hour, empty the bin and clean the airways thoroughly. Switch on the stick vac again. The stick vac should operate normally.

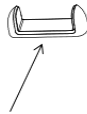
What's in the box

- Stick vac main body
- Dust cup
- Extension pole
- Floor head
- HEPA filter
- 2 in1 crevice nozzle
- Stabiliser support
- Charger
- User guide

Features



2 in 1 crevice nozzle



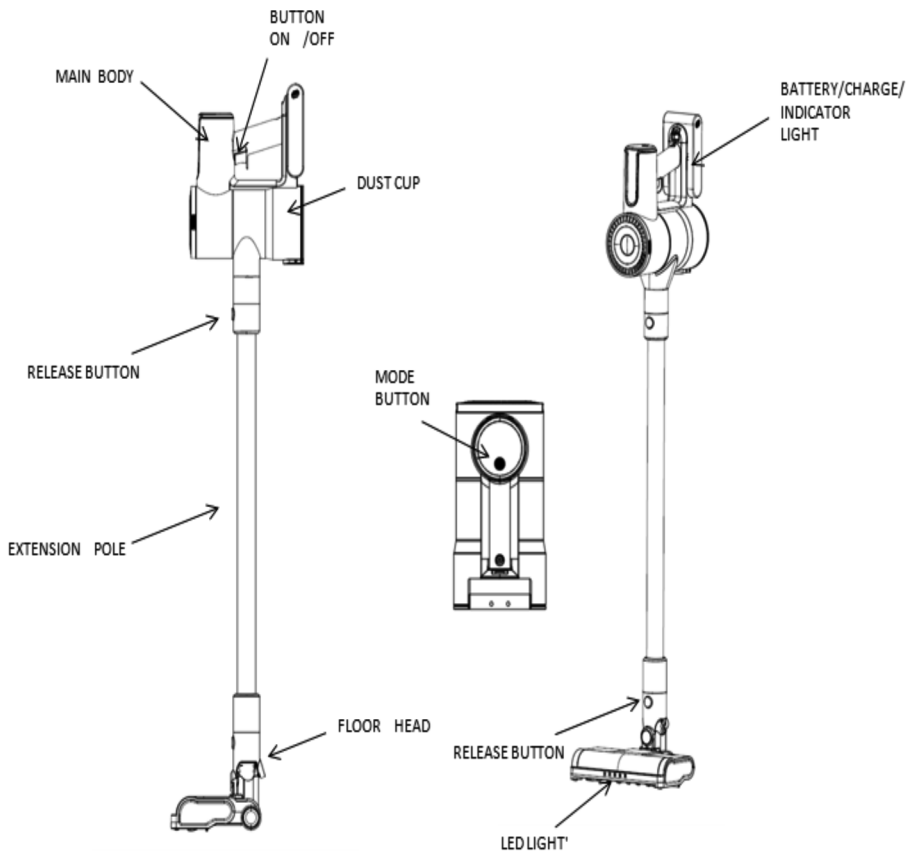
Stabiliser support



Charge

Model NO: ZD012M300055BS
30V \equiv \diamond \leftarrow \diamond 0.55A

Features



Charging the stick vac

Before use we recommend that the stick vac is charged fully. When first purchased there will be some charge so it may not take the full amount of time to fully charge.

1. Plug the end of the charger into the charger connection point located on the top of the stick vac main body. It is recommended that the stick vac is charged without any attachments connected and the appliance is laid on a flat surface.

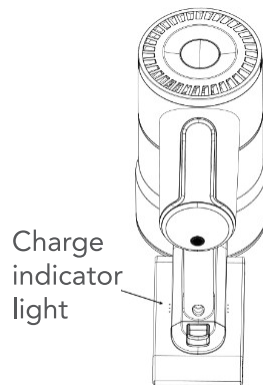
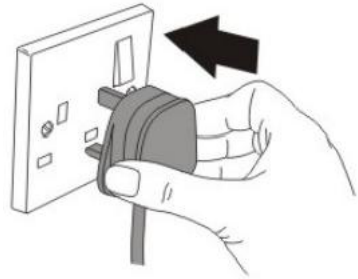
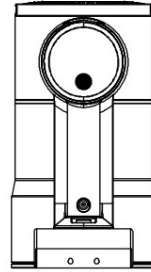
2. Plug the charger into the mains.

3. The charge indicator light will flash on and off to show the appliance is charging

4. Once fully charged, the charge indicator light will stop flashing and all lights will be lit.

5. Turn off from the mains power and remove the charger.

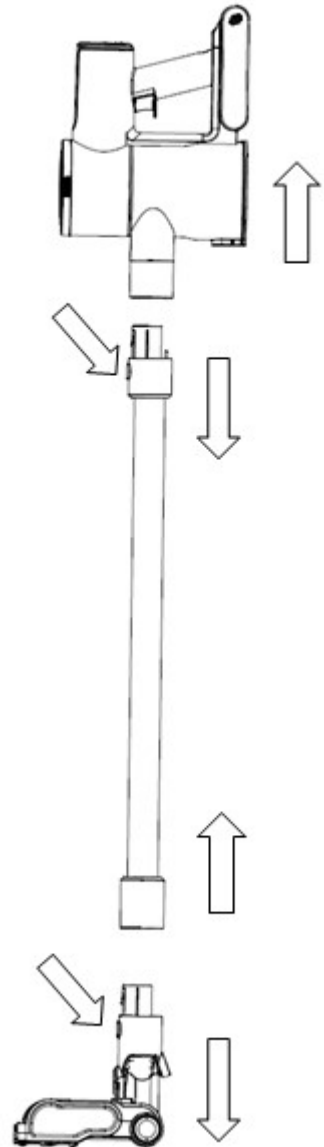
Note: Do not leave the stick vac unattended or leave overnight when charging. The appliance will not work whilst charging.



Assembling and disassembling the stick vac

Before assembling or disassembling attachments, ensure the stick vac has finished charging and is not connected to the mains power.

1. Align the extension pole with the top of the floor brush and push down until it clicks into place.
2. Align the main body with the top of the extension pole and push down until it clicks into place. The stick vac is now fully assembled and ready to use.
3. To disassemble the main body from the extension pole, simply push the release button on the extension pole and pull away.
4. To remove the floor brush from the extension pole, push the release button on the floor brush down and pull the extension pole away.



Using the stick vac

Ensure the stick vac is fully charged and assembled before using.

Always take care when vacuuming stairs.

1. There are two power settings on the stick vac: max mode (this has a higher suction power but a shorter running time, approx 16 mins) and eco mode (lower suction power with a longer running time, approx 45 mins) The stick vac will always start in eco mode. The run time may vary depending on the surface being cleaned.

2. For the 'eco' mode simply press the on/off button, while for 'max' mode press the on/off button followed by the mode button. Press mode button again to back to 'eco' mode. When required, press the on/off button again to turn off the stick vac.

3. Move the floor brush back and forth over the surface. Use even strokes. Don't press hard; allow the stick vac to suck away the debris. There are lights on the floor head which will illuminate automatically when the stick vac is in operation to help with visibility in dark corners/areas.

4. The stick vac has charge indicator lights, these are the three small lights in both side (in total six) on the battery.

Whilst charging -all lights will flash in turn

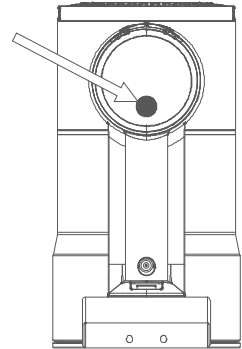
one third charged -the upper light will be on, other two flash in turn

two third charged -upper two lights will be on, the other light flashes

Fully charged -all lights will be on When in use and the battery is almost gone, the upper indicator light will flash. After approximately 30 seconds the stick vac will automatically switch off.

5. It is advisable to empty the dust cup after each use.

For best performance, check the filters are clean (see the 'Removing and cleaning the dust cup and filters' section of this manual).



Changing the attachments

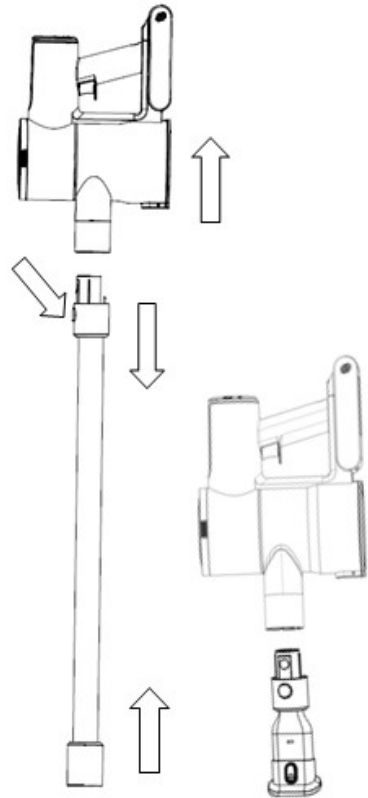
When changing the attachments ensure the stick vac is switched off. The 2in1 crevice nozzle can fit directly onto the main body for cleaning.

1. Remove the floor brush from the extension pole by pushing down on the release button and pulling the extension pole away from the floor brush.

2. Slide the crevice onto the end of the main body until it clicks into place. The attachment is now ready to use.

3. The crevice tool can be used for edges and corners, slide down the brush for dusting.

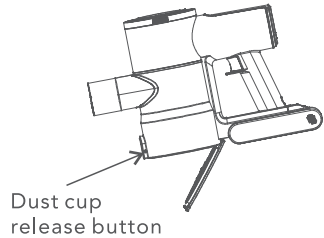
To retract the 2in1 crevice nozzle the tool backwards. press the button again and slide the tool backwards.



Emptying the dust cup

Ensure the stick vac is switched off and any attachments are removed before emptying the dust cup.

1. Push the dust cup release button on the base of the cup.
2. Open the dust cup base to release the dust.
3. Once empty, close the dust cup base.



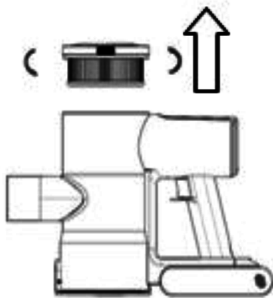
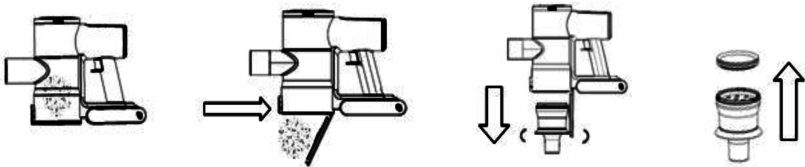
Cleaning the dust cup and filters

Before starting any cleaning, ensure the stick vac is not charging and is switched off. It is easier to remove the dust cup without any attachments on the stick vac.

1. Press the dust cup release button located on the bottom of the cup.

2. The dust cup houses the HEPA filter and filter assembly. Remove them from the dust cup then remove any more excess dust from the filter assembly using a soft brush or a clean paint brush. Rinse the dust cup, filter assembly parts and HEPA filter under warm water until the water runs clear and leave to dry for 24 hours.
3. Once all the parts are thoroughly dry, reassemble the filter following below directions.

Note: Do not allow the dust cup to overfill. Don't exceed the MAX level marker. Empty regularly. It is important to regularly maintain and clean the filters. A clogged filter reduces suction power and can shorten the life of your stick vac.



Below is a recommended guide for how often you should clean the filters:

Filter type	Recommended cleaning times
Filter assembly	<ul style="list-style-type: none">· Shake out debris when you empty the dust cup. Use the dusting brush to gently remove any dust build-up· Rinse under warm water once a month or more often if required.
HEPA filter	<ul style="list-style-type: none">· Occasionally remove any dust/debris as necessary The filter can also be rinsed under warm water once a month.

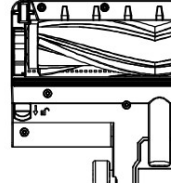
Removing and cleaning the floor head and roller brush

Before starting any cleaning, ensure the stick vac is not charging and is switched off and remove the floor head from the rest of the stick vac.

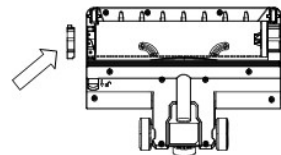
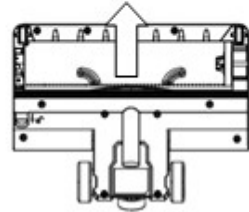
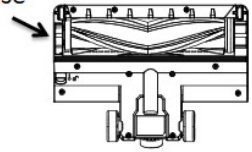
If the roller brush becomes tangled in use, the brush will stop rotating and the lights on the floorhead will turn off.

If that happens, follow the below steps

1. Push the catch on the brush release cover, and lift it out.
2. Lift out the brush and remove any hair or obstructions, check each end of the brush.
3. Place the brush roll back in, aligning the end with the drive pin first, and slotting the hexagonal end into place. Rotate the hexagonal end if needed to ensure it slots fully into place, and the brush is straight in the housing.
4. Place the brush release cover into place; insert the front end first and push down to clip closed.



Brush release cover



Clearing a blockage

Ensure the stick vac is not plugged into the mains supply and is switched off before dismantling the vac.

The stick vac would only become blocked if the dust cup has exceeded the 'Max' level, the filters are clogged up or a large object has been sucked up.

1. Check the dust cup and empty if necessary.
2. Check the filter in the unit, remove any debris/dust and wash if necessary,
3. If the floor brush, or crevice tool are in use, detach them from the main body or extension pole and check for blockages. Remove any blockages.
4. Detach the extension pole and look down it to see if there are any blockages. If there are, use the handle of a broom to clear the obstruction. Take care not to damage the pole in the process.
5. Check the roller brush for any hair or thread which may have become wrapped around the roller. Cut away with a pair of scissors. To do this safely, remove as shown in the 'Removing and cleaning' the floor head roller brush' section of this manual.

Storing the cordless stick vac

Your stick vac can be stored safely and securely by the stabiliser support supplied with your product or by removing all the attachments and stowing together in a cupboard. Either way will help avoid the product falling over and causing damage.

Always turn off and unplug from the mains supply before storing.

1. Remove any attachments if the stick vac was last used with them on.
2. Store the stick vac and accessories away safely in a dry place.

Storing the cordless stick vac with the stabiliser support

1. Find a suitable spot in your household where you'd like to secure your stick vac.
2. Attach the battery, extension pole and floor head onto the main body.
3. Attach the stabiliser support on the battery position.
4. Remove the adhesive tape on the back of the stabiliser support. Attach it onto the wall.
5. The stabiliser can hold the stick vac in upright position, but not hanging the stick vac.

Troubleshooting

Problem	What to do
The stick vac is not cleaning well	<ol style="list-style-type: none">1. Empty the dust cup2. Remove excess dust from the filters3. Wash the filters4. Check for blockages
The stick vac has stopped or won't work.	<ol style="list-style-type: none">1. Charge the vac (check the mains socket works and the switch is turned on)2. It might be blocked - check items 1 to 4 above3. The thermal cut out activated. Switch off the vac and leave the motor to cool for an hour then try using again

Troubleshooting continued

Problem	What to do
The lights on the floor head turn off	<ol style="list-style-type: none"><li data-bbox="482 261 1042 405">1. The floor head is blocked, refer to the Removing and cleaning the floor head and roller brush' section of this manual.<li data-bbox="482 405 1042 676">2. The roller brush motor has become overheated due to heavy loading. This might be due to extended use on a long pile carpet or loose rug. Leave the vac to cool for an hour then use the eco mode rather than the max mode

Notes

Goblin®

Your
28 day
no quibble refund

If you're not delighted with your product, simply bring it back within 28 days for a no quibble refund. Don't forget to include all of the product's original components (for example remote control, power cable or stand) and packaging, along with your receipt or other proof of purchase.

1 year
guarantee

This product is covered by a full 1 year Asda guarantee from the day you buy it. In the unlikely event that your product is faulty or you are simply struggling to set it up, don't worry - here's what you should do.

1. First call our Customer Helpline as they may be able to help you with the problem
2. If the problem can't be resolved, you will receive a reference number.
3. Take the reference number, along with the item, all its components and your receipt, to your nearest store for a full refund

Customer services information

If you have any problems, or just need some advice or more information on your product, then don't hesitate to contact customer services at the telephone number or address shown opposite. N.B. When calling or writing please have your product site code handy.

Call

0333 600 7700

Write

ASDA, Leeds LS11 5AD

Product name: **GOCLSVN100BL4C**
Cordless stick vacuum

Product site code: **15A.06.24.121**

For PDF copy of this manual please scan
QR code and search for model number



ASDA
technical support
0333 600 7700

Copyright

© 2024 ASDA Stores Limited.

All other trademarks appearing herein are the property of their representative owners. Specifications are subject to change without notice.

Manufactured for:

ASDA, Leeds LS11 5AD/
ASDA, Antrim BT41 4GY

Disposal



This symbol on the product or in the instructions means that your electrical and electronic equipment should be disposed at the end of its life separately from your household waste. There are separate collection systems for recycling in the UK.

For more information,
please contact the
local authority or
your retailer where
you purchased
the product.

Goblin[®]