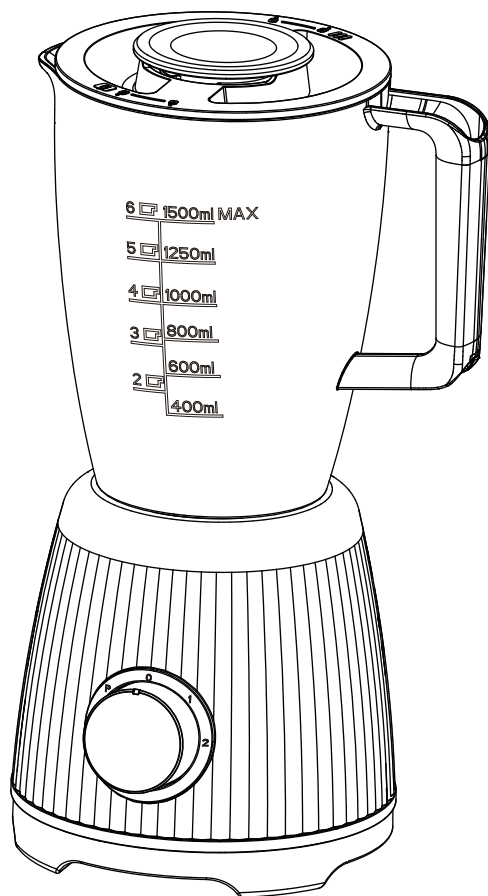


George.
home



GHJBT001B4P Jug Blender

User Guide

220-240V~50/60Hz, 500W

IMPORTANT: RETAIN FOR FUTURE REFERENCE






About this guide

We've written this manual to help you get the most from your jug blender. Please keep hold of it for future reference.

WARNINGS:

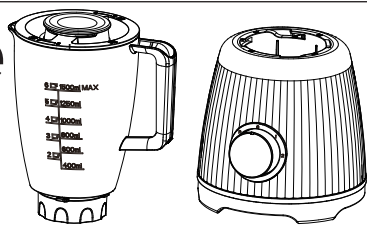
THIS PRODUCT WAS DESIGNED AND MANUFACTURED TO MEET STRICT QUALITY AND SAFETY STANDARDS. THERE ARE, HOWEVER, SOME OPERATION PRECAUTIONS YOU SHOULD BE AWARE OF.

1. Read all warnings & instructions in this manual to ensure you get the best out of your product.
2. Only use this appliance for the intended use. The appliance is not suitable for commercial use. This appliance is only for household and indoor use.
3. This appliance shall not be used by children. Keep the appliance and its cord out of reach of children.
4. This appliance can be used by persons with reduced physical, sensory or mental capabilities or lack of experience and knowledge if they have been given supervision or instruction concerning use of the appliance in a safe way and if they understand the hazards involved.
5. Children shall not play with the appliance.
6. Always disconnect the appliance from the supply if it is left unattended and before assembling, disassembling or cleaning.
7. If the supply cord is damaged, it must be replaced by the manufacturer, its service agent or similarly qualified persons in order to avoid hazard.
8. Before connecting the jug blender to the power, check the voltage shown on the appliance corresponds with the voltage in your home. If it doesn't, contact your local store.
9. Do not use if the appliance, cord or plug is damaged.

- 
- 
- 
10. The cord shouldn't hang over the edge of a table or counter, or touch a hot surface.
 11. Remove all packaging prior to use. Inspect the product for any damage before use. If damage is found, notify ASDA to exchange the product.
 12. Keep away from harsh or abrasive cleaning agents or solvents.
 13. Do not use attachments not recommended by the manufacturer.
 14. Don't use the blender for anything other than its intended use.
 15. Please don't dismantle. If a fault occurs, have the blender inspected in a qualified repair shop or return to us at Asda.
 16. To avoid fire, electric shock, or injury, never immerse the blender, cord, or plug in water or liquid. Do not use with wet hands.
 17. Keep fingers, hair, clothing and utensils away from all moving parts. Only use a scraper when the appliance is not in use.
 18. Never leave unattended when in use.
 19. Switch off the appliance and disconnect from supply before changing accessories or approaching parts that move in use.
 20. Care shall be taken when handling the sharp cutting blades, emptying the bowl and during cleaning.
 21. Never add ingredients when the blender is in use, or before the blades come to a complete stop.
 22. This appliance cannot be used for blending or grinding hard ingredients. If blending dry ingredients a liquid must be added.
 23. Do not use with boiling or hot liquids.
 24. Do not continuously operate for more than 2 minutes at a time as this can overheat the motor. Always allow the motor to cool to room temperature before continuing to use.
 25. Do not operate when the container is empty, as this can cause damage.
 26. Do not exceed the marked maximum capacity of the jug.
 27. Ensure the blender lid is securely fastened before use.

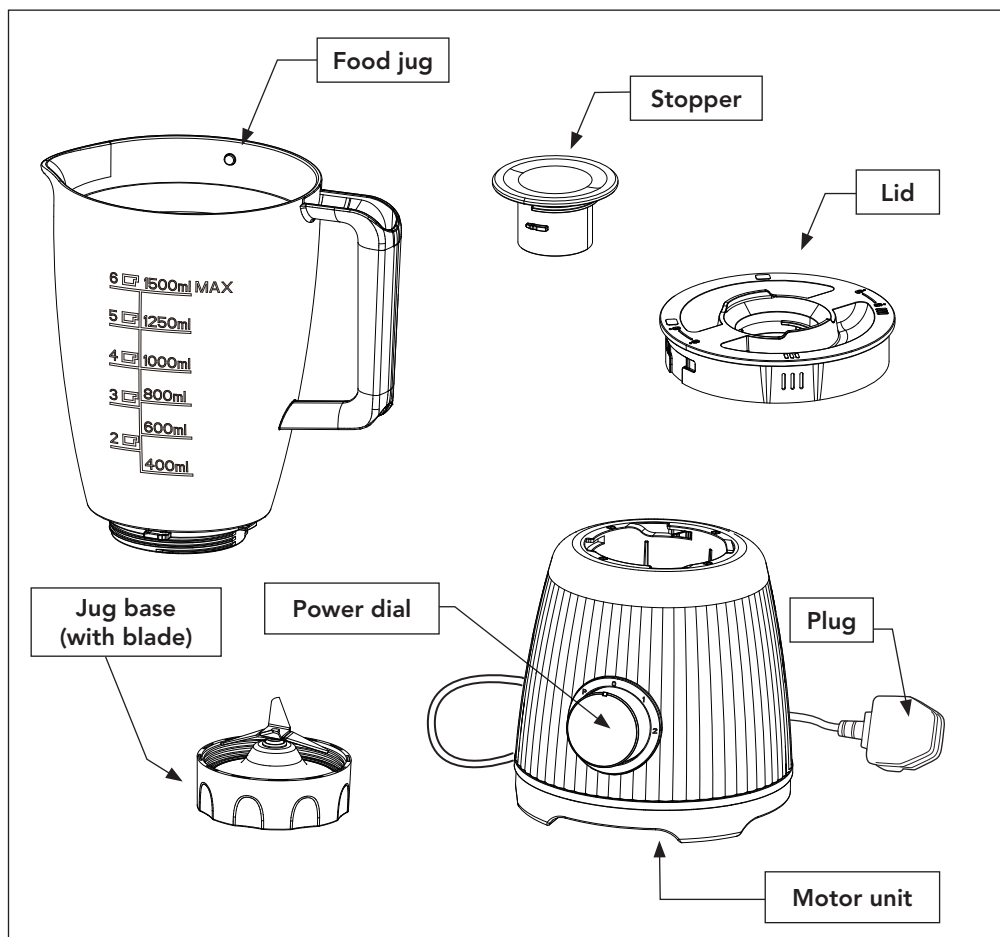
You should have

Motor unit, jug base (with blade), jug, lid & stopper



How to...

...recognise the parts of your personal blender

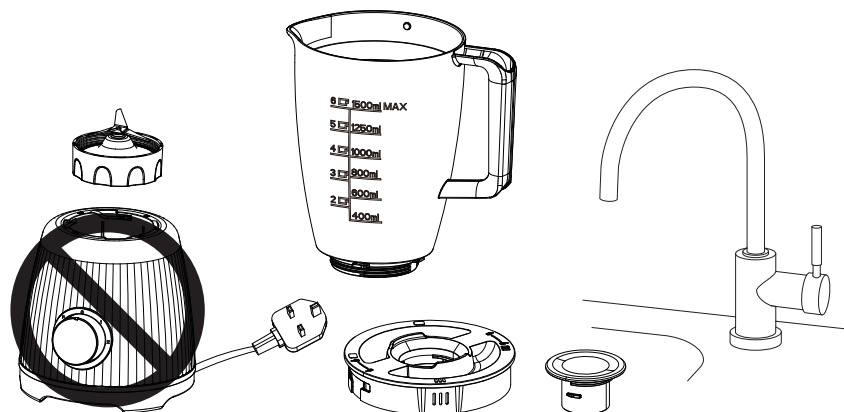


How to...

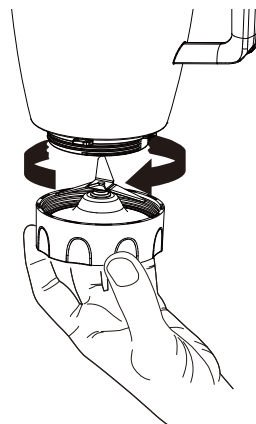
...assemble and use your jug blender

This blender can be used for fluids (e.g. dairy products, sauces, fruit juices, soups, milks, drink and shakes) or soft ingredients (e.g. fruit and protein powders)

1. Before use remove all packaging.
2. Wash the jug base (with blade), jug, stopper and lid in warm, soapy water. Take care whilst handling the blade. It's important not to wash the motor unit as this houses electrical components. Wipe the motor unit with a damp cloth to clean. (Full cleaning instructions are detailed in the section 'How to clean your jug blender.')

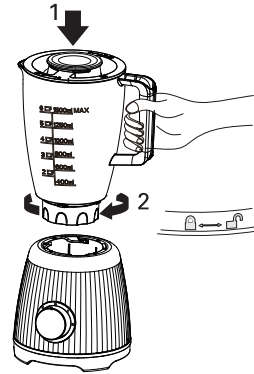


3. Place the motor unit on a flat, level surface.
4. Attach the jug base to the jug by screwing it clockwise until securely in place. Handle the base with care, sharp blades.

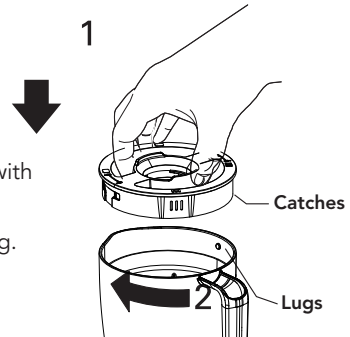




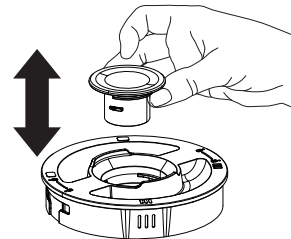
5. Slot the food jug onto the motor unit (1) so that the lugs on the bottom of jug align with the open padlock symbol on the top of the motor unit.
6. Twist the food jug clockwise, towards the locked padlock symbol, until it locks into place (2).



7. Place the food / liquid you wish to blend into the jug. Ensure soft food is cut into small pieces and liquid is added to assist the smooth running of the blender.
8. Place the lid onto the top of the jug, aligning the lugs with the catches (1).
9. Rotate clockwise (2), until it locks into place, for blending.

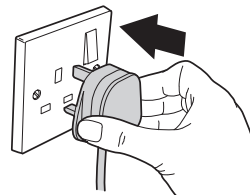


10. Slot the stopper into the hole in the lid. Rotate clockwise until it clicks into place. The stopper can be removed when blending so you can add liquid or small ingredients.



11. Ensure the power dial is set to the 0 – off position and then pop the plug into the power socket

Important: This appliance is fitted with a safety lock system which prevents the blender from being used if it is not assembled correctly.





12. Rotate the power dial to your desired speed:

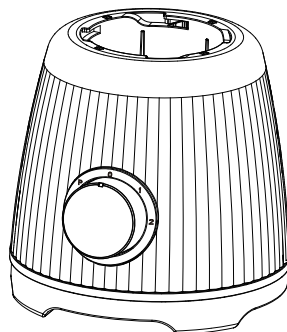
P – PULSE: This will switch to off when released.

0 – OFF: Blades stop spinning.

1 – LOW SPEED: Coarsely blended.

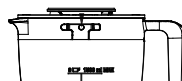
2 – HIGH SPEED: Finely blended.

13. Remember to only blend for 2 minutes at a time and allow the motor to cool to room temperature before continuing. When finished, turn the blender off by turning the speed dial to '0' and remove the plug from the power socket.

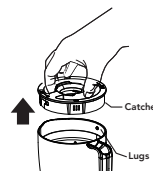


14. Rotate the lid anti-clockwise, until it locks into place, for pouring.

15. Rotate the lid, aligning the lugs in the middle, to unlock.



16. Remove the lid. The jug can be emptied using a spatula. Never place your hands or fingers inside the blender as the blades are sharp and can cause injury.



How to...

...get the best from your jug blender

1. Switch the blender off once you get the right consistency.
2. Never use the blender to crush ice or large pieces of frozen foods, grind bones, or process spices.
3. Switch the blender off at the socket before removing or scraping the inside of the jug.
4. When blending thick mixtures (e.g. pâté and dips), you may need to scrape down the inside of the jug. If the mixture is too difficult to blend, add more liquid.
5. For easiest blending add liquids first, then solids.
6. The blender cannot beat egg whites, whip cream, mash potatoes, grind meats, mix dough or extract juice from fruit and vegetables.

How to...

...clean your jug blender

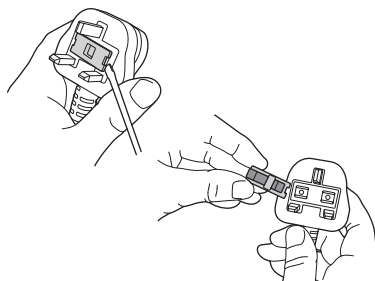
Make sure the jug blender is switched off and disconnected from the power.
Never wash any parts of the blender in the dishwasher.

1. For easy cleaning you can partially fill the jug with warm soapy water and replace the lid and stopper. Then switch on pulse mode to clean the blades and the bottom of the food jug.
2. Remove the jug and rinse with warm running water, then leave upside down on a draining board to dry.
3. The motor unit can only be wiped clean with a damp cloth. Never immerse in water.
4. Ensure all items are dry and the motor unit is cool before storing in a clean, dry place, out of reach of children.

How to...

...change the fuse

1. Only use a 10 amp fuse.
2. To change the fuse, place a screwdriver into the recess of the plug cover and pull the fuse holder upward until it's free.
3. Slide the fuse out and pop in the replacement.
4. Slot the fuse holder back into the recess and push down until it locks into place.



How to...

...solve common problems

Problem	Reason	Solution
You have plugged the blender in, switched the power on, selected a cutting speed, but the blender does not work.	The blender may not be fully locked onto the base. The plug fuse may need replacing.	Check the blender is locked onto the base. Change the fuse in the plug.
The cutting blades are not working normally.	There may be too much food inside the food jug.	Reduce the quantity of food inside the food jug.
The blender stops suddenly whilst in use.	The safety lock on the blender may not be fully engaged.	Check the food jug is correctly locked onto the motor unit.
The blender overflows whilst in use.	There may be too much food inside the food jug. The blender may not be on a stable and level surface.	Reduce the quantity of food inside the food jug. Place the blender on a stable and level surface.



100 DAY SATISFACTION GUARANTEE

If for any reason you're not completely satisfied with our product, return it within 100 days with your proof of purchase, and we'll give you an exchange or a refund.

UK Mainland stores only.
Excludes franchises.

The guarantee excludes flat pack furniture, which can't be returned if it has been partly or fully assembled unless faulty or mis-described.

Also excludes mattresses, which can't be returned for hygiene reasons once used, unless faulty or mis-described.

Need something else?

www.GEORGE.com

We have a wide range of accessories and other products that can be ordered direct to your door.

For PDF copy of this manual please scan QR code and search for model number



ASDA
technical support
0333 600 7700

Customer services information

If you have any problems, need more information or spare parts, or even just some advice on your product, then don't hesitate to contact customer services at the telephone number or address shown opposite. N.B. When calling or writing please have your product site code handy.

Call

0800 952 0101

Write

ASDA, Leeds LS11 5AD

Product name: **GHJBT001B4P Jug blender**

Product site code: **15A.06.24.113**





To qualify for the 2 year warranty the appliance must have been used according to the manufacturer's instructions. For example kettles should have been regularly de-scaled.

If your appliance stops working or develops a fault then return it to your nearest store and we will happily replace or refund the item, with exception of the below exclusions:

EXCLUSIONS

ASDA shall not be liable to replace goods under the terms of the warranty where:

1. The fault has been caused or is attributable to accidental use, misuse, negligent use or use contrary to the user manual's recommendations or where the fault has been caused by power surges or damage caused in transit.
2. The appliance has been used on a voltage supply other than that described on the product rating label.
3. Repairs have been attempted by persons other than our service staff (or authorised dealer).
4. Where the appliance has been used for hire purposes or non-domestic use.
5. ASDA are not liable to carry out any type of servicing work, under the warranty.

This warranty does not confer any rights other than those expressly set out above and does not cover any claims for consequential loss or damage. This warranty is offered as an additional benefit and does not affect your statutory rights as a consumer.

If for any reason this item is replaced during the 2 year warranty period, the warranty on the new item will be calculated from original purchase date. It is vital to retain your original proof of purchase to indicate the date of initial purchase.

Copyright

© 2024 ASDA Stores Limited.

All other trademarks appearing herein are the property of their representative owners. Specifications are subject to change without notice.

Produced for:

ASDA, Leeds LS11 5AD/ ASDA, Antrim BT41 4GY

Disposal

This symbol on the product or in the instructions means that your electrical and electronic equipment should be disposed at the end of its life separately from your household waste. There are separate collection systems for recycling in the UK.

For more information, please contact the local authority or your retailer where you purchased the product.

