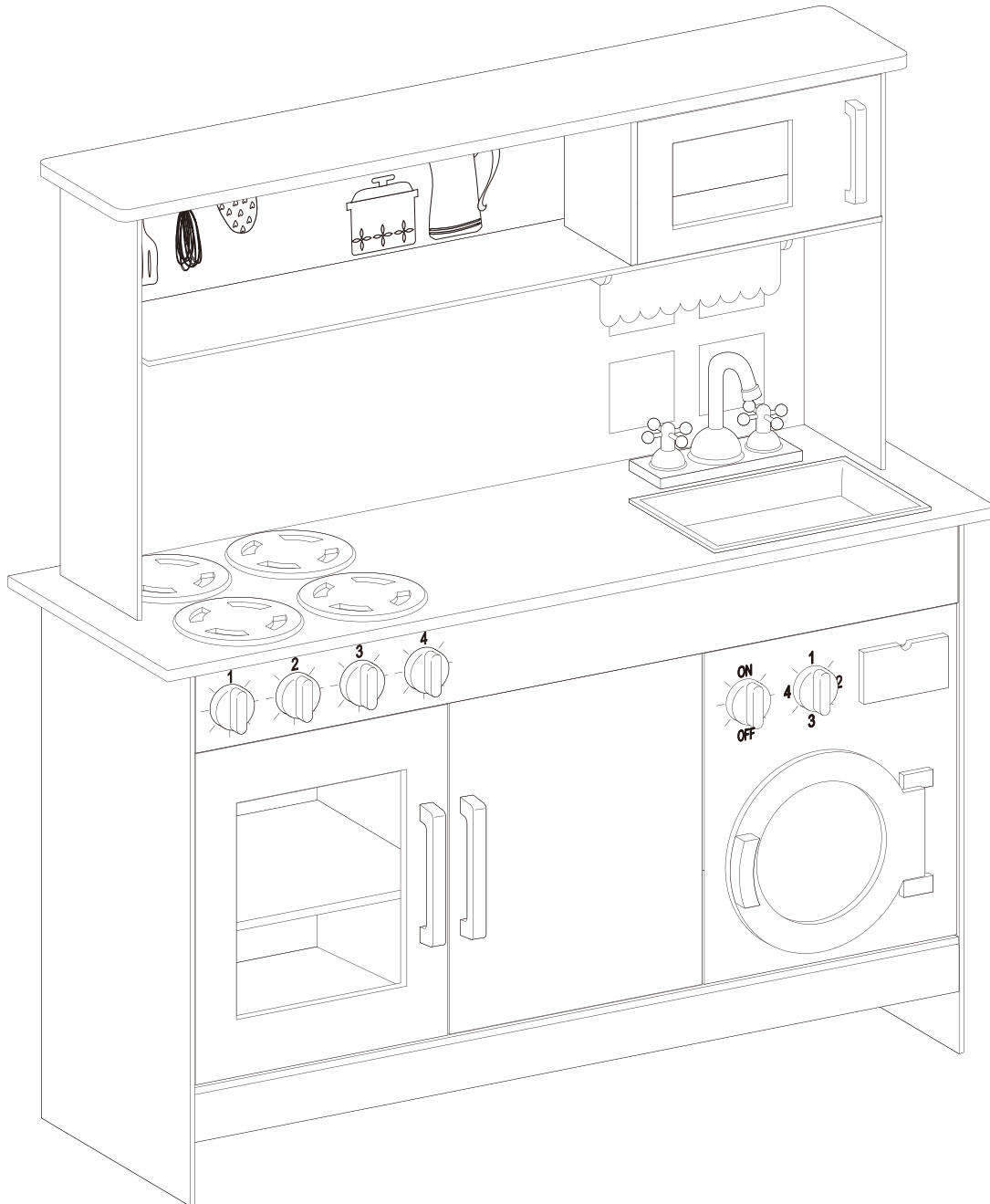




George.  
home



# 39742 Pink Triple Kitchen

3+

Assembly Guide

IMPORTANT: RETAIN FOR FUTURE REFERENCE



## WARNINGS:

### IMPORTANT SAFETY INSTRUCTIONS

**PLEASE READ ALL INSTRUCTIONS CAREFULLY BEFORE USE AND RETAIN FOR FUTURE REFERENCE.**

**Assembly to be carried out by a competent adult only.**

- Use under direct adult supervision.
- The hardware contains small screws with sharp points. Keep unassembled parts out of the reach of small children due to possible risk of injury.
- **WARNING!** Not suitable for children under the age of 3 years. Components of this product may break off into small parts presenting a choking hazard.
- Choking hazard: Unassembled parts may be a choking hazard to children 3 years and younger.
- To avoid the danger of suffocation, keep any bags or packaging away from babies and children. Any packaging or bags are not part of the toy and must be disposed of immediately before assembling the toy.
- Do not allow children to sit, stand, play or climb on the top surface as this may cause the product to become unstable.
- Do not use this item if any components are missing or damaged.

**Your toy is only meant to be assembled once.**

- After you have assembled your toy, do not dismantle it again as this may weaken the joints and screws, leaving the toy unsafe for use.
- Regularly check that all of the screws are fully tightened (but do not over-tighten).
- Use the toy on a flat level surface only.
- Please check the assembly of the toy regularly and frequently tighten any screws or bolts. If regular maintenance is not carried out, the product may cease to function properly.

## Getting started...

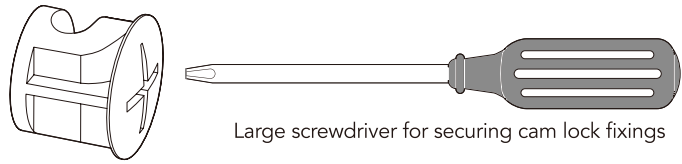
1. Unpack the components and check against the list below.
2. Place the components on a clean surface to prevent them from being damaged.
3. After you have assembled your toy, dispose of all packaging.



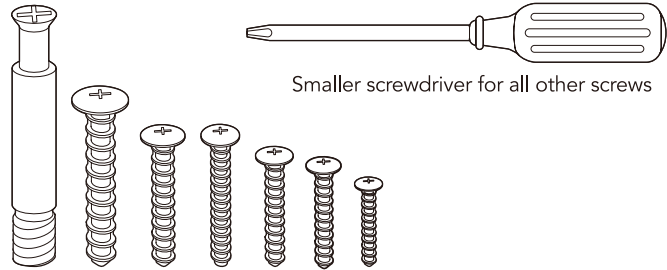
# You will need...

Cross head / Philips screwdriver suitable for use with the screws provided.

**Please note:** We recommend using 2 sizes of cross head / Philips screwdrivers. The cam lock fixings shown require a larger screwdriver head size.



Large screwdriver for securing cam lock fixings

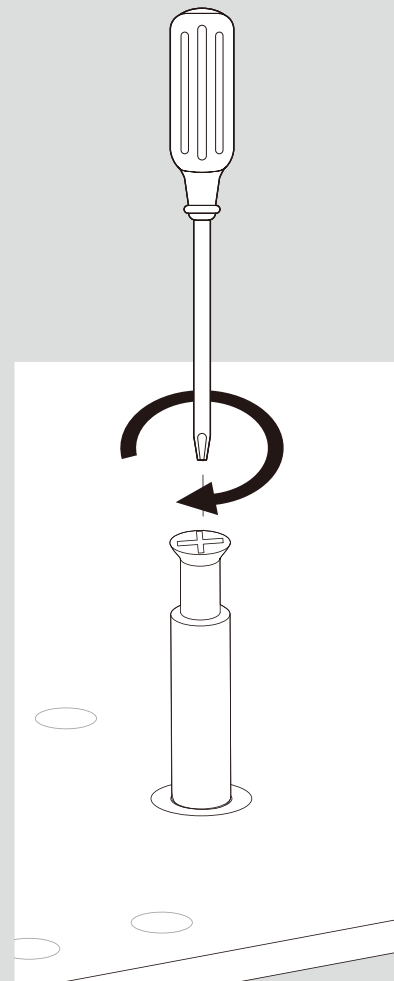


Smaller screwdriver for all other screws

## Please note...

The following information is important regarding the cam lock fixings used for this product.

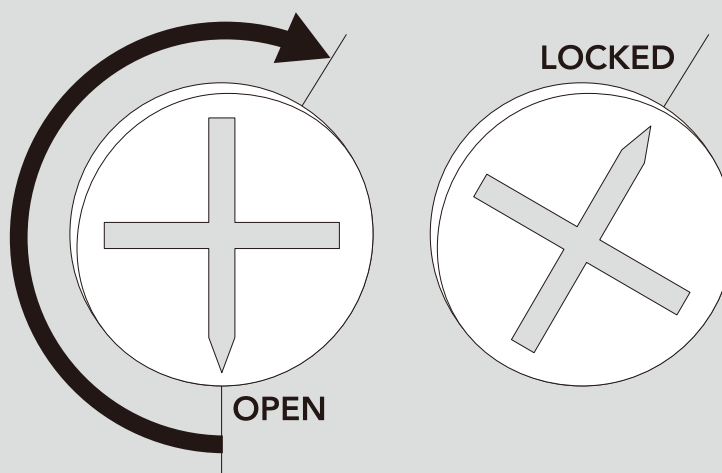
When screwing in the cam bolts, please stop turning as soon as you feel any resistance. These cam bolts **DO NOT** need to be tightened fully.



# Please note...

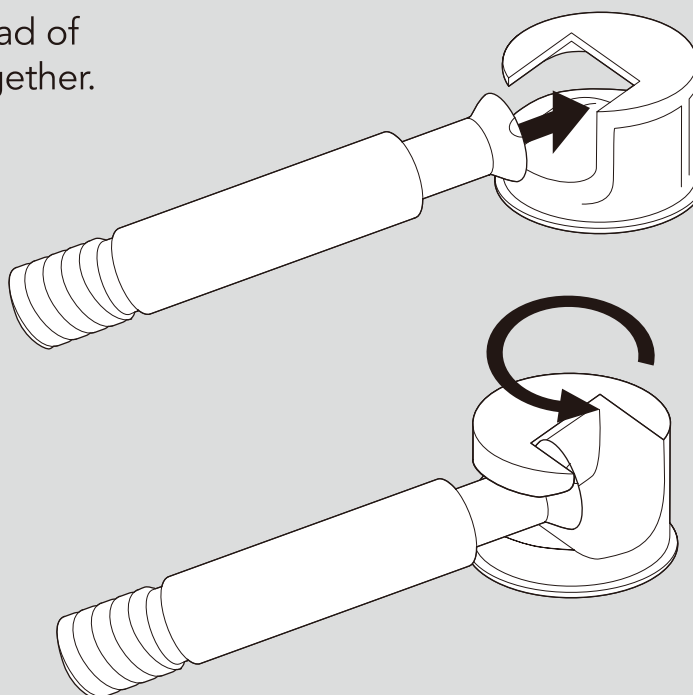
When tightening the cam lock mechanism, please stop turning as soon as you feel any resistance.

The drawings below illustrate that you should tighten by turning just over half a turn. Tightening any further may cause damage to the product.



**These drawings help illustrate how the cam lock fixings work.**

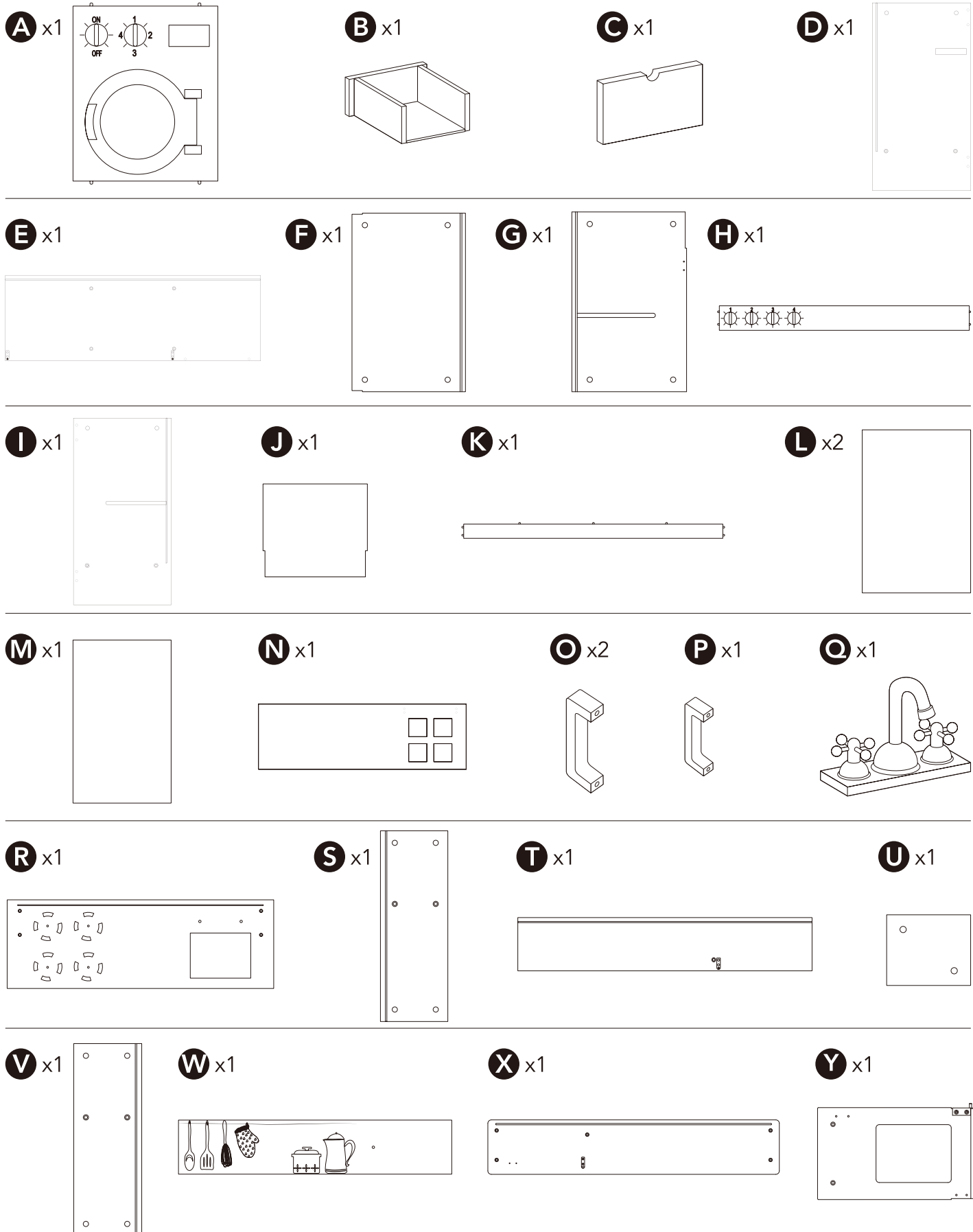
The cam lock clasps around the head of the cam bolt to secure sections together.





# You should have...

## Components

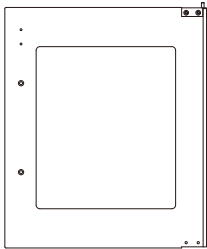




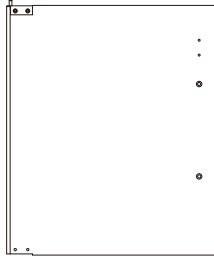
# You should have...

Components (continued)

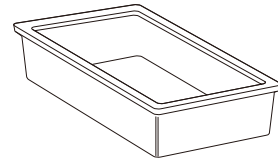
**Z** x1



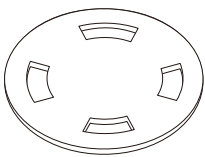
**A1** x1



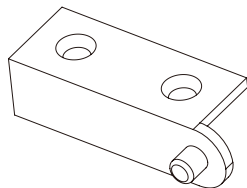
**B1** x1



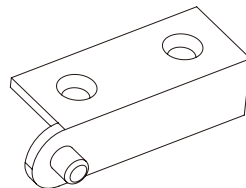
**C1** x4



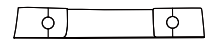
**D1** x2



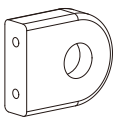
**E1** x1



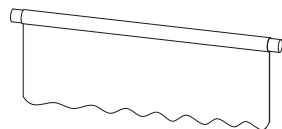
**F1** x1



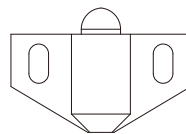
**G1** x2



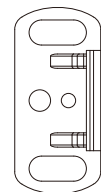
**H1** x1



**I1** x3

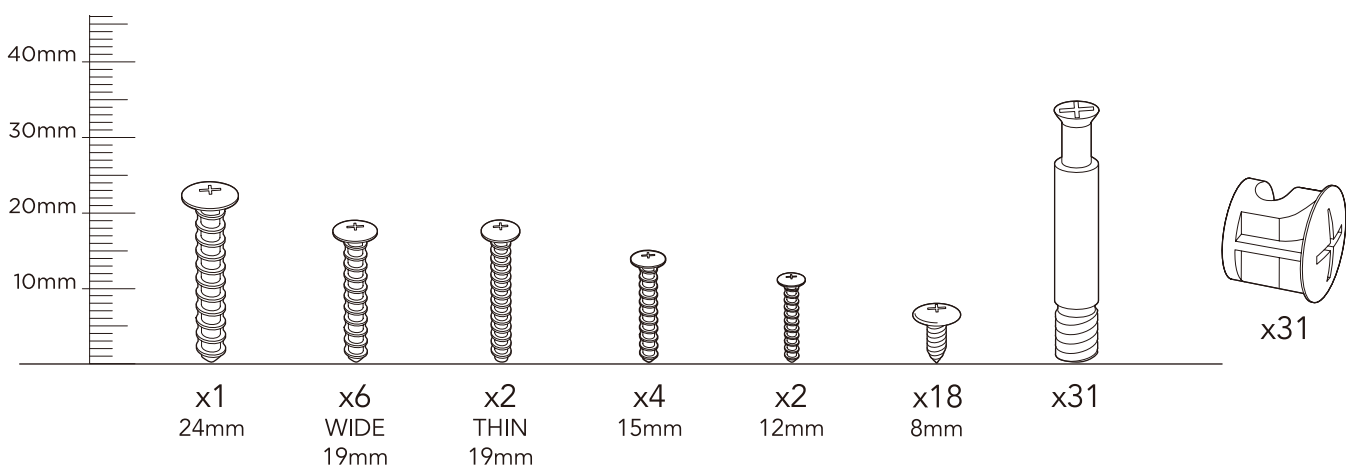


**J1** x3



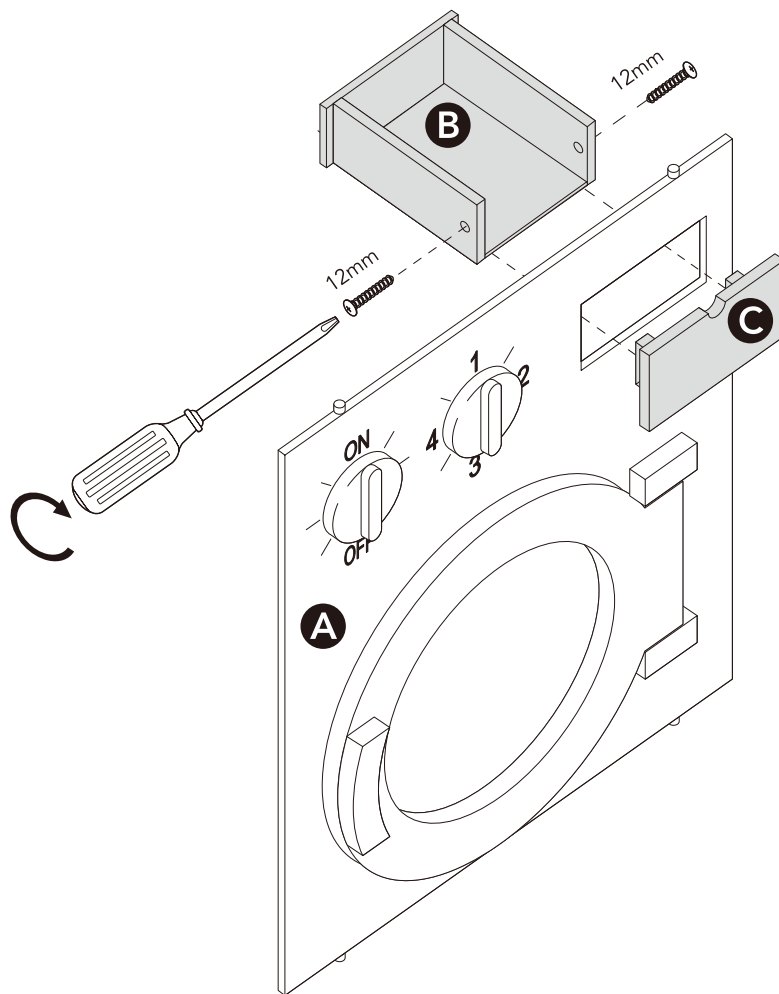
# You should have...

Fixings

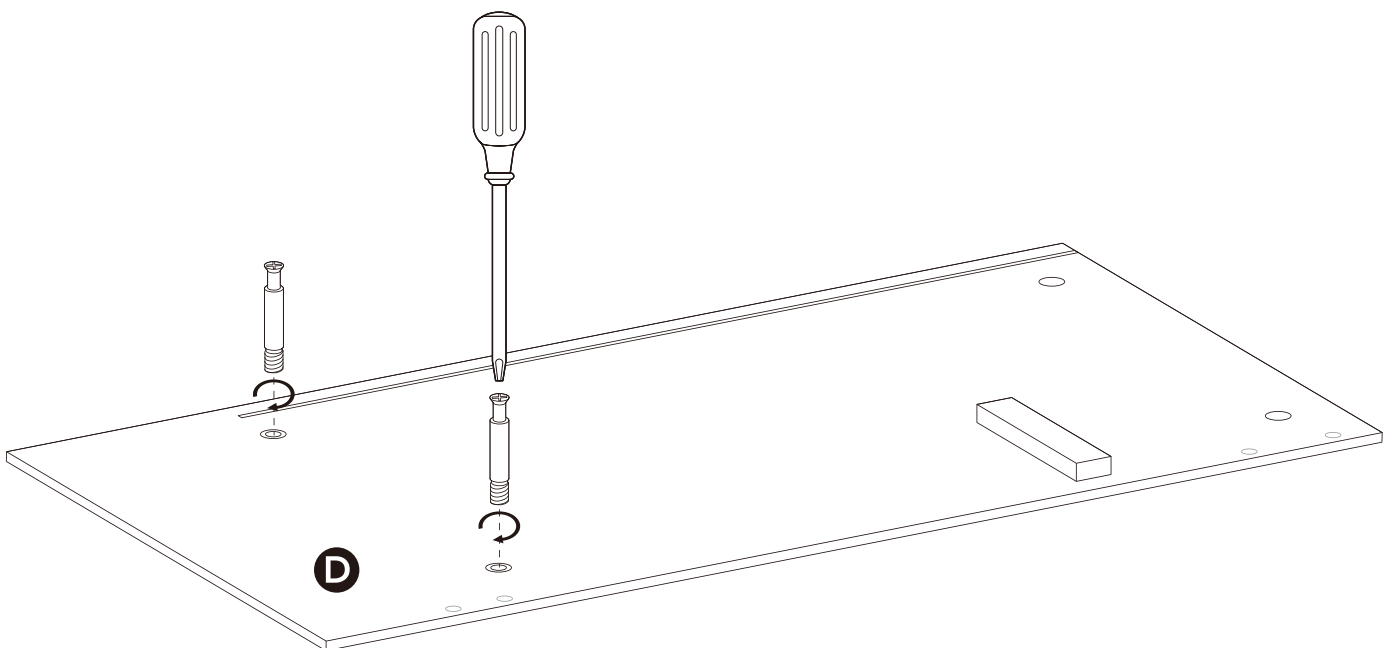




## Step 1

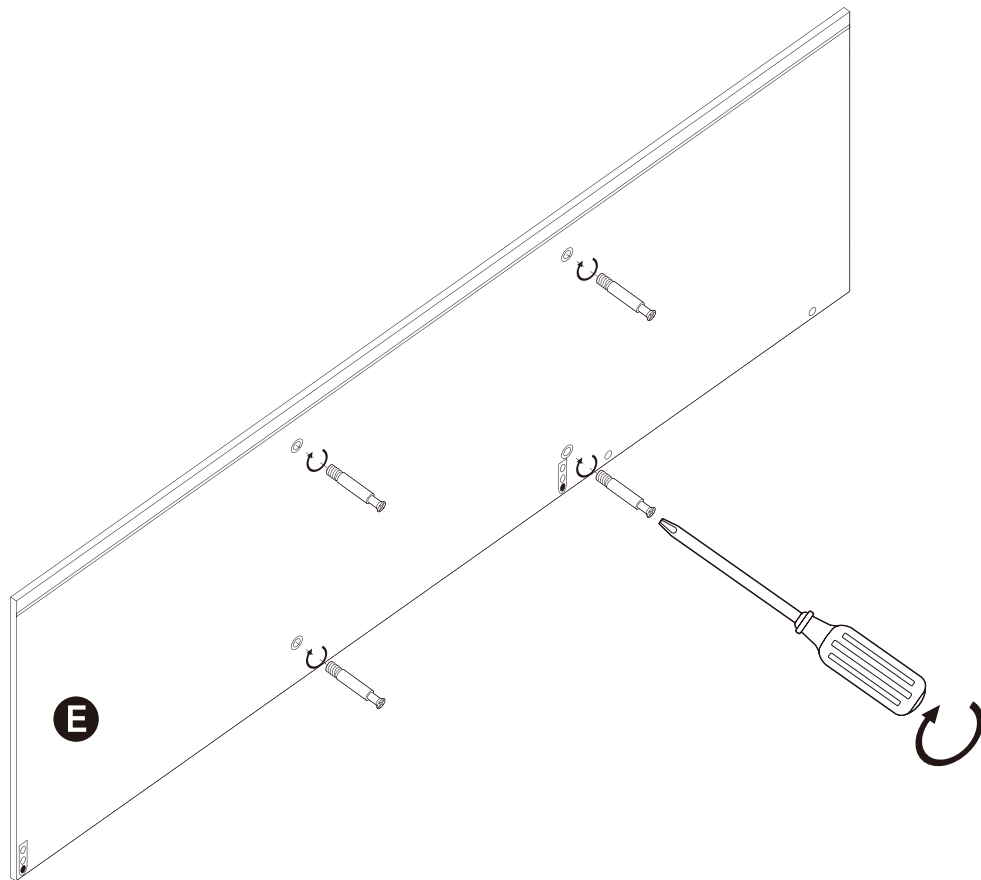


## Step 2

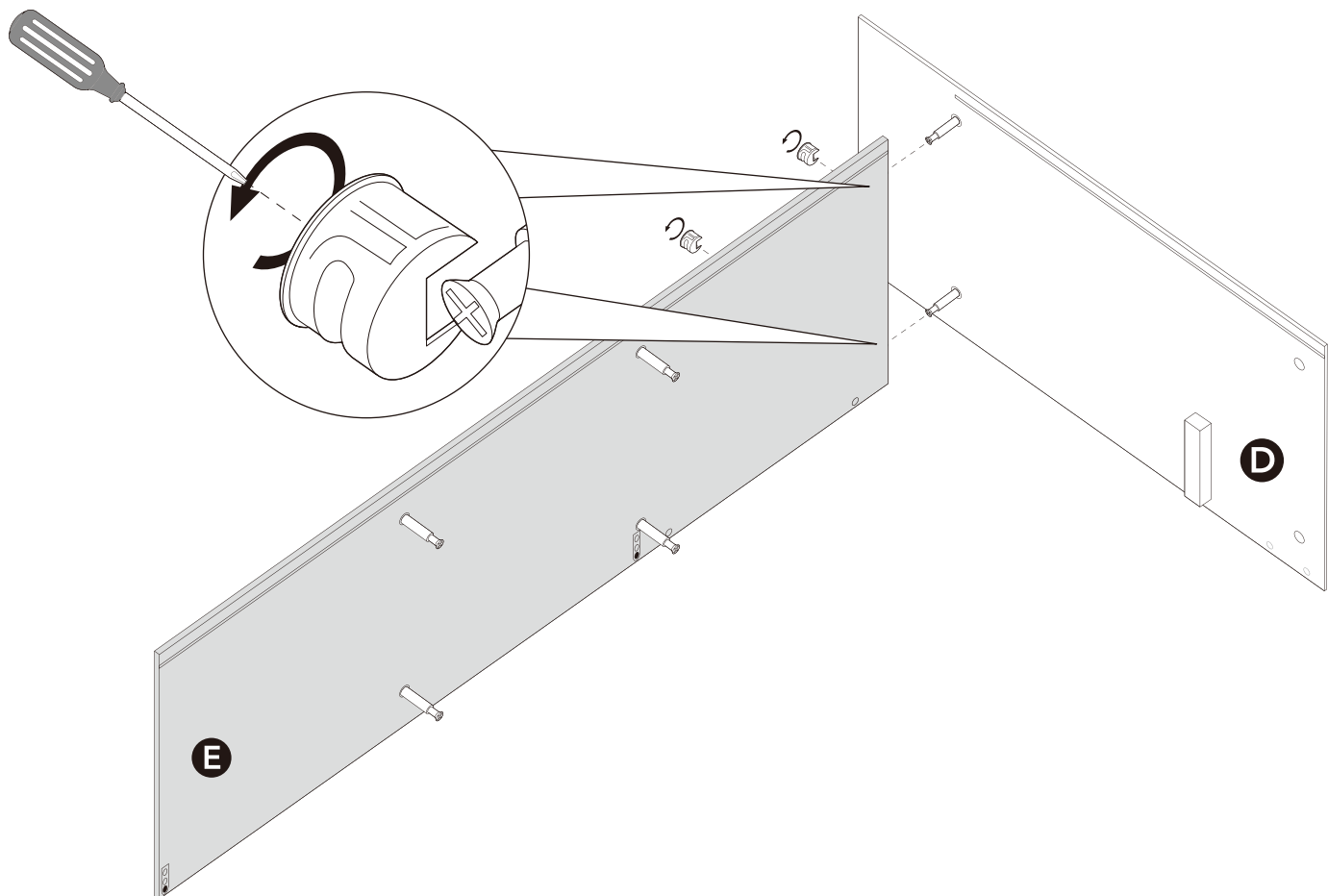




### Step 3



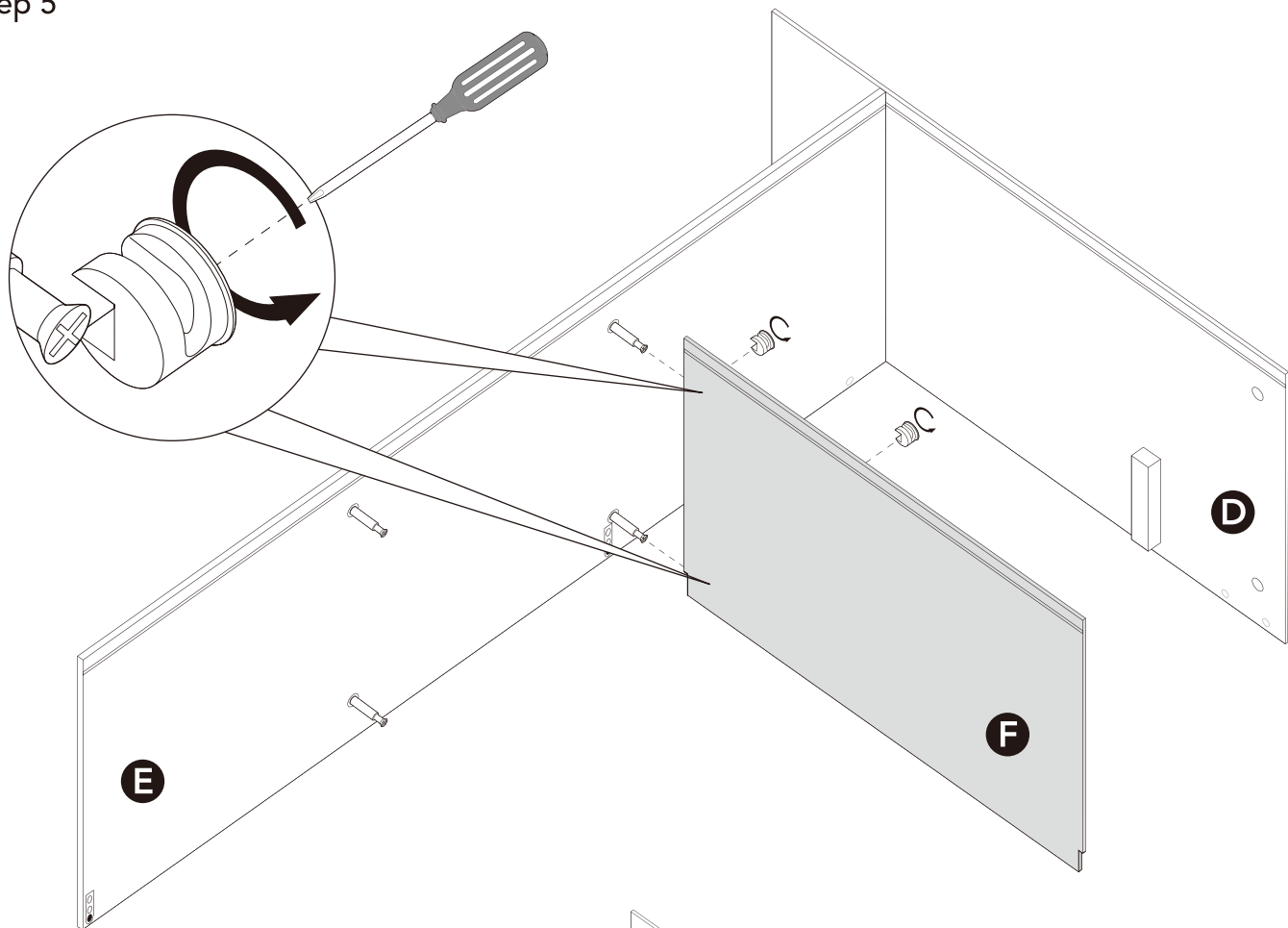
### Step 4



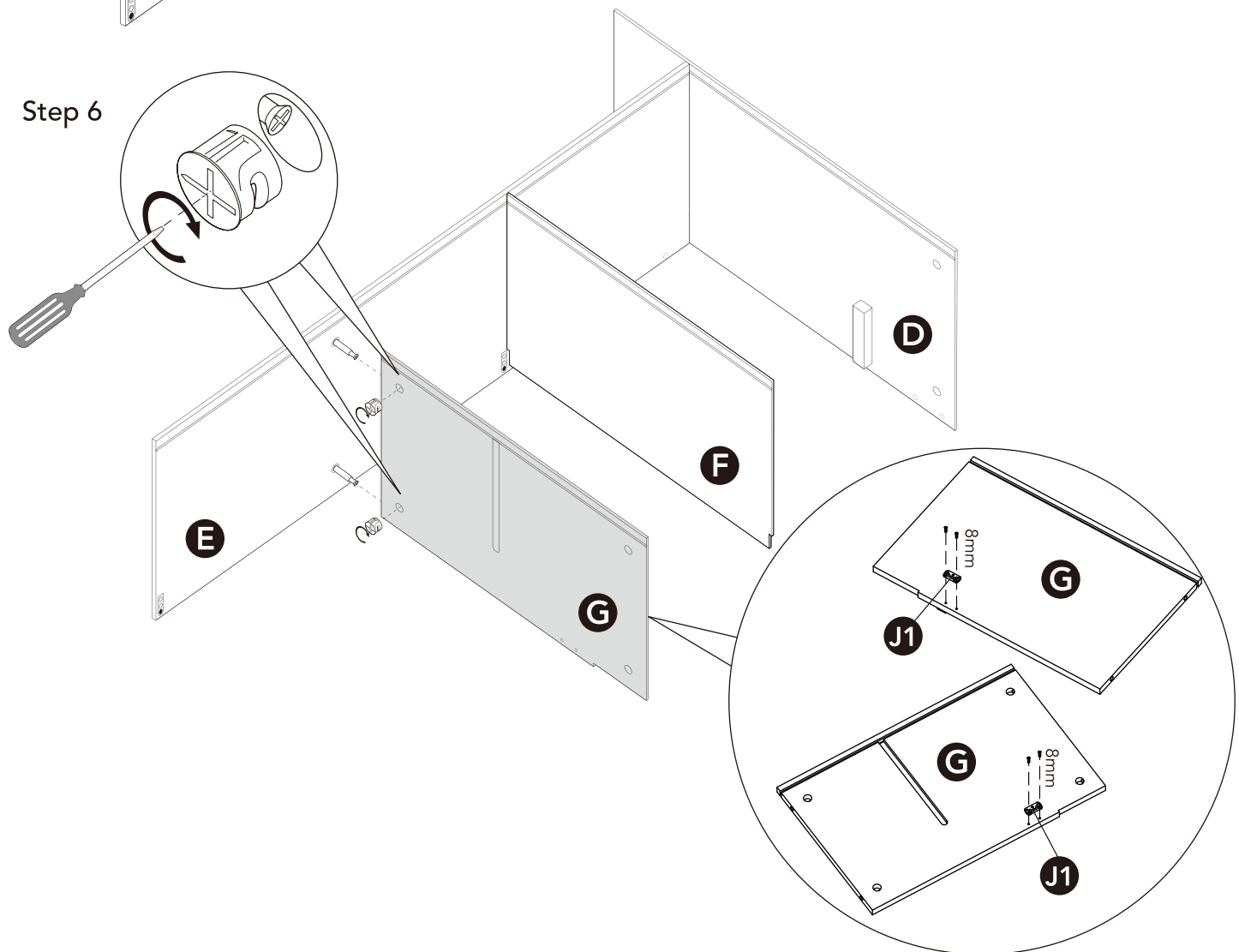




## Step 5

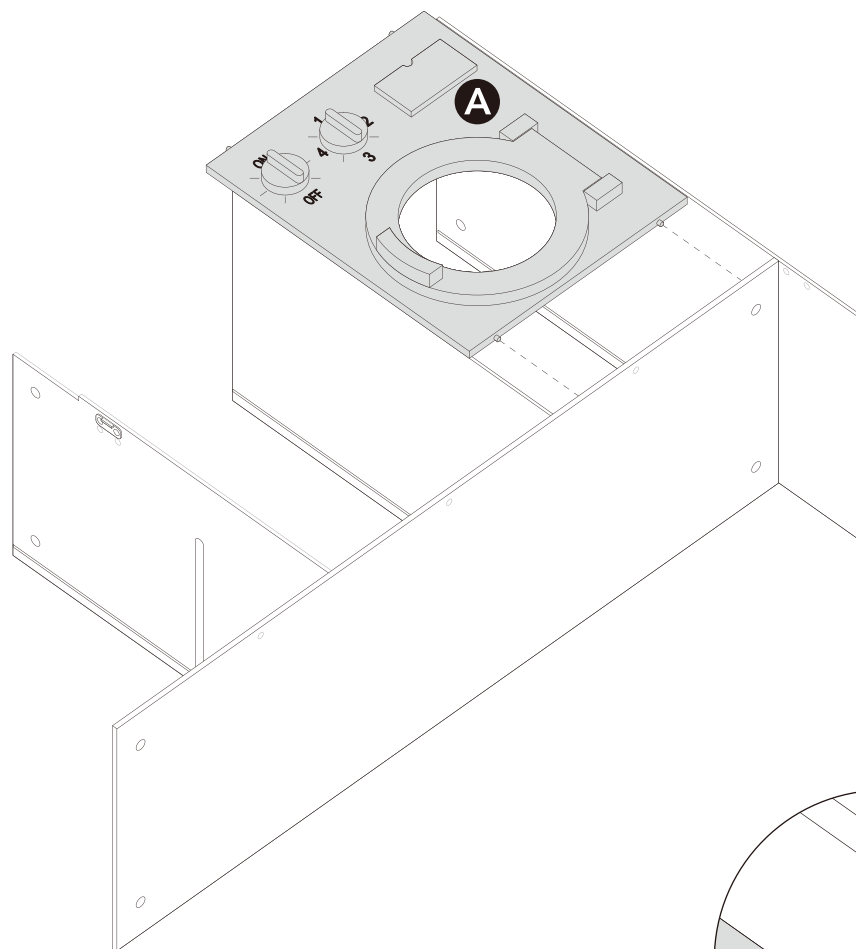


## Step 6

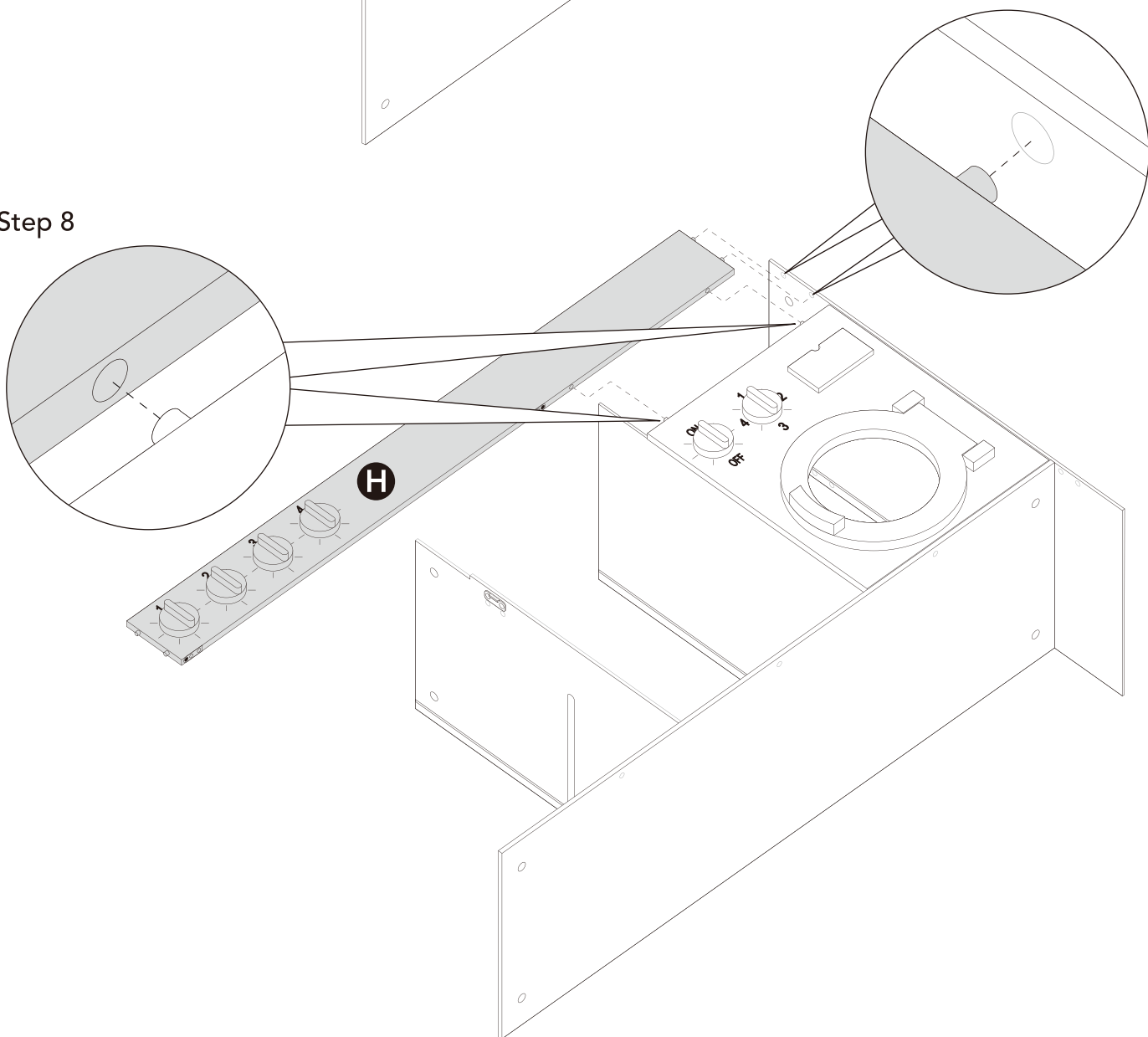




## Step 7

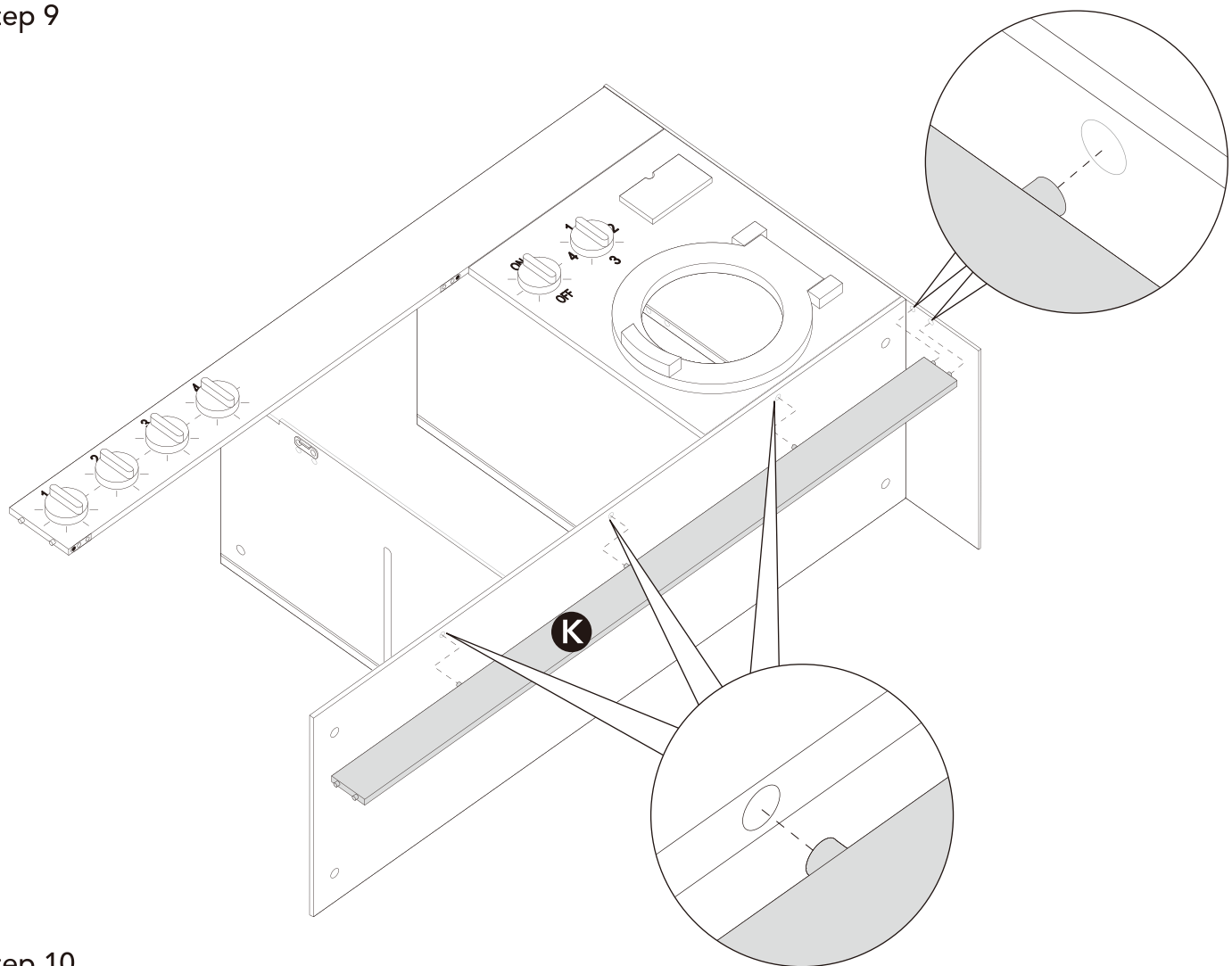


## Step 8

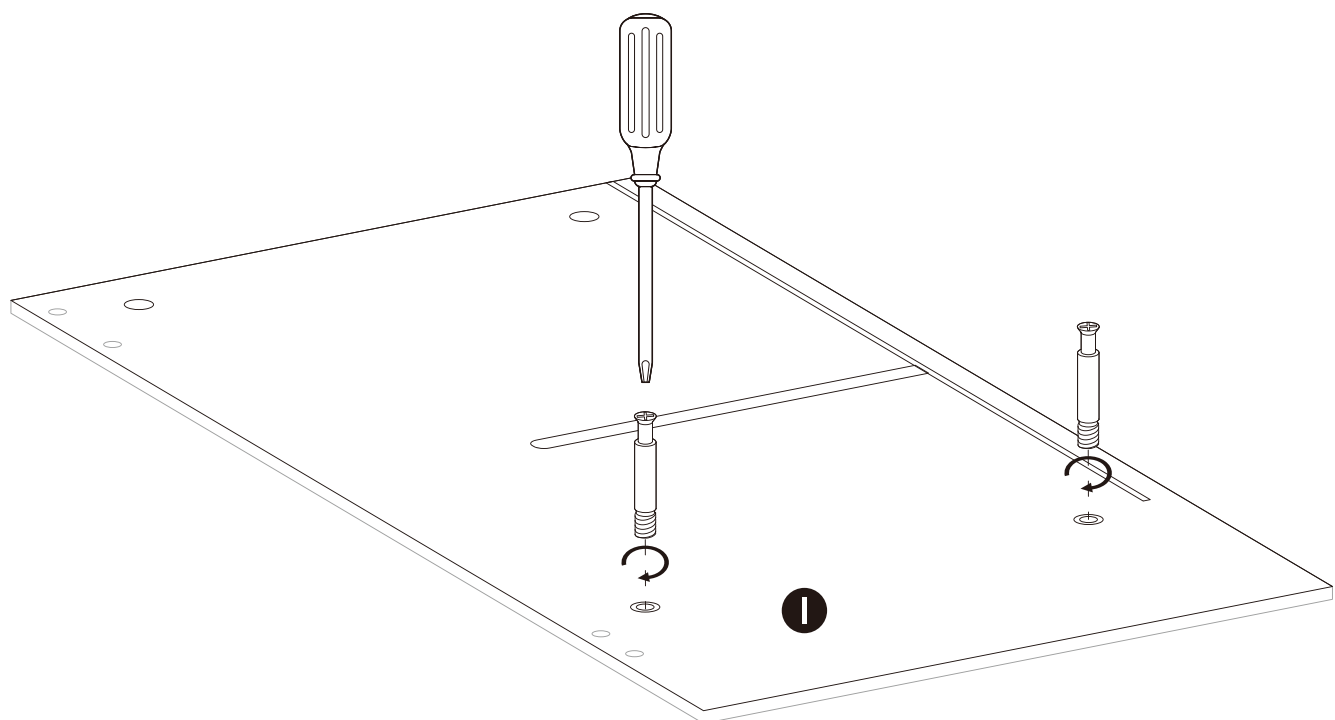




## Step 9

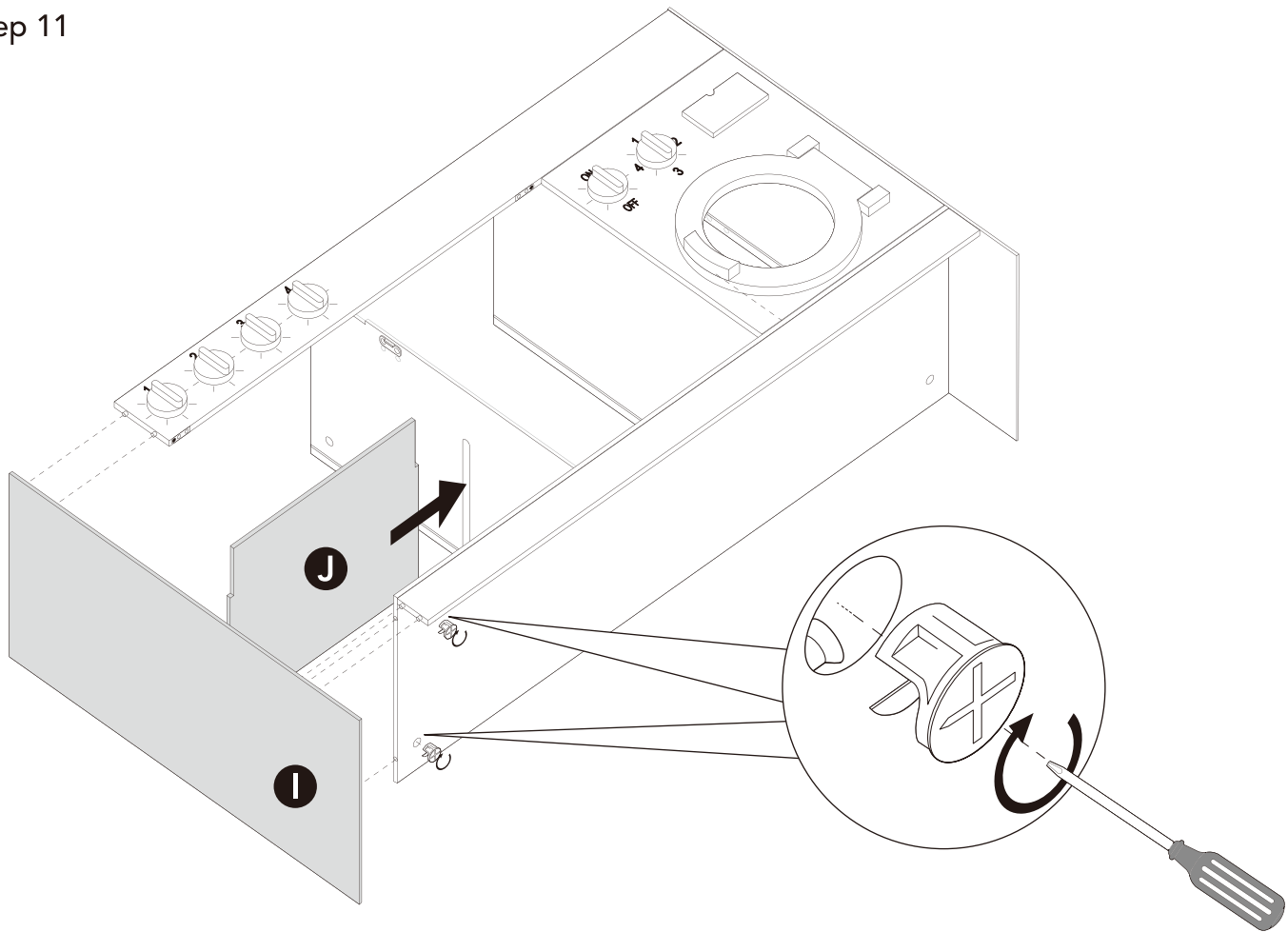


## Step 10

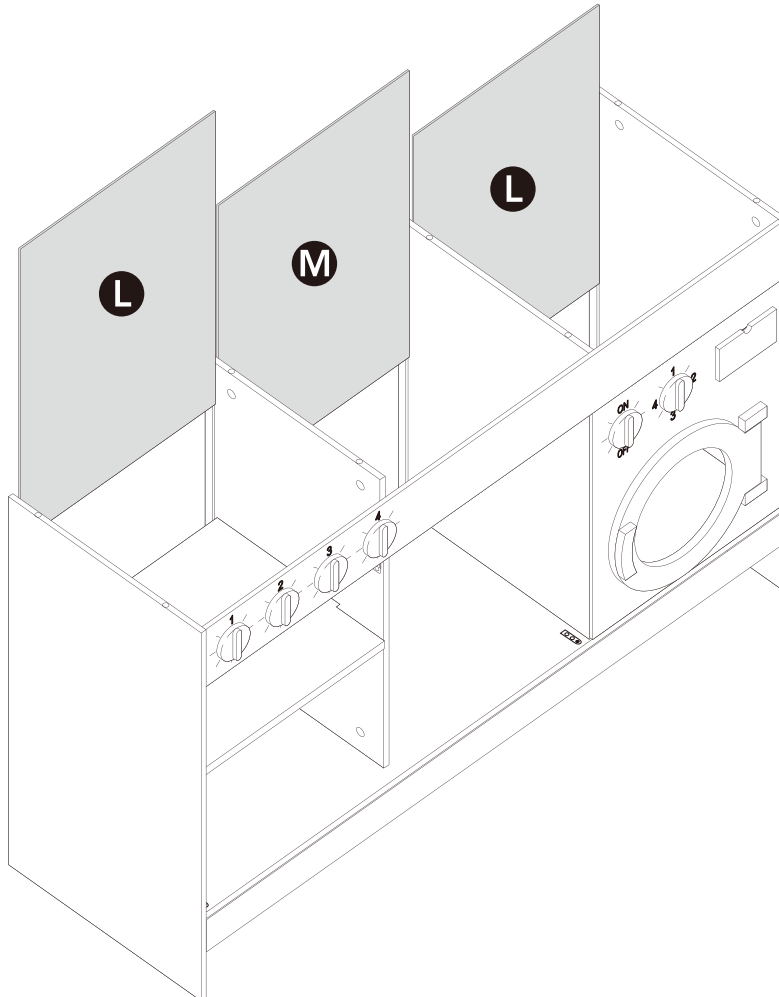




## Step 11

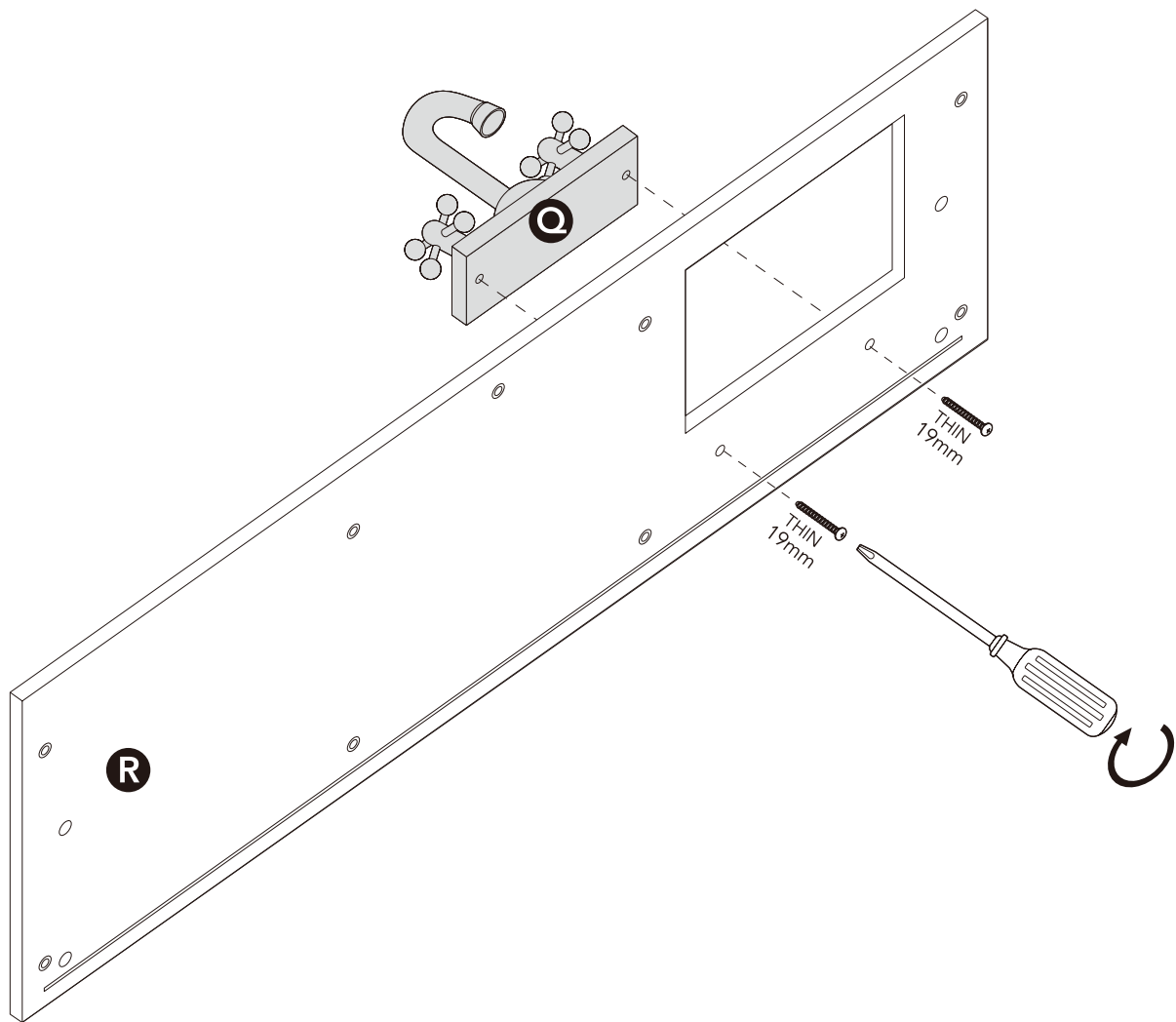


## Step 12

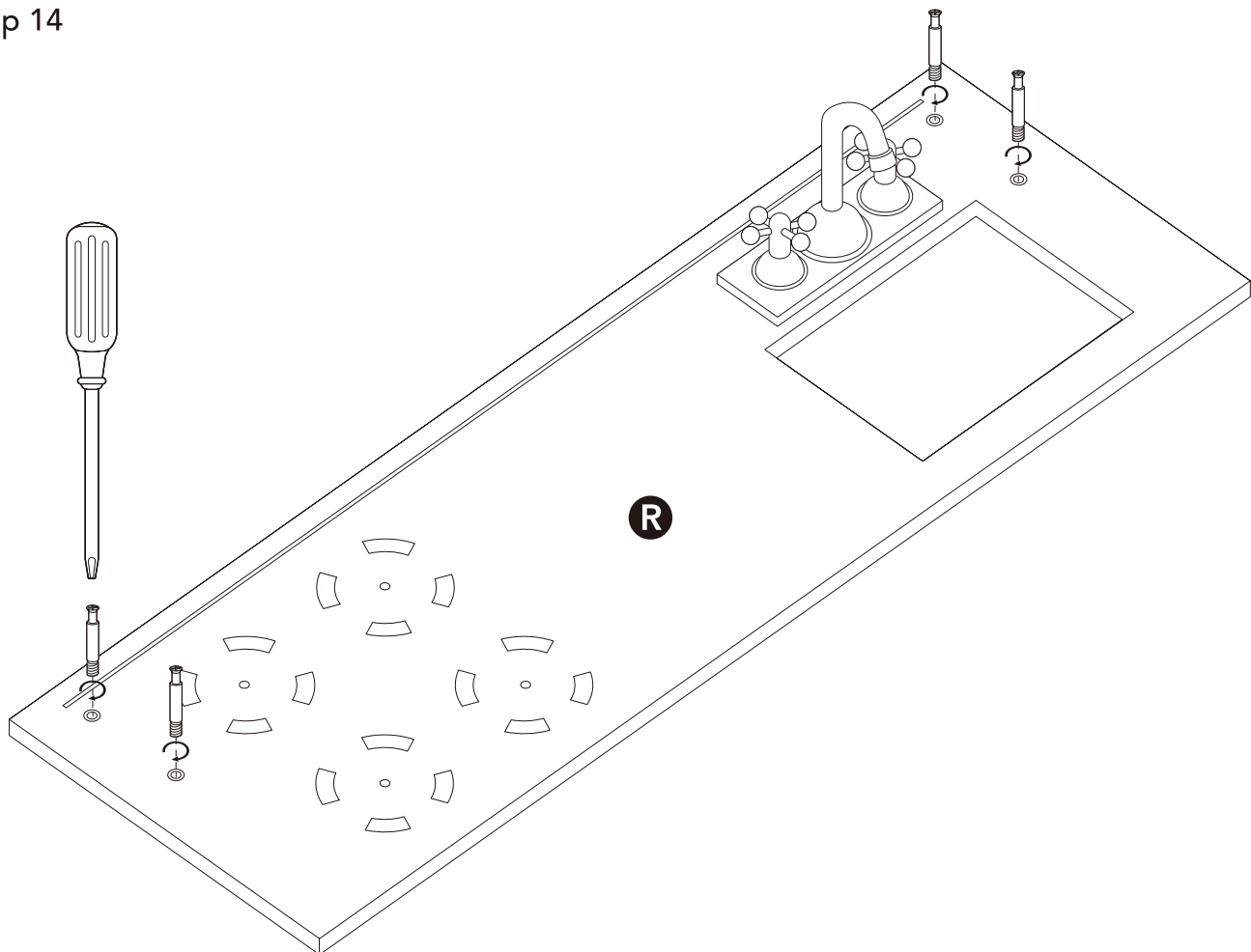




## Step 13

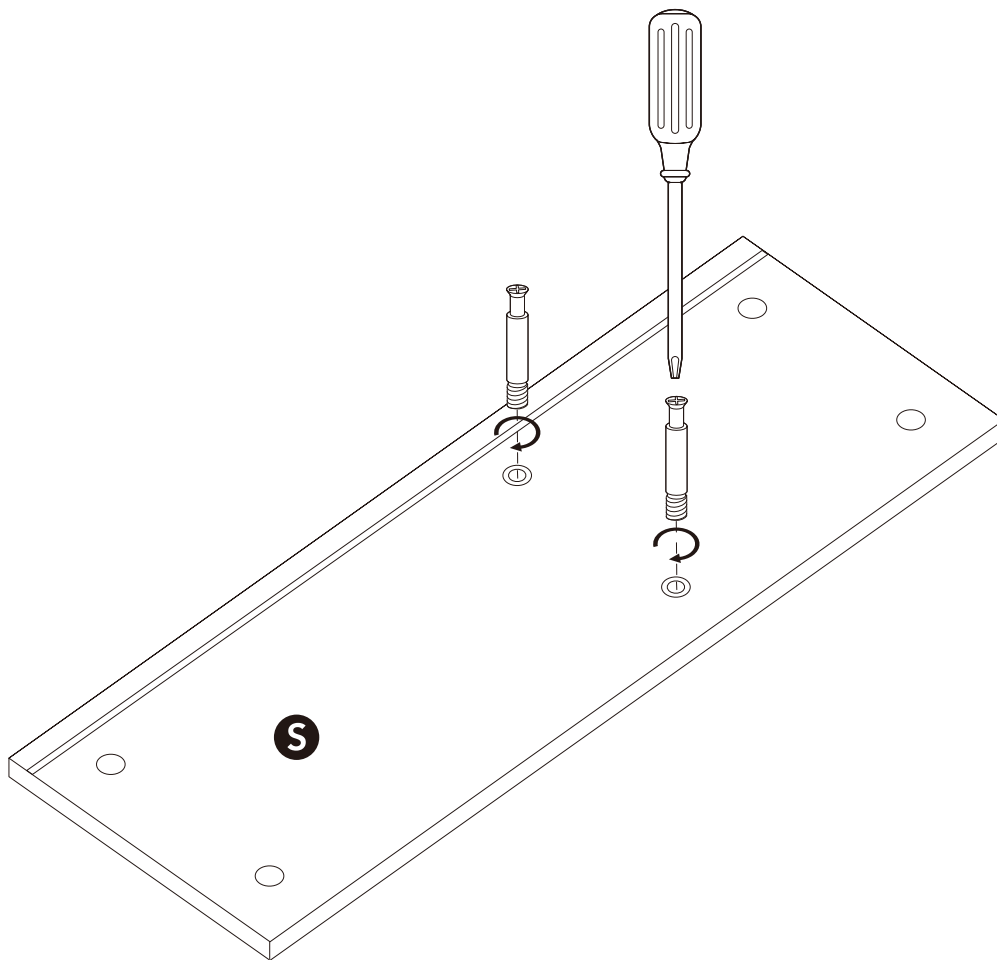


## Step 14

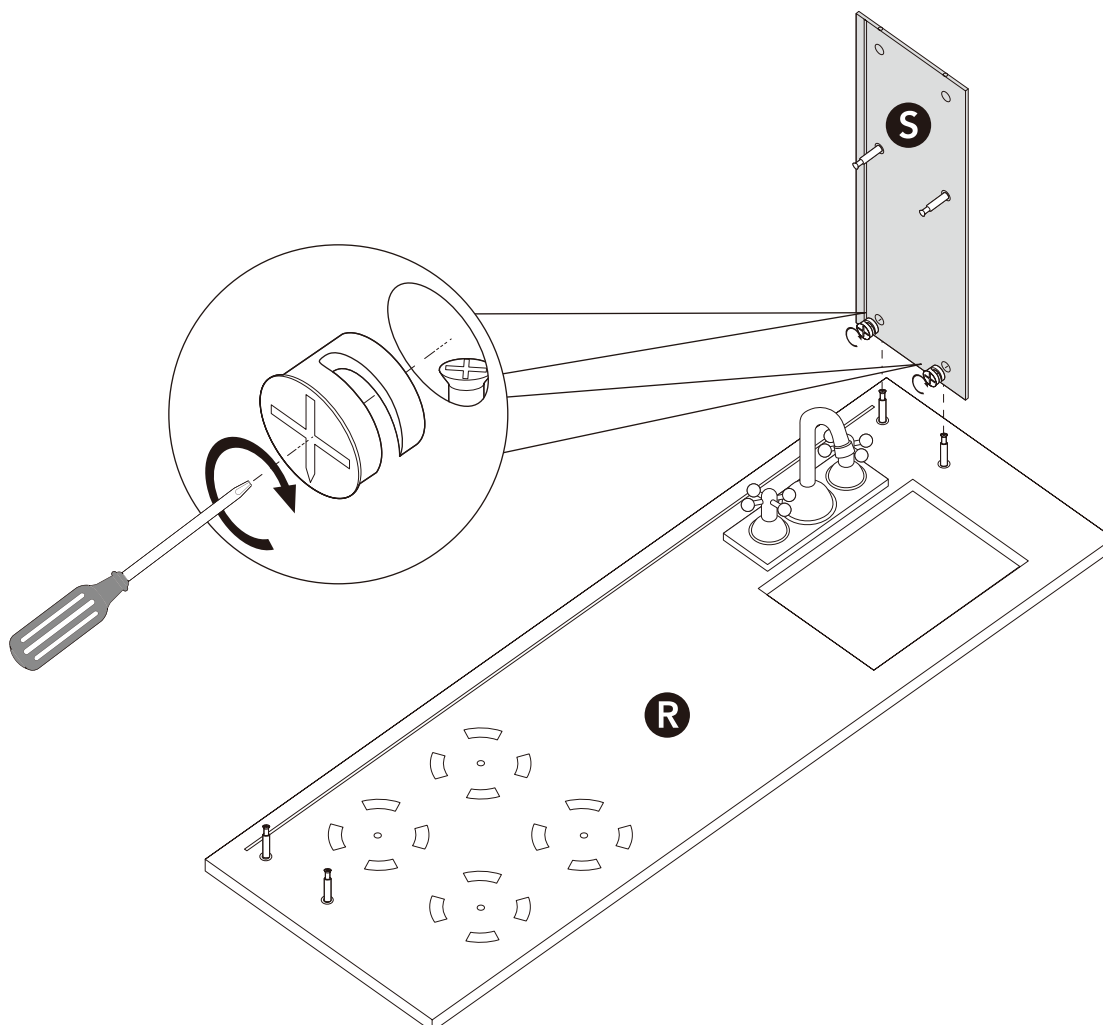




## Step 15

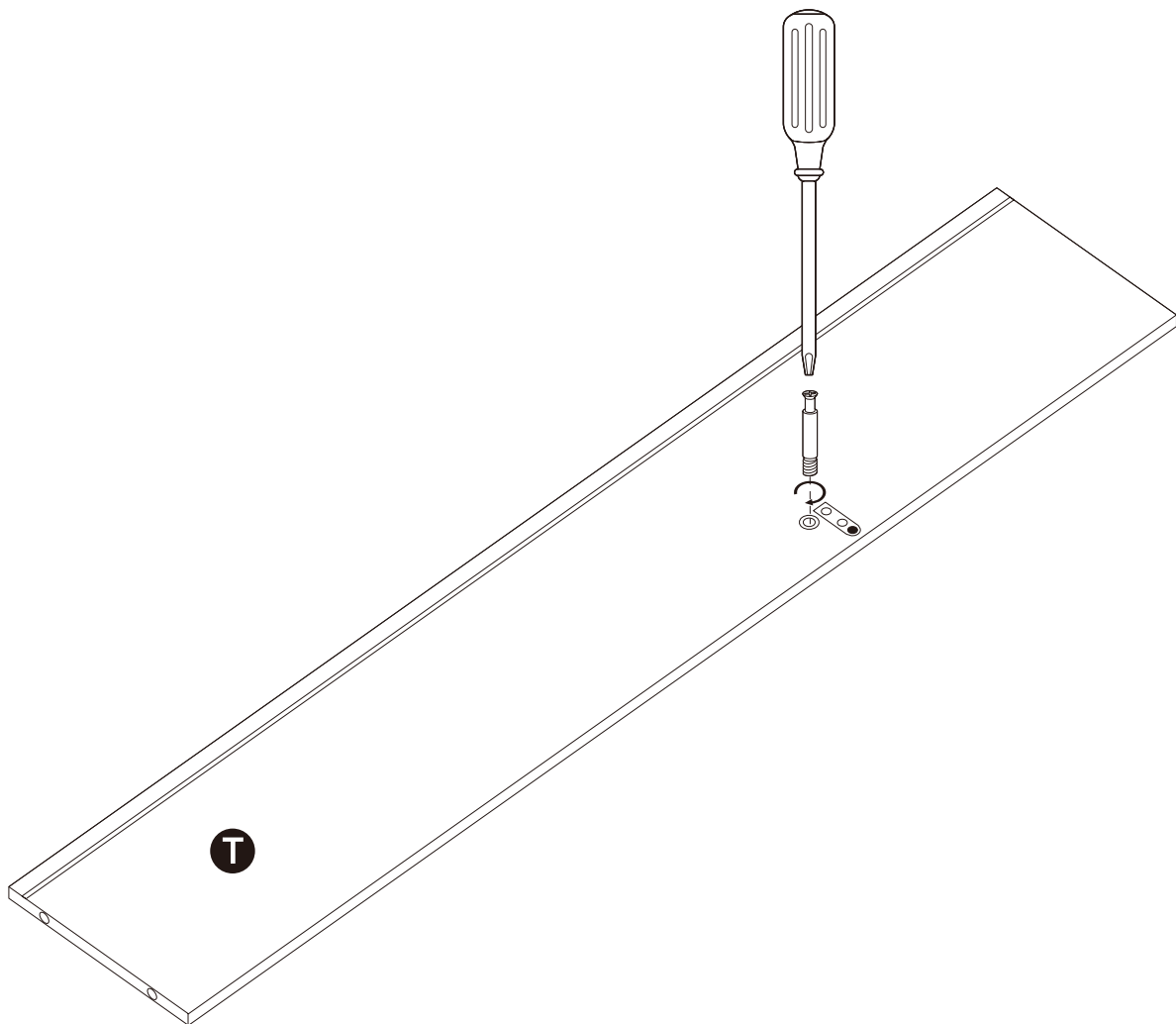


## Step 16

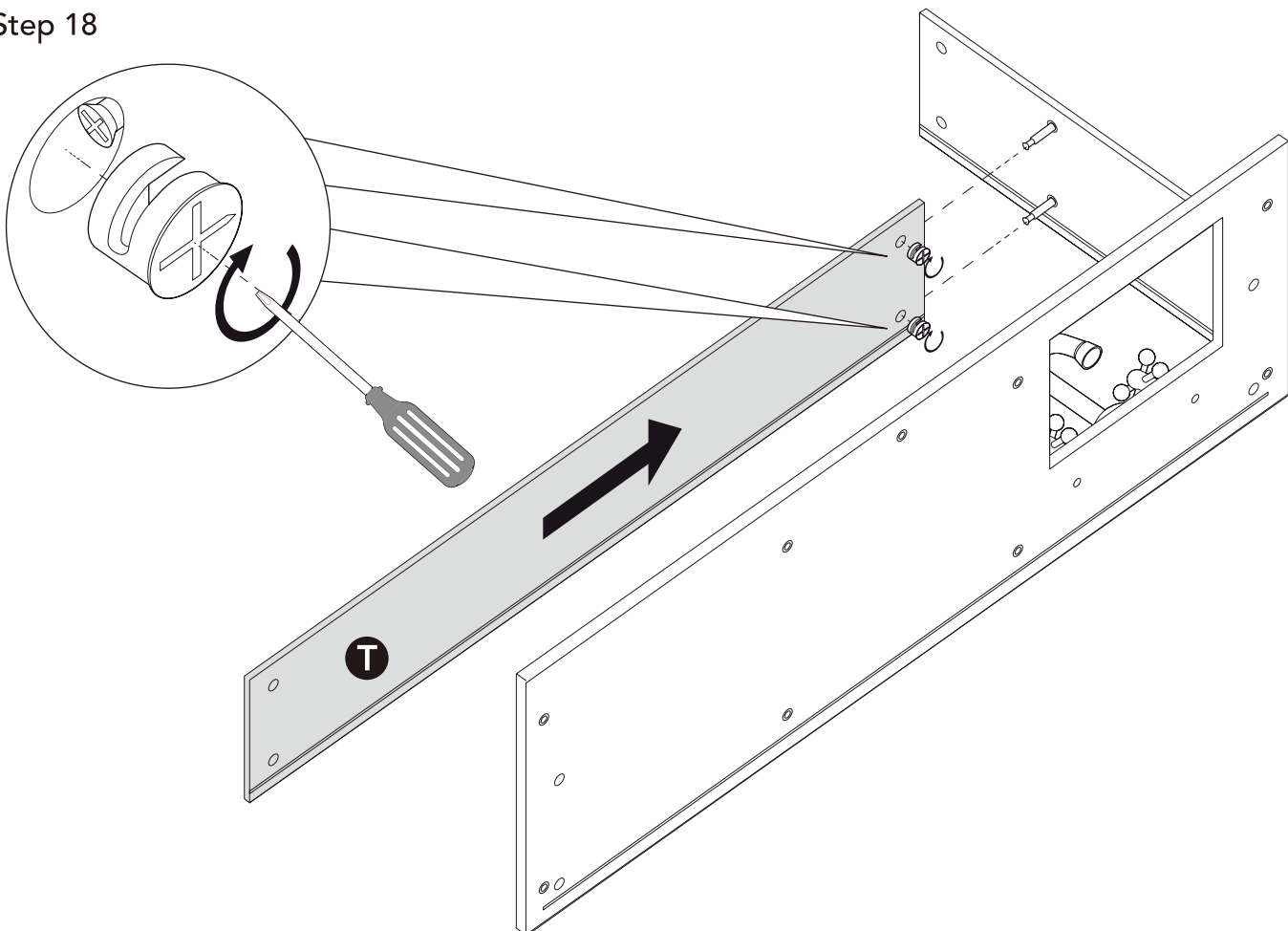




## Step 17

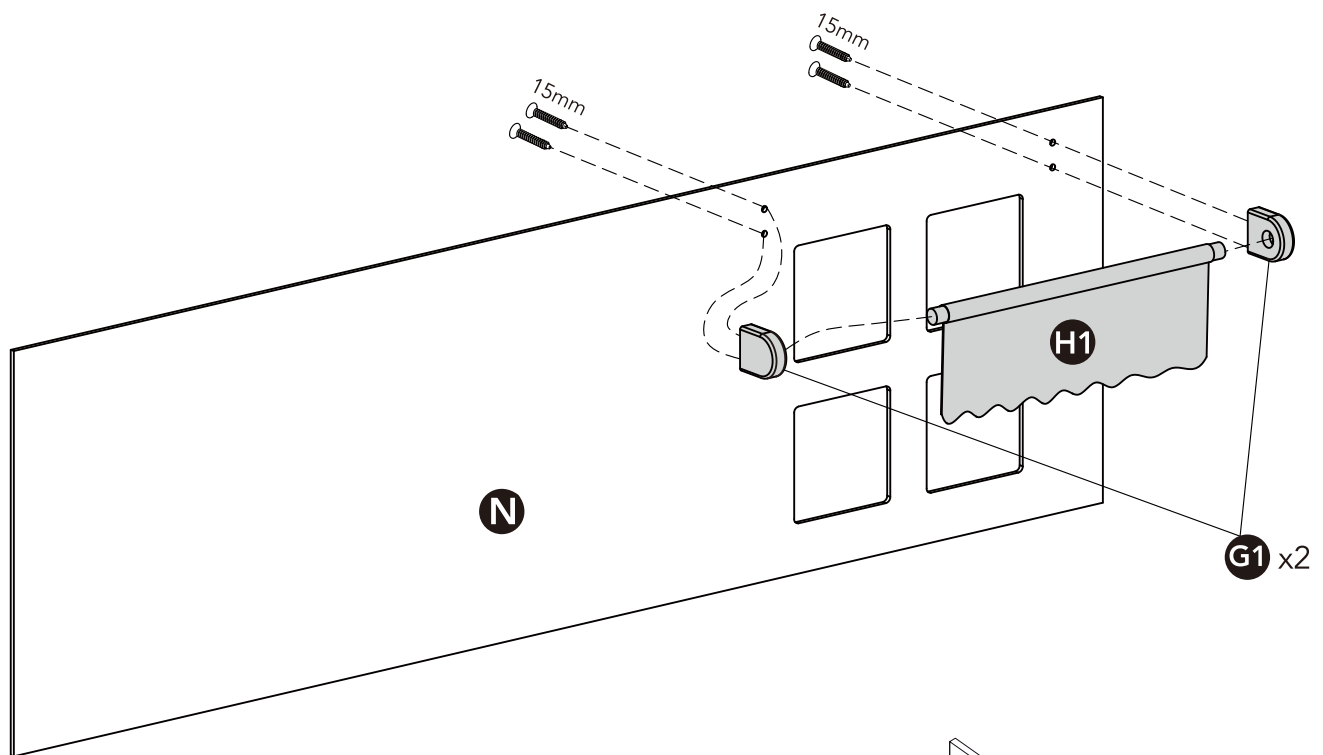


## Step 18

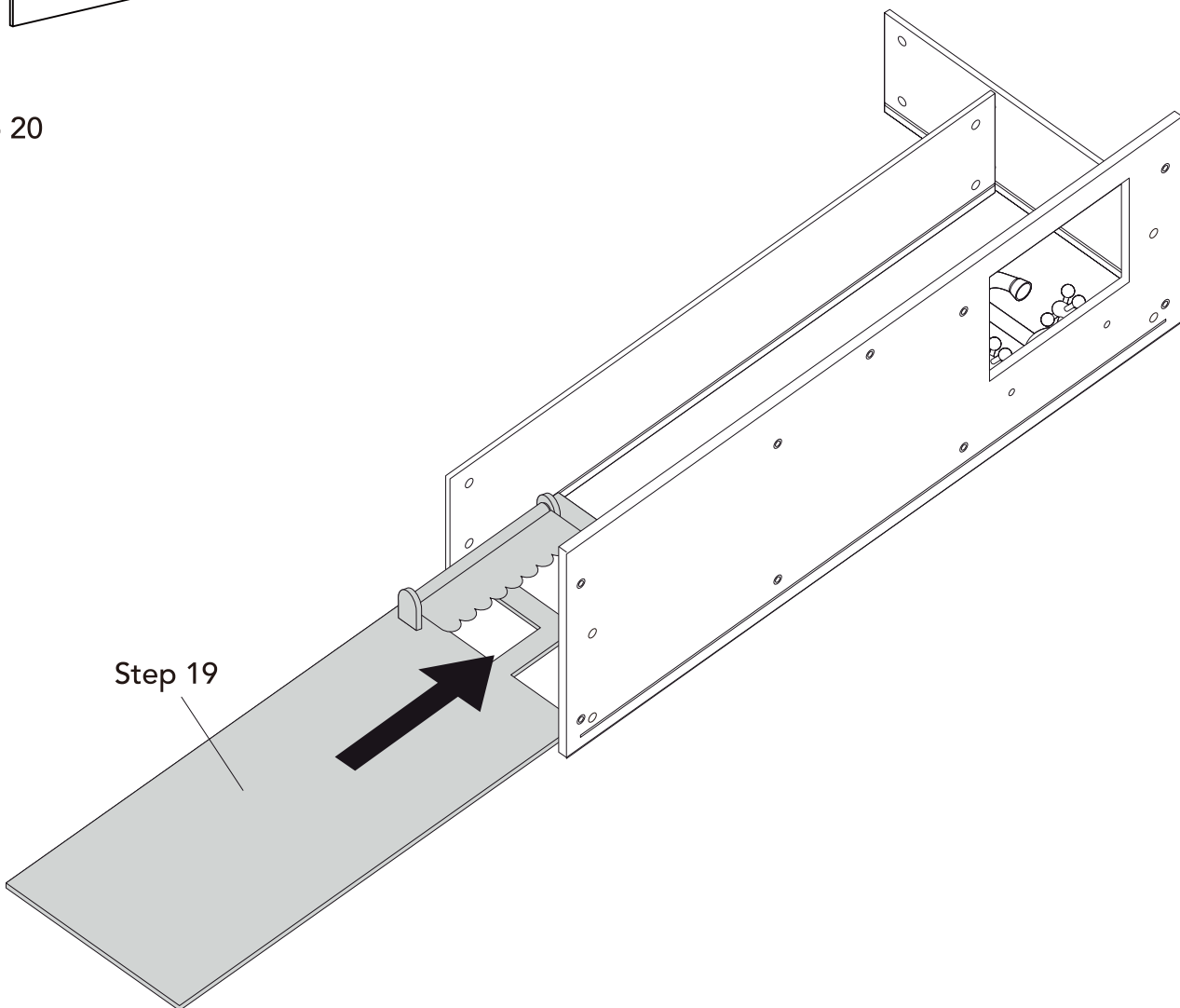




## Step 19



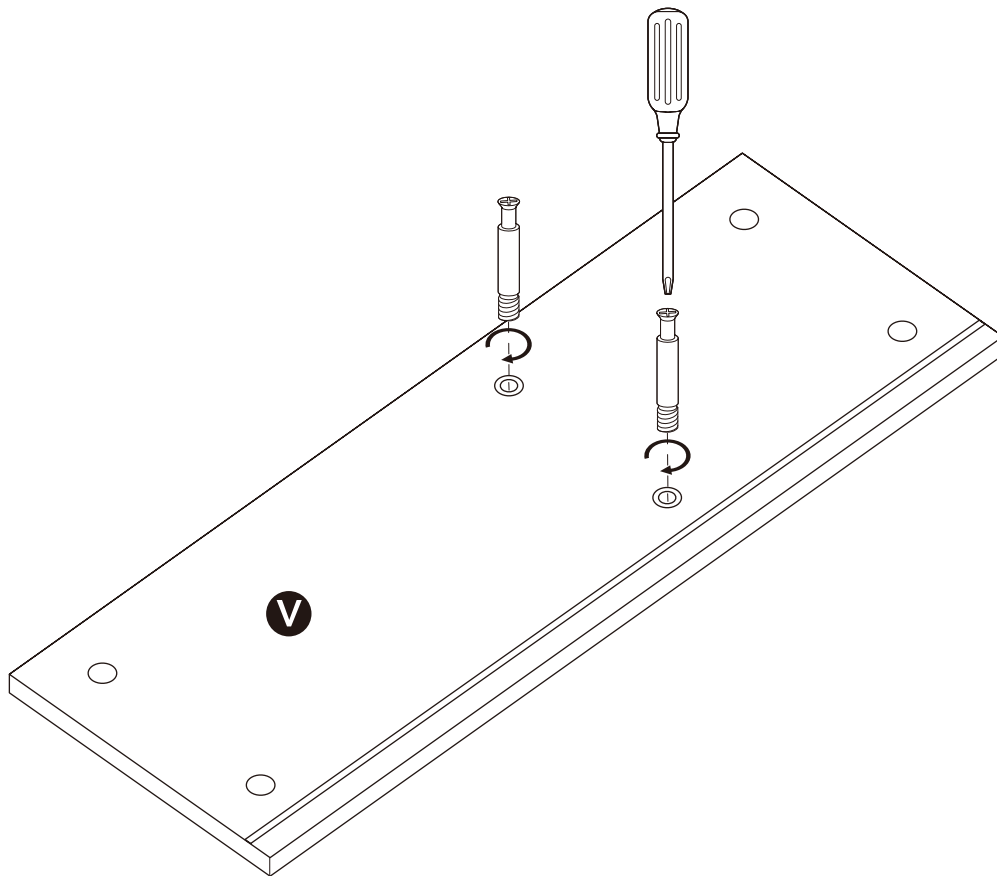
## Step 20





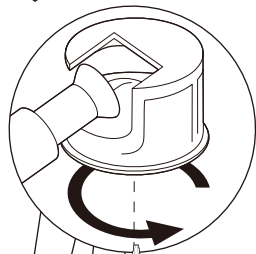


## Step 21

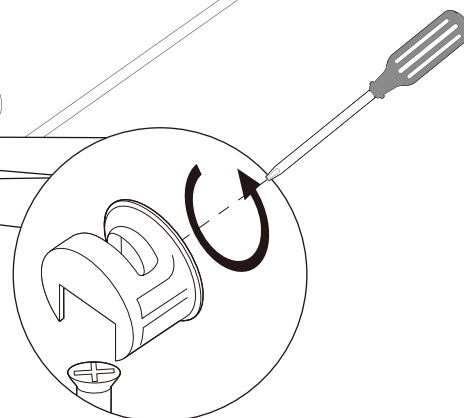


## Step 22

**1** Insert cam bolts into part **T**

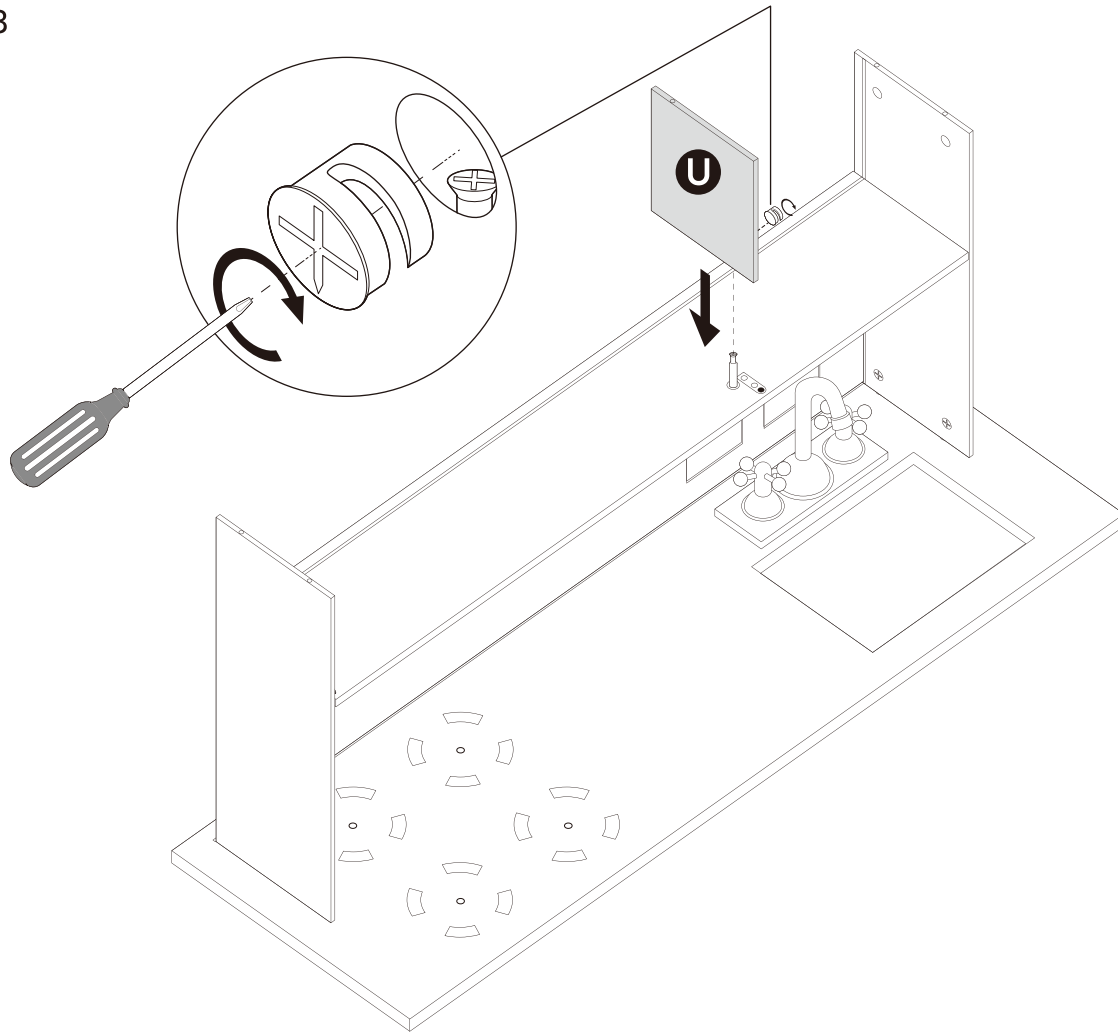


**2** Then drop part **V** onto cam bolts on part **R**

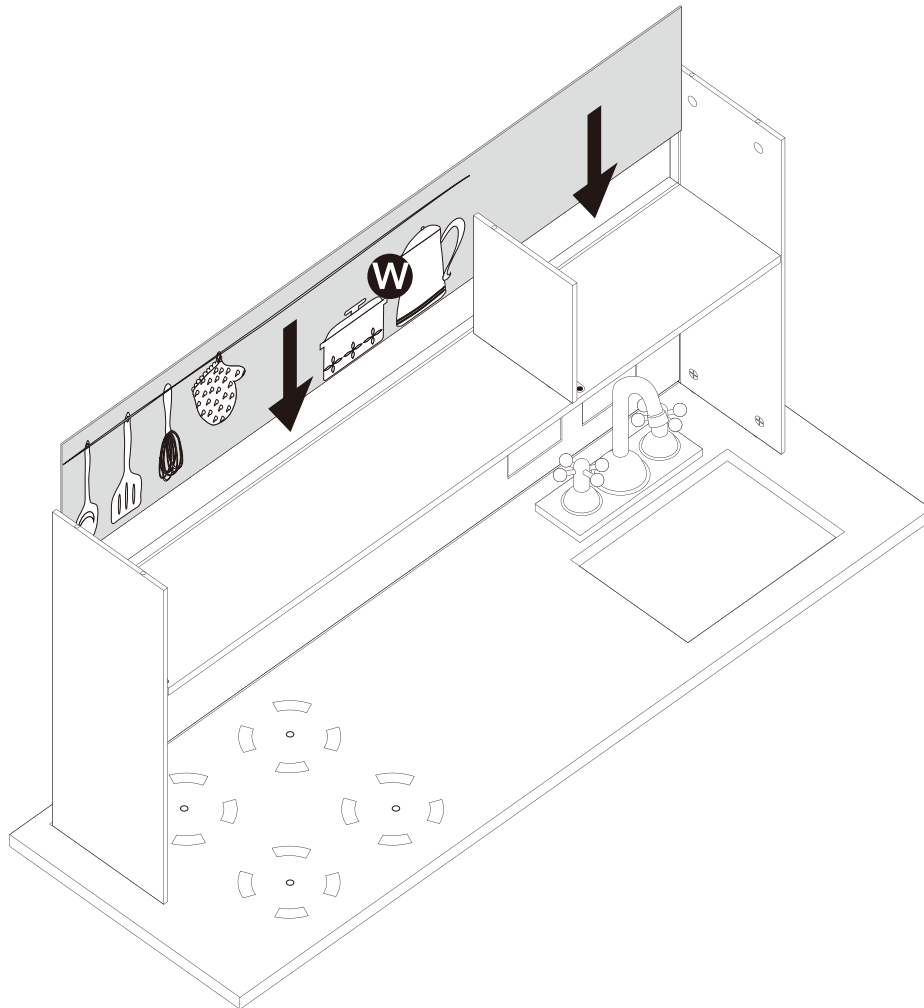




## Step 23

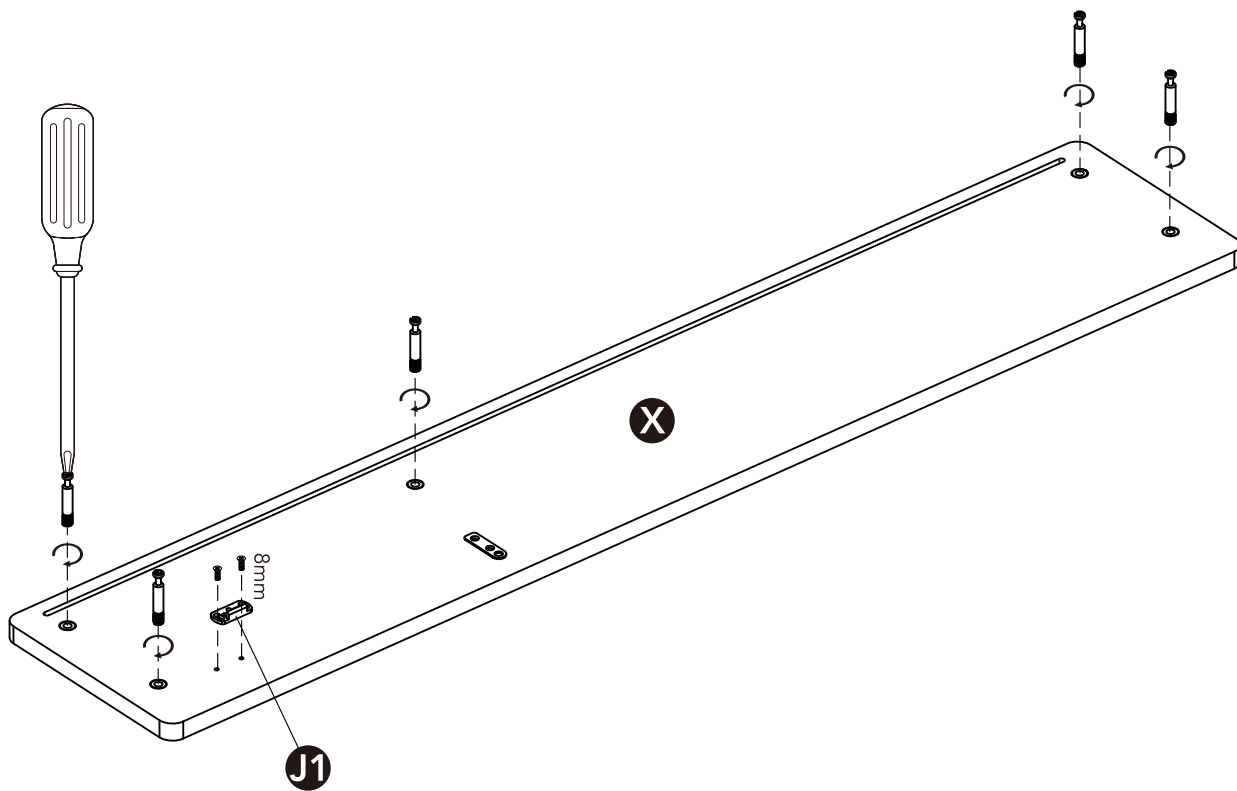


## Step 24

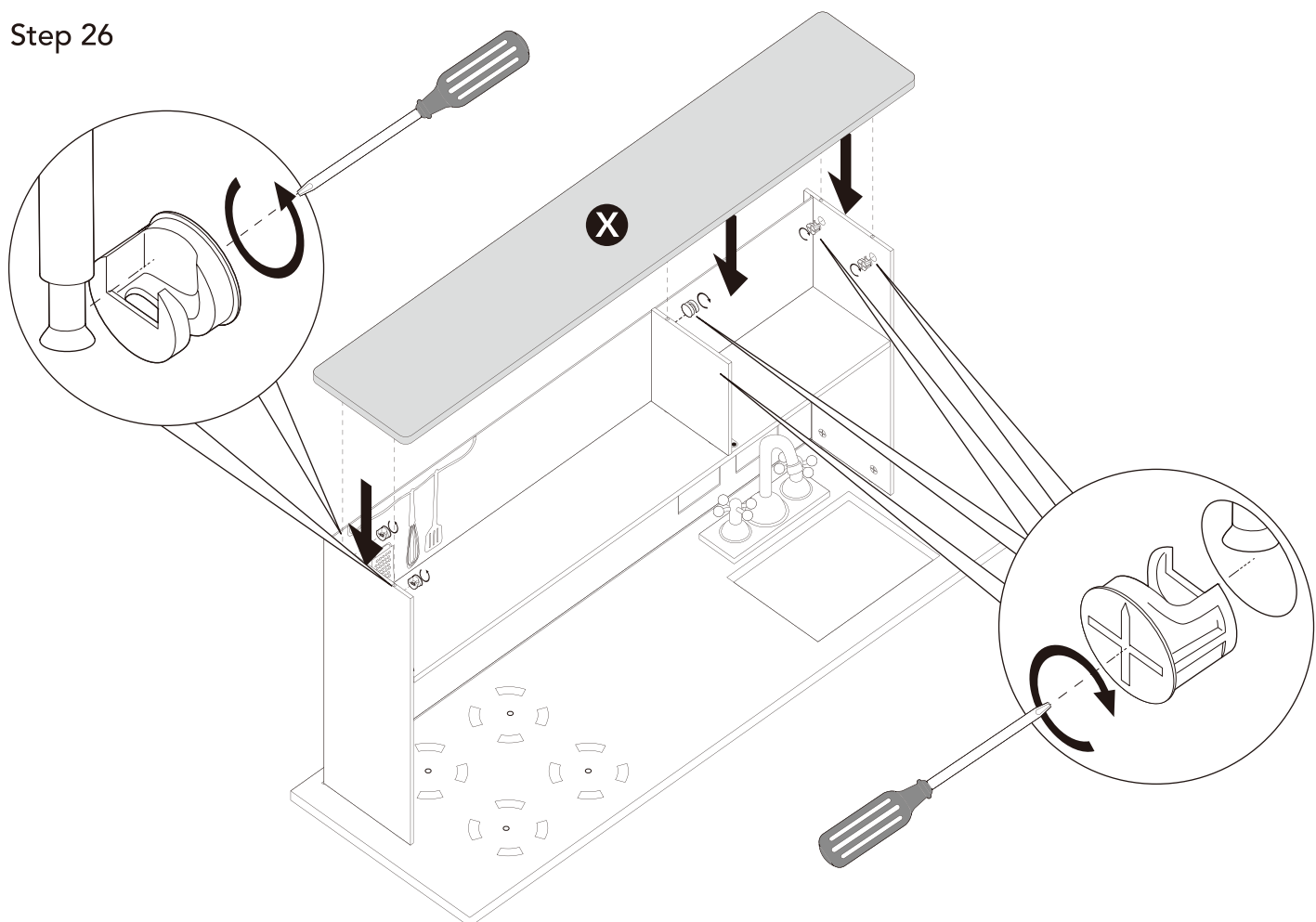




## Step 25

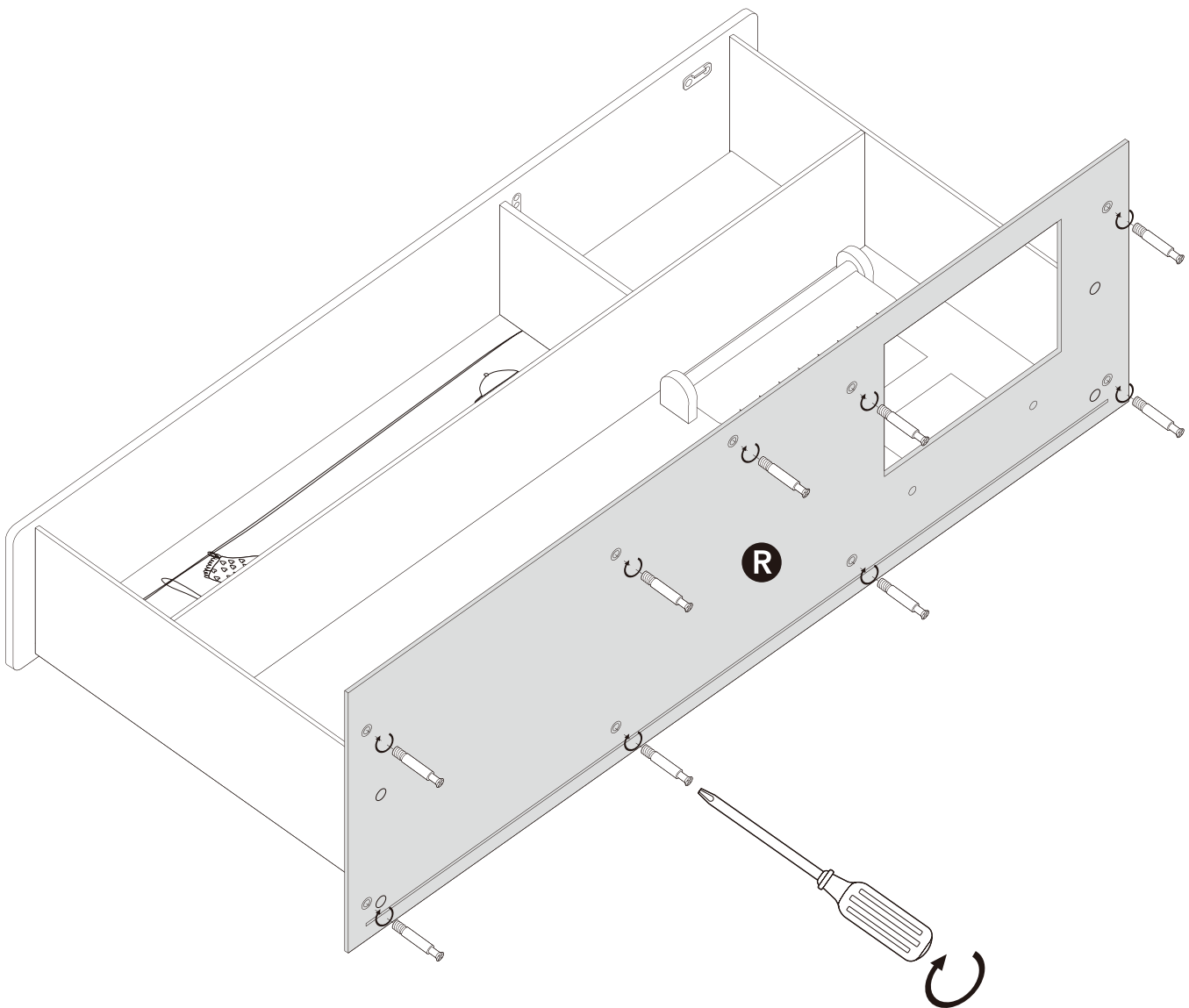


## Step 26



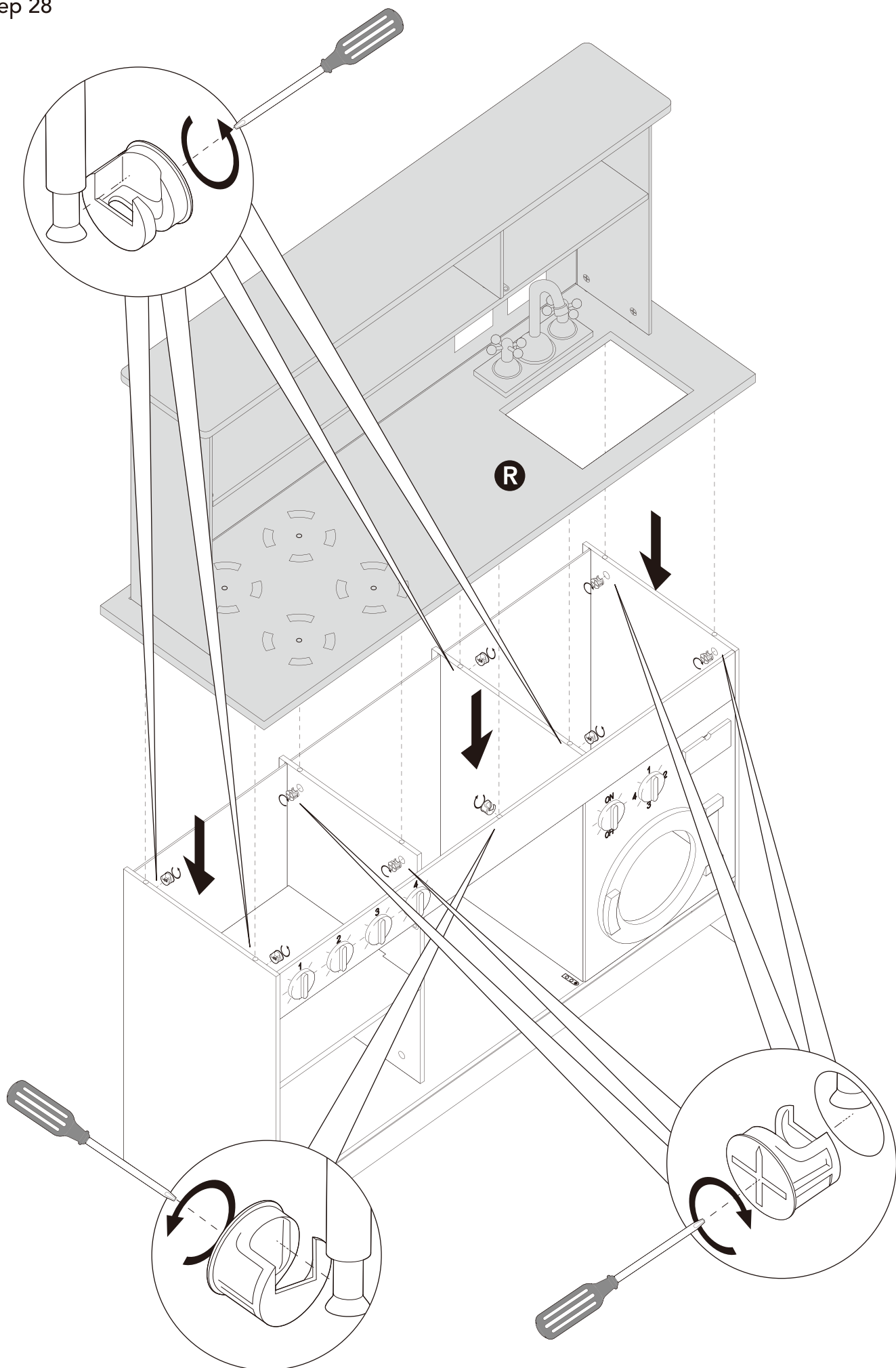


## Step 27



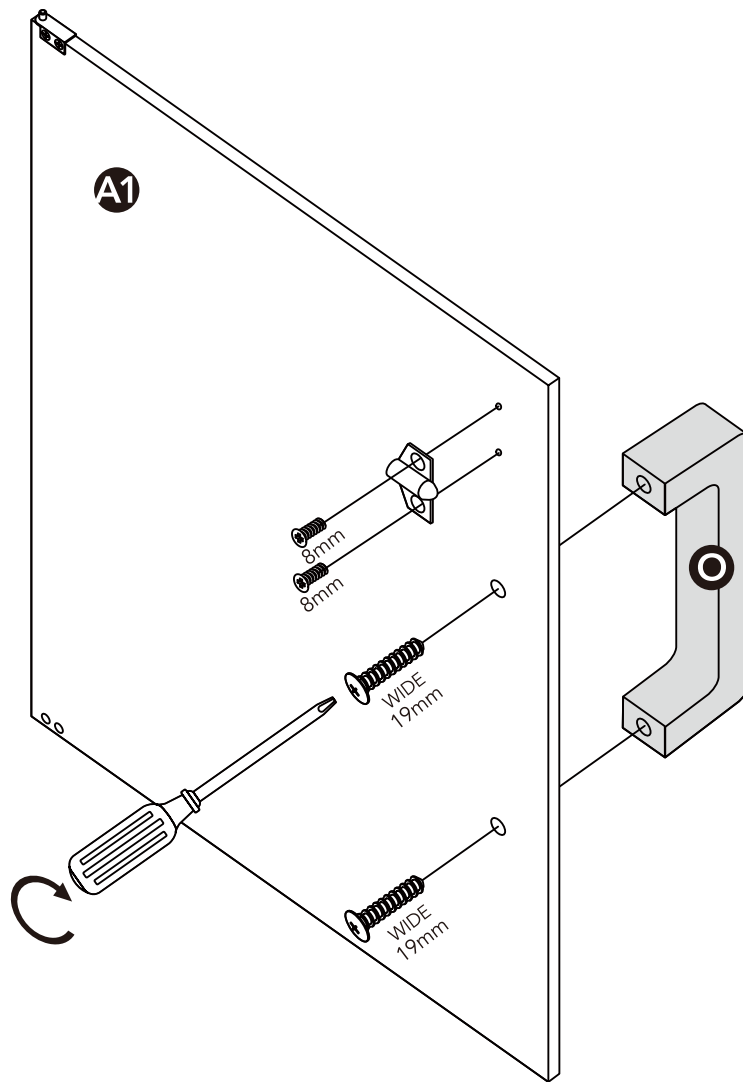


## Step 28

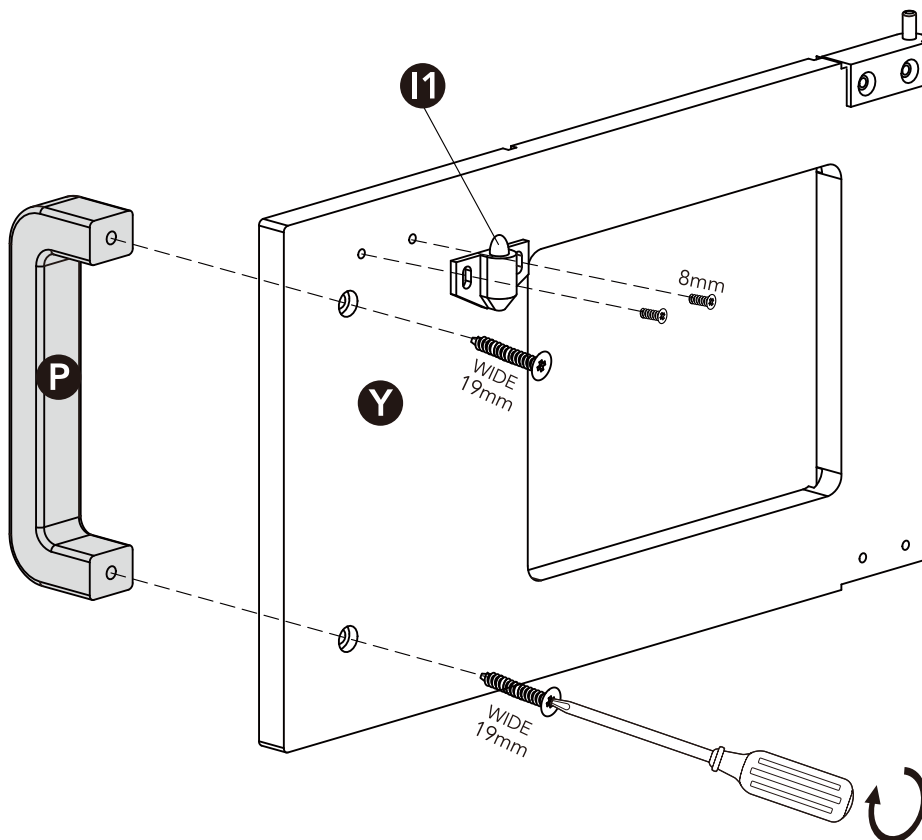




## Step 29

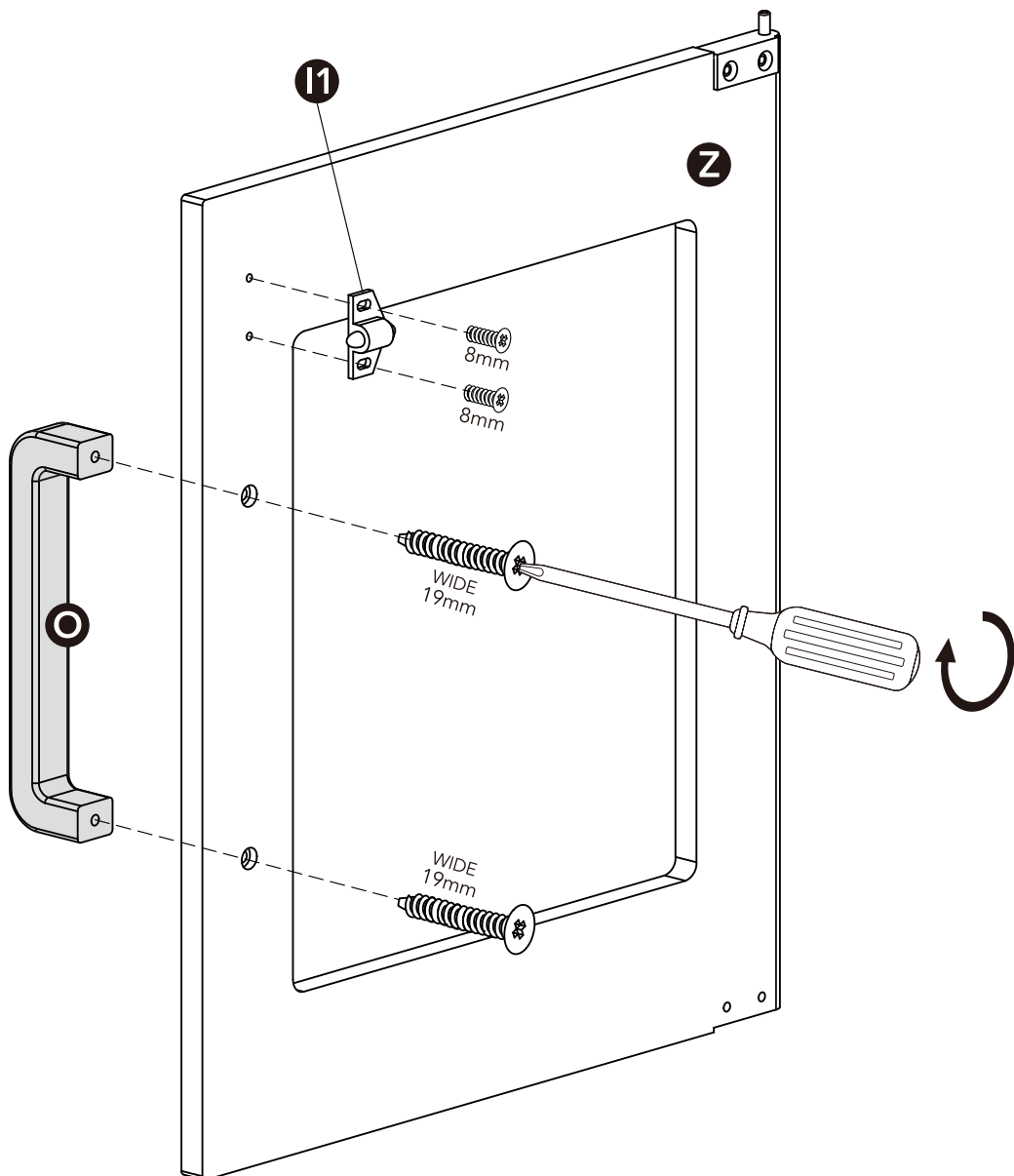


## Step 30



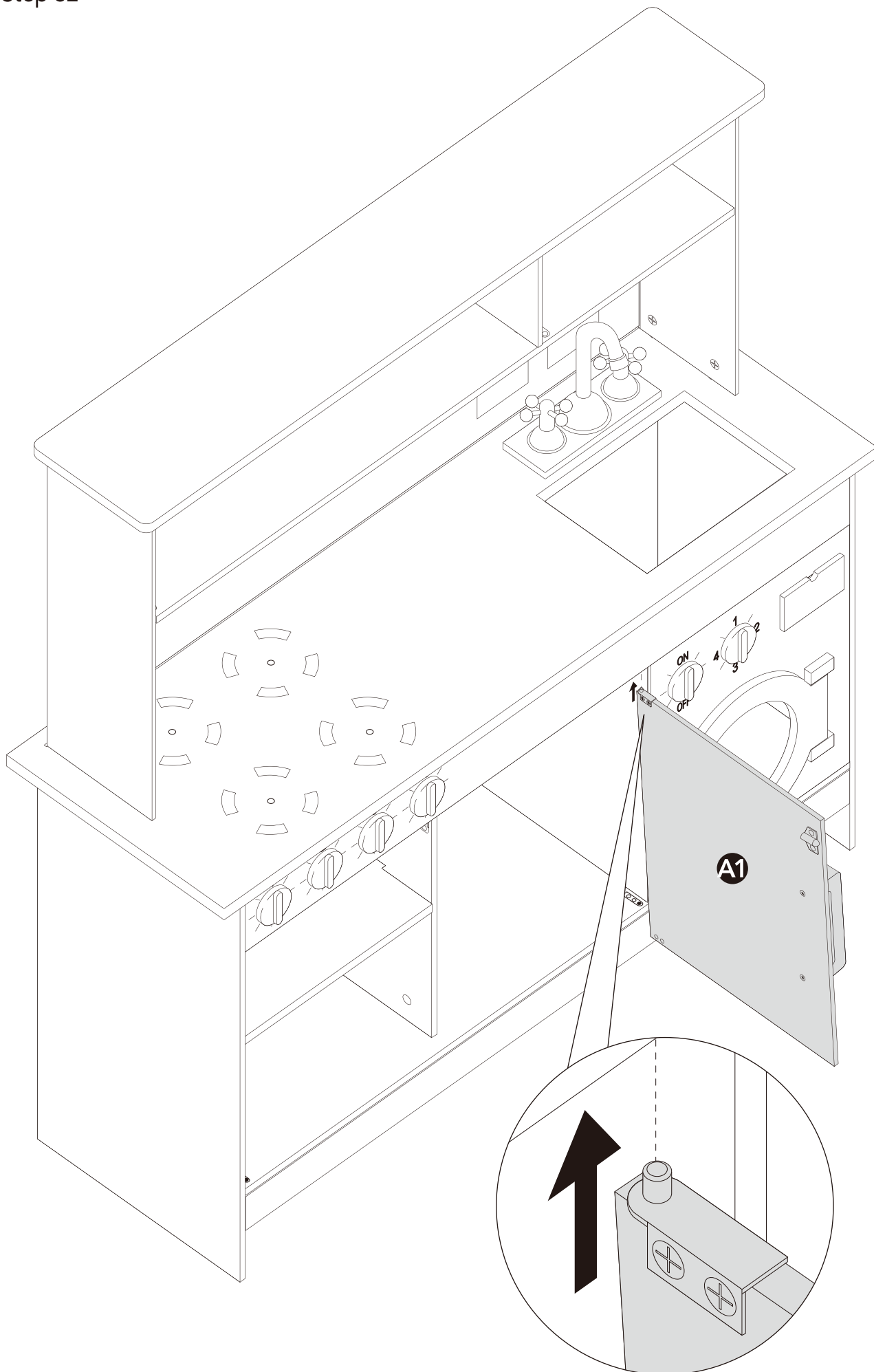


## Step 31





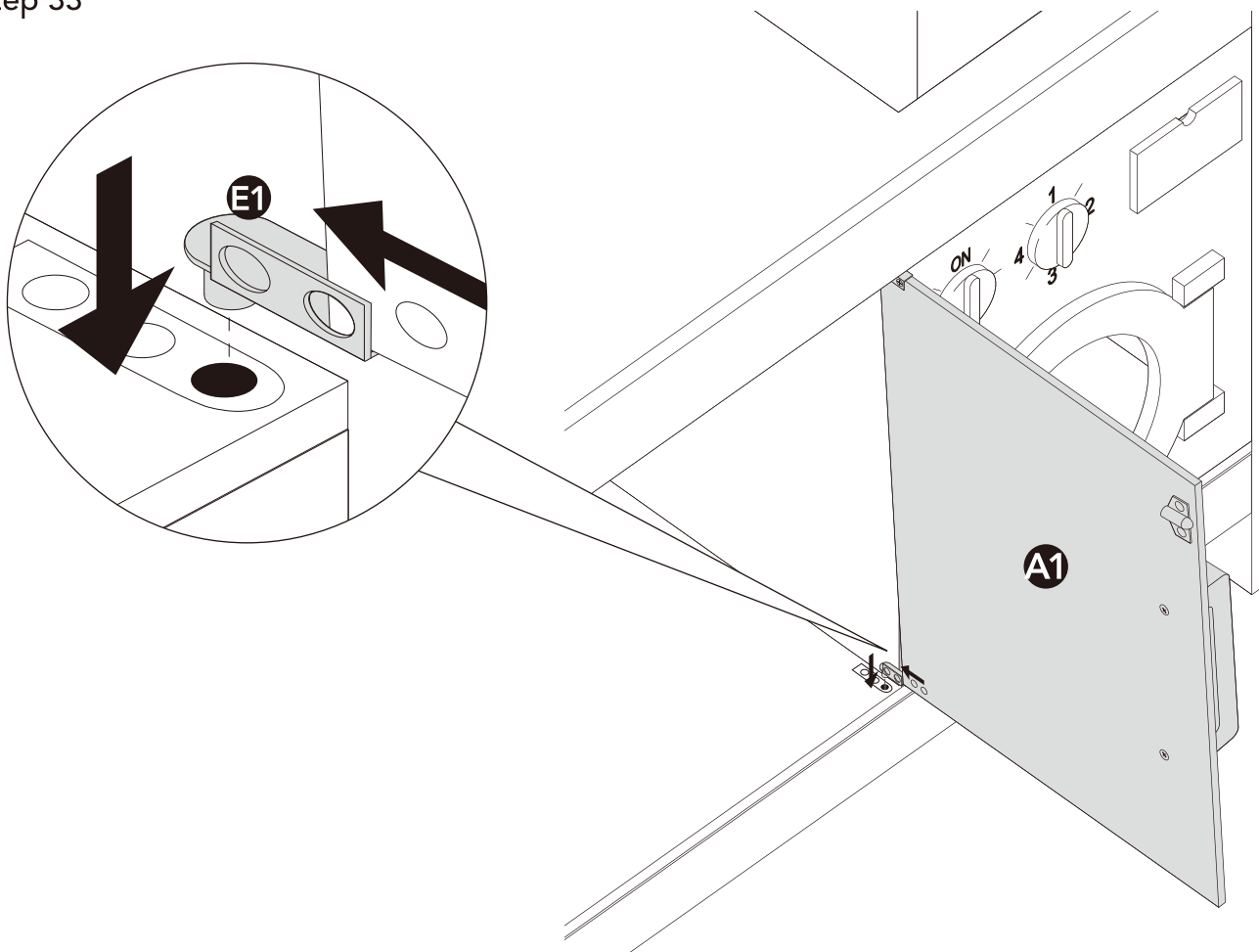
## Step 32



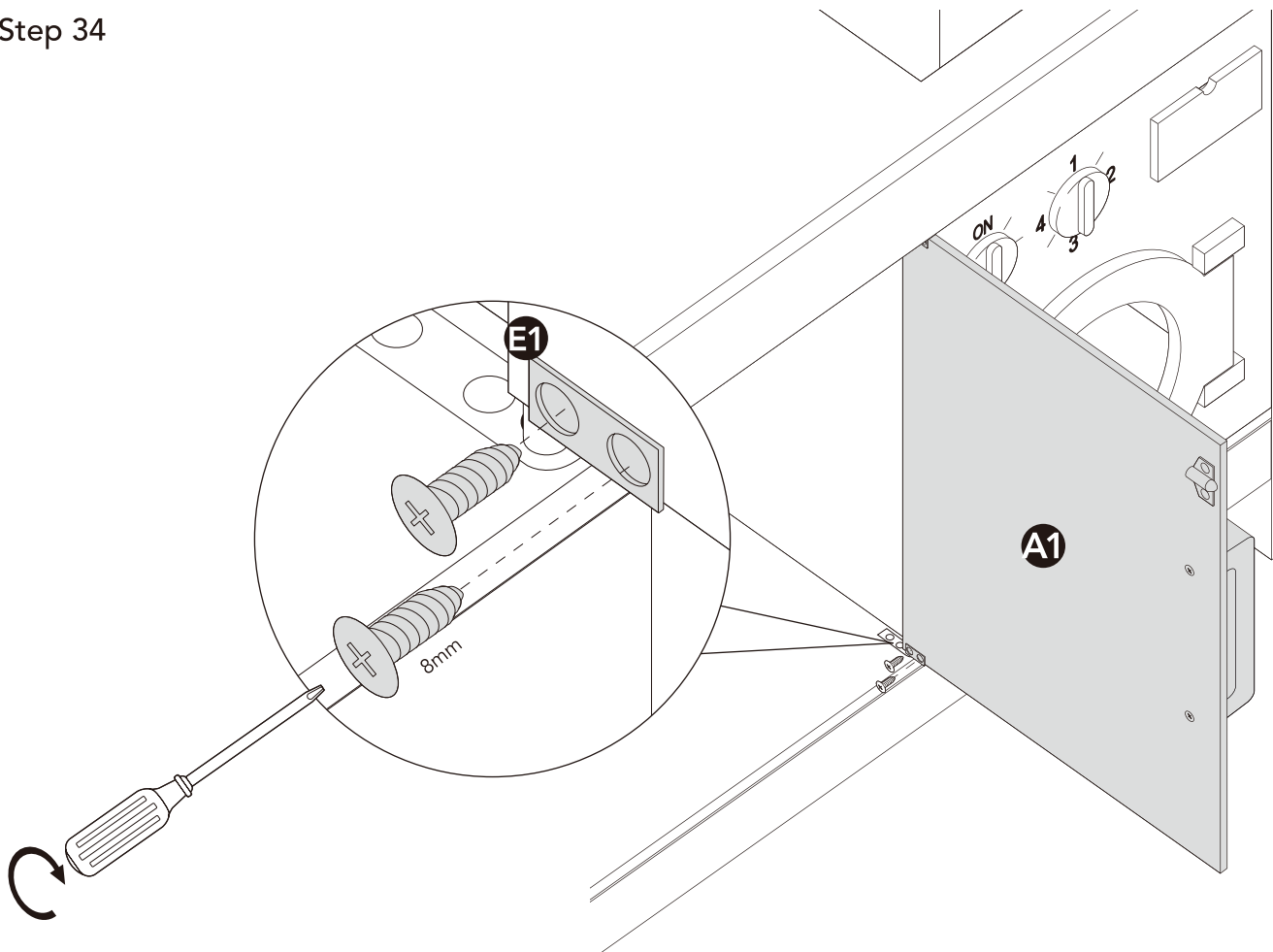




## Step 33

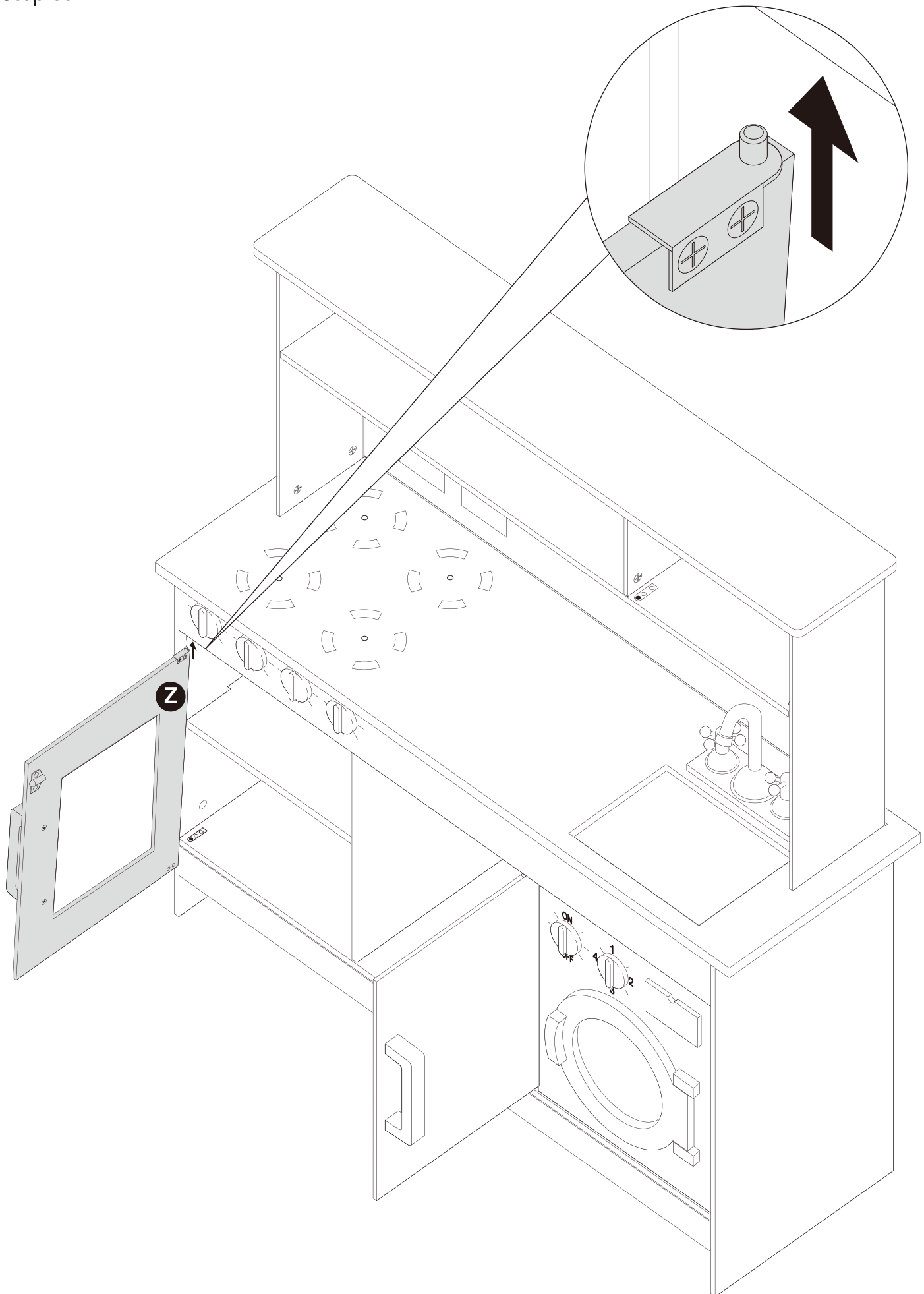


## Step 34



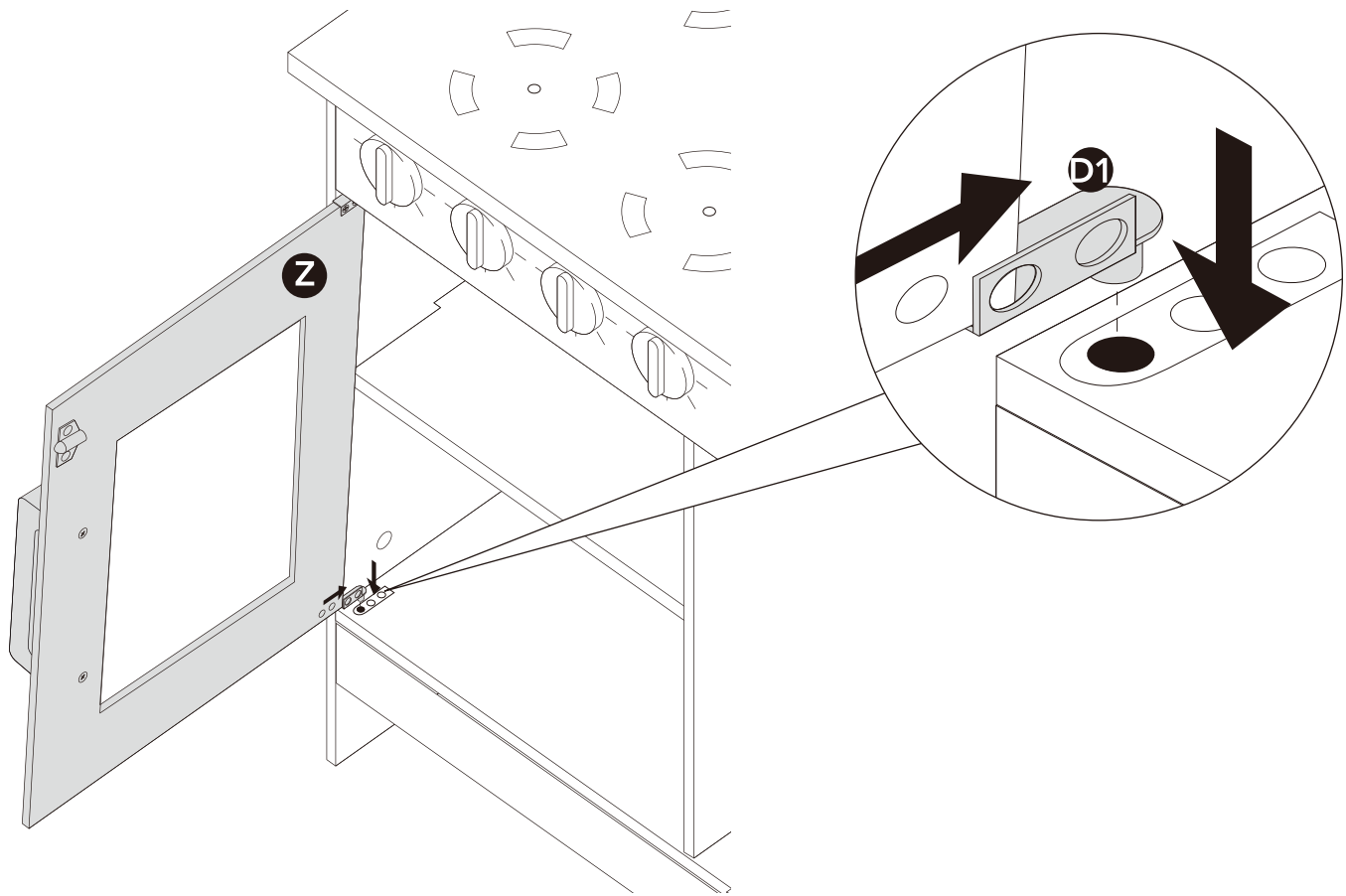


## Step 35

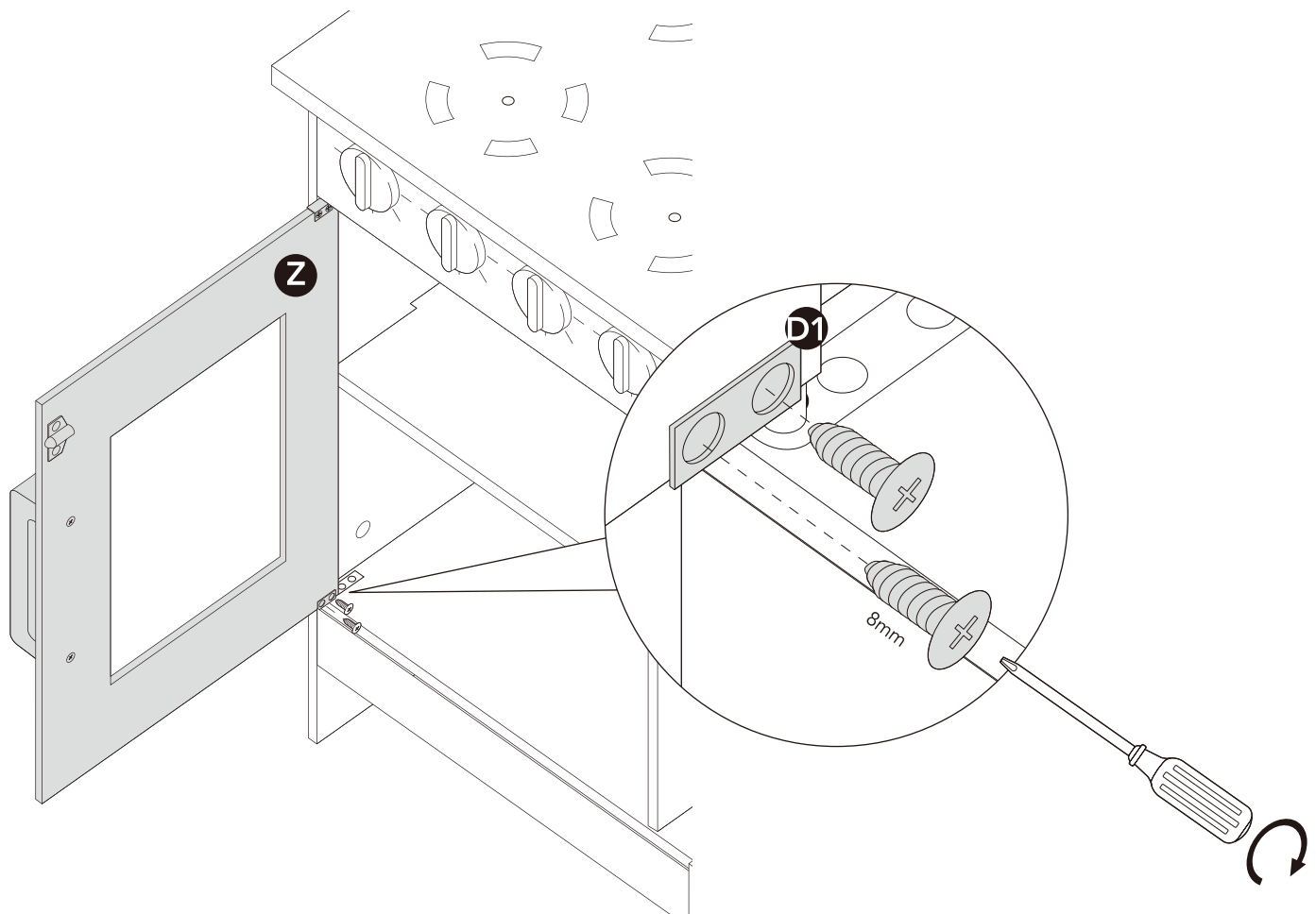




## Step 36

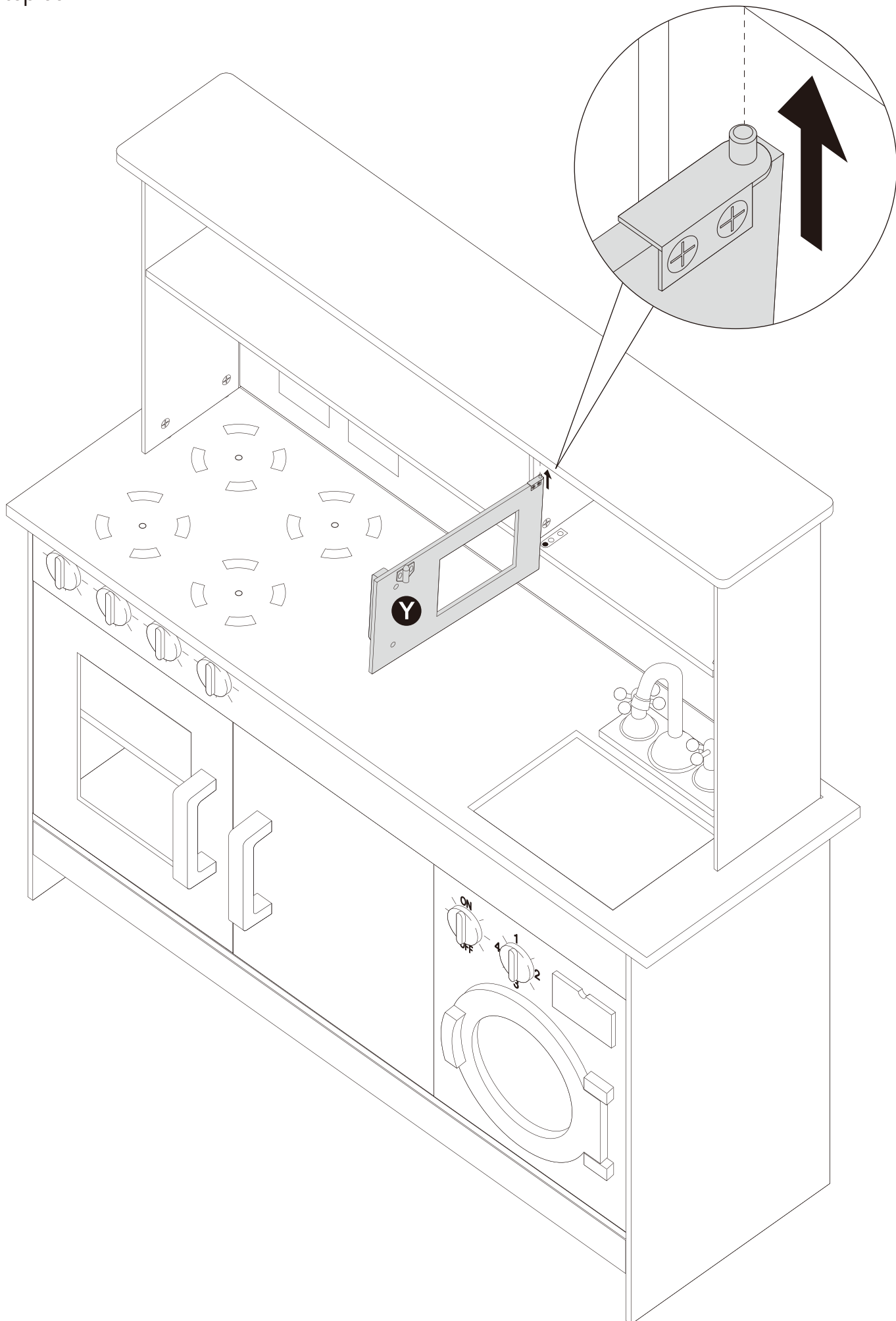


## Step 37



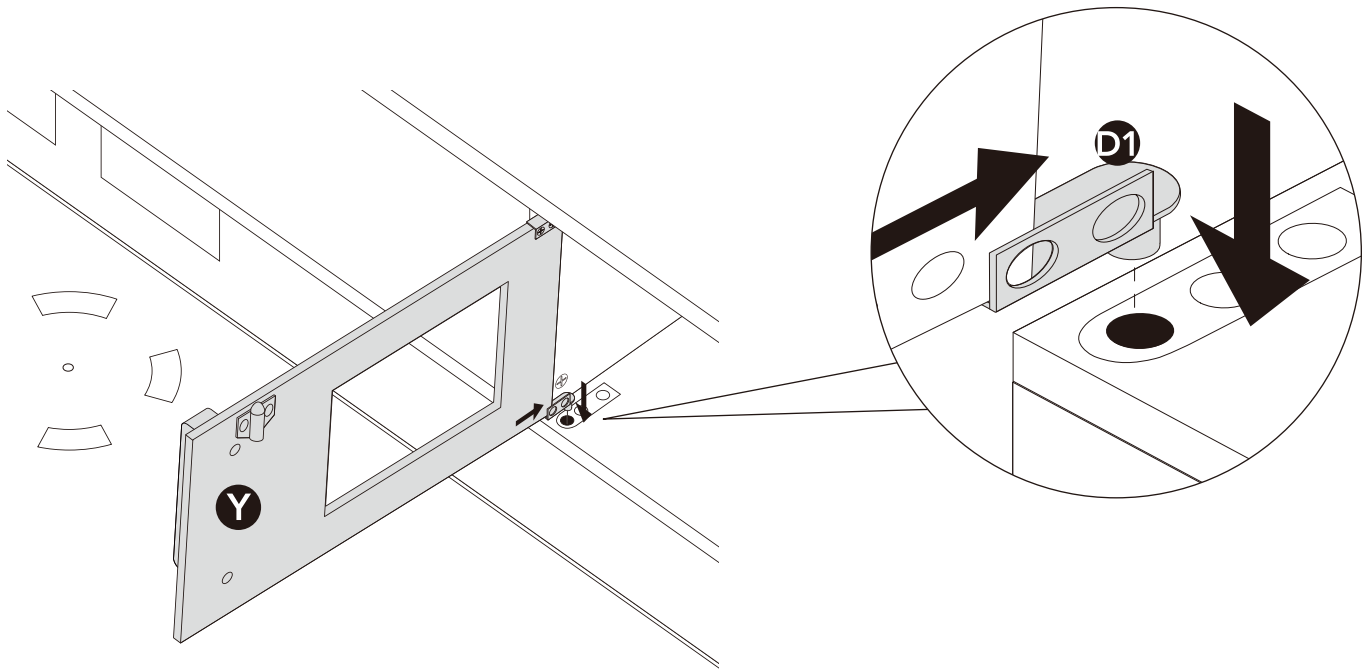


## Step 38

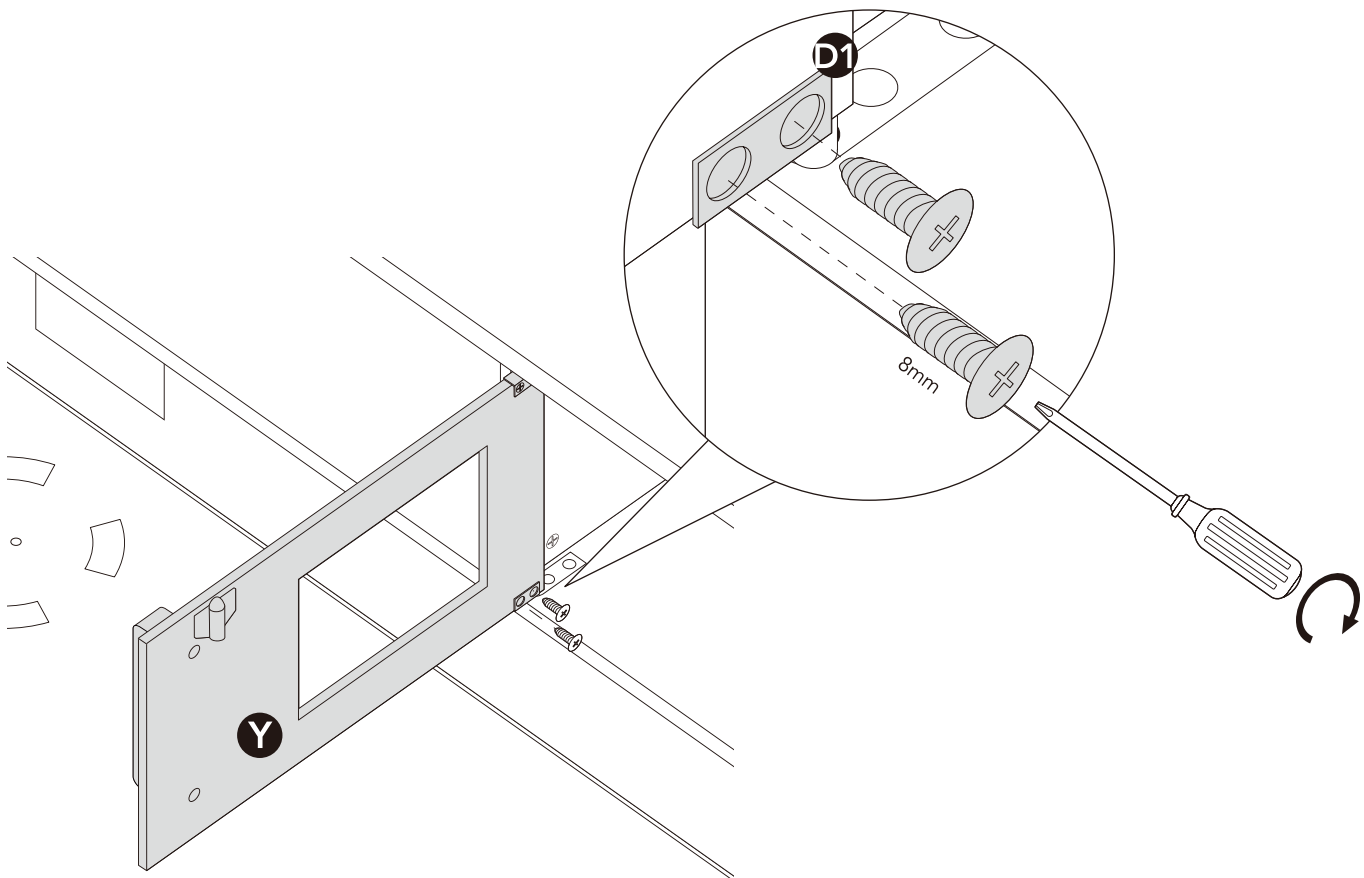




## Step 39

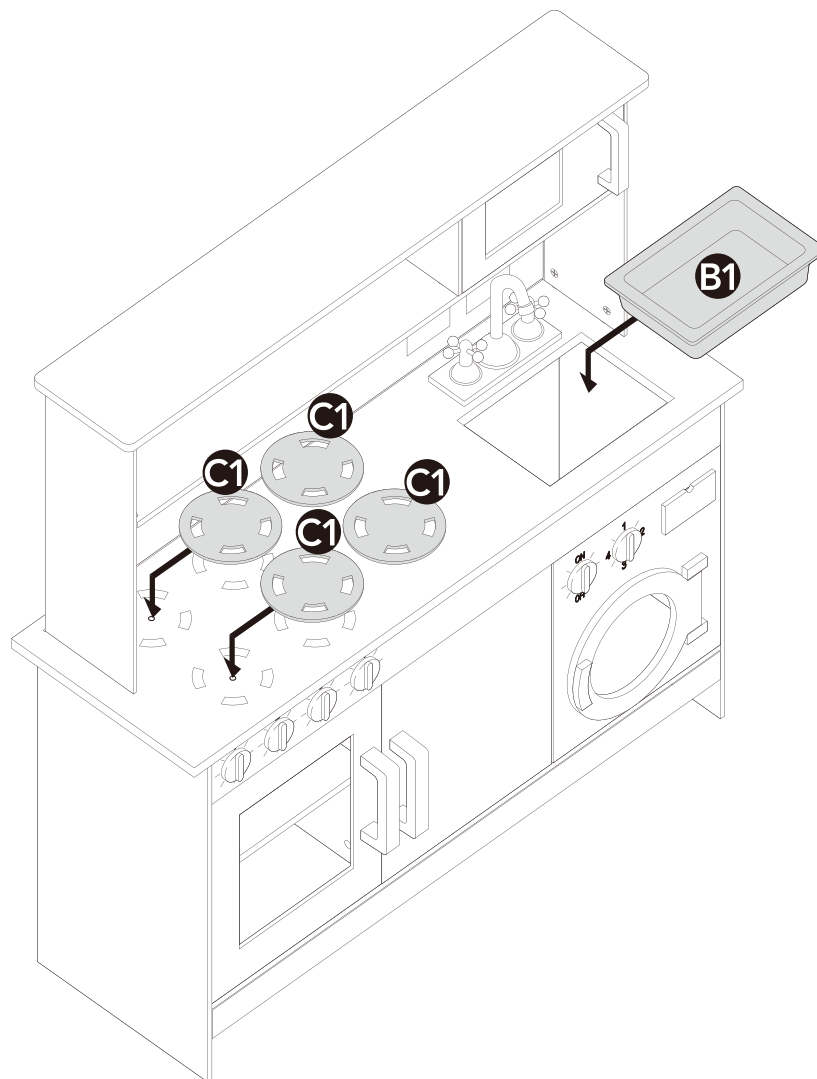


## Step 40

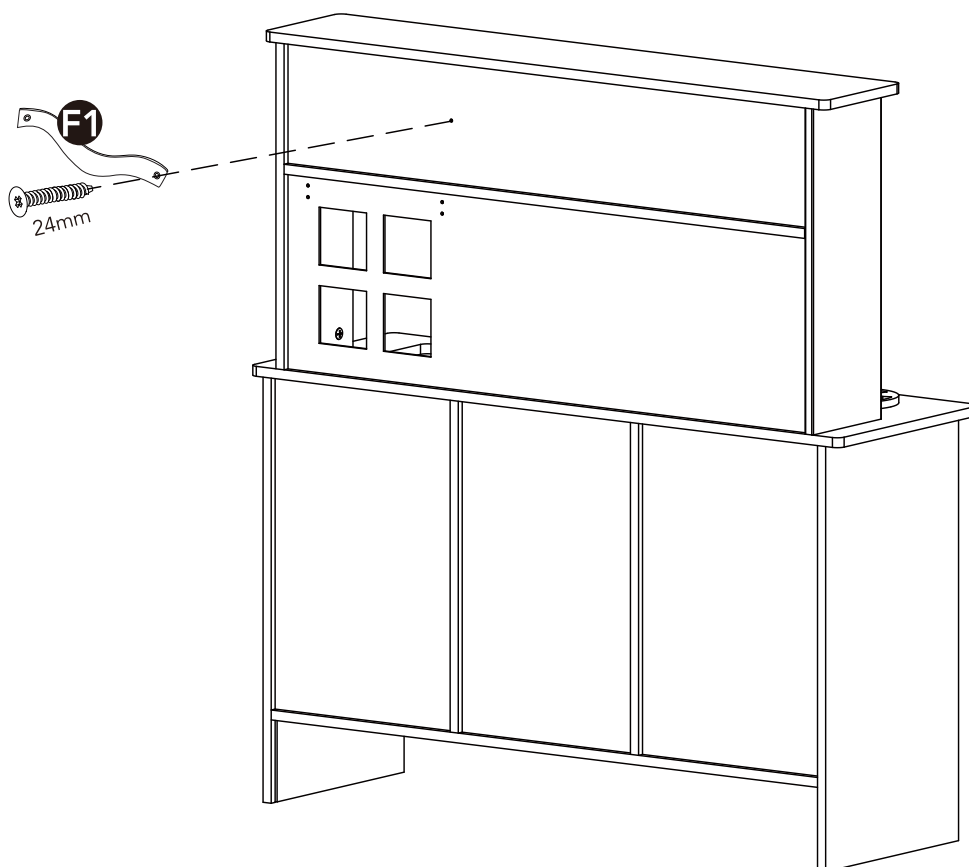




## Step 41

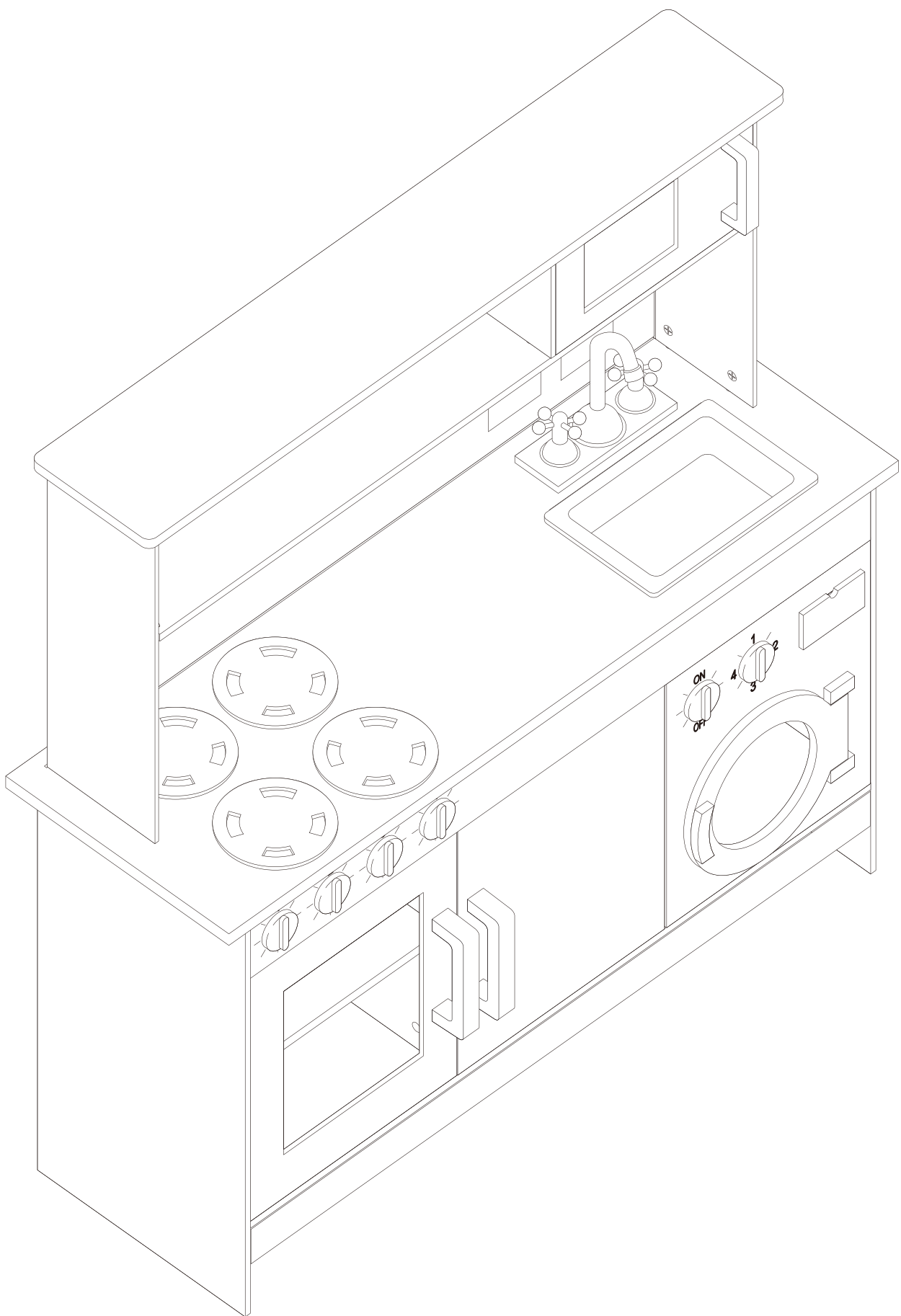


## Step 42





## Step 42



# There are many more wooden role-play toys to purchase and enjoy

**100 DAY**  
**SATISFACTION**  
**GUARANTEE**

If for any reason you're not completely satisfied with our product, return it within 100 days with your proof of purchase, and we'll give you an exchange or a refund. UK Mainland stores only. Excludes franchises.

The guarantee excludes flat pack furniture, which cannot be returned if it has been partly or fully assembled unless faulty or mis-described. Also excludes mattresses, which can't be returned for hygiene reasons once used, unless faulty or mis-described.

**Need something else?**

**www.GEORGE.com**

We have a wide range of accessories and other products that can be ordered direct to your door.

## Customer services information

If you require further information, spare parts or advice regarding your product, or if you are experiencing any problems, please contact customer services at the telephone number or address shown opposite. N.B. When calling or writing please quote the product name.

**Call 0800 952 0101**

## Write

Asda Stores Ltd. Asda House, Southbank, Great Wilson Street, Leeds, LS11 5AD. ASDA, Antrim BT41 4GY.

Product name: **39742 Pink Triple Kitchen**

Product spec code: **505717288895.2025**

## Copyright

© 2025 ASDA Stores Limited.

All other trademarks appearing herein are the property of their representative owners. Specifications are subject to change without notice.

Manufactured for:

ASDA Stores Ltd. Asda House, Southbank, Great Wilson Street, Leeds, LS11 5AD.  
ASDA, Antrim BT41 4GY.

