

**GHPTN001B3D / GHPTN011NB3D
/GHPTN001G3D / GHPTR021BD4D
/ GHPTR021C4D 2-slice toaster**

User Guide

220-240V~ 50-60Hz 950-1150W

IMPORTANT: RETAIN FOR FUTURE REFERENCE

About this guide

We've written this manual to help you get the most from your toaster. Please keep hold of it for future reference.

WARNINGS:

THIS PRODUCT WAS DESIGNED AND MANUFACTURED TO MEET STRICT QUALITY AND SAFETY STANDARDS. THERE ARE, HOWEVER, SOME OPERATION PRECAUTIONS YOU SHOULD BE AWARE OF.



This symbol on the toaster is a safe, cautionary symbol for hot surfaces accessible to users. This symbol alerts you to hot hazards that you can be injured from. CAUTION, hot surface. The surface can be hot and should not be touched without taking care.

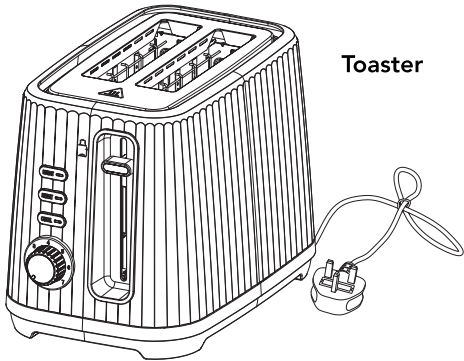
DANGER OF FIRE OR ELECTRIC SHOCK. DO NOT INSERT METAL FOIL, TOOLS OR BREAD THAT IS TOO THICK INTO THE TOASTER.

1. Read all warnings and instructions in this manual to ensure you get the best out of your product.
2. Avoid outdoor and commercial use. This appliance is for household use only. Avoid bathroom use.
3. This appliance can be used by children aged from 8 years and above and persons with reduced physical, sensory or mental capabilities or lack of experience and knowledge if they have been given supervision or instruction concerning use of the appliance in a safe way and understand the hazards involved. Children shall not play with the appliance. Cleaning and user maintenance shall not be made by children unless they are older than 8 and supervised.
4. ASDA does not recommend allowing children to operate this appliance.
5. Keep the appliance and its cord out of reach of children less than 8 years.
6. The appliances are not intended to be operated by means of an external timer or separate remote-control system.
7. The outer surface may get hot when the appliance is operating.
8. Let the appliance cool down in a location out of reach of children or persons with limited mental abilities before cleaning.
9. The bread may burn, therefore do not use the toaster near or below

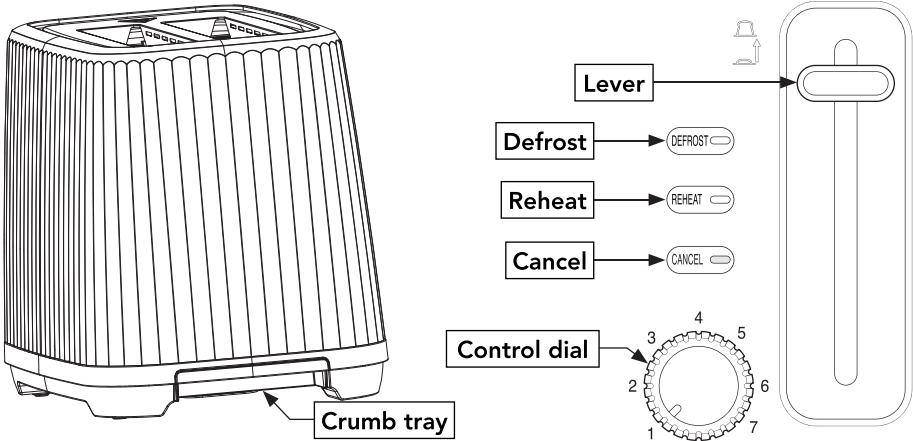
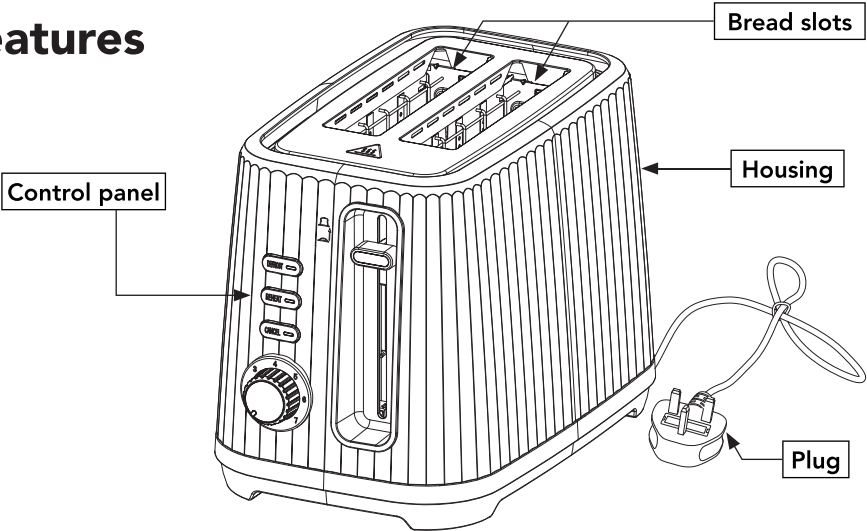
combustible material, such as curtains.

10. If the supply cord is damaged, it must be replaced by the manufacturer, its service agent or similarly qualified persons in order to avoid a hazard.
11. Before connecting the toaster to the power, check the voltage shown on the appliance corresponds with the voltage in your home. If it doesn't, contact your local store.
12. This appliance is classified as protection class I and must be connected to a protective ground.
13. To avoid fire, electric shock, or injury, never immerse the toaster, cord, or plug in water or liquid.
14. Keep away from harsh or abrasive cleaning agents or solvents.
15. Remove all protective wrapping prior to use.
16. Do not use if the appliance, cord or plug is damaged.
17. Always place on a firm, level surface, out of reach of children.
18. Do not wrap or wind the cord under the bottom of the toaster when the toaster is in use.
19. If the toast starts to smoke press Cancel immediately.
20. Avoid toasting food that has been buttered or covered with toppings.
21. The cord shouldn't hang over the edge of a table or counter, or touch a hot surface.
22. Keep away from hot gas, electric burners and ovens.
23. Don't attempt to dislodge food while the toaster is in use. After use, take the bread out carefully to avoid injury. If the bread is jammed, unplug the toaster before trying to remove (we recommend using sliced bread to avoid jamming).
24. Be sure not to damage the internal mechanism or heating elements when removing bread.
25. Unplug when not in use and before cleaning.
26. Do not use attachments not recommended by the manufacturer.
27. Don't use the toaster for anything other than its intended use.
28. Please don't dismantle. If a fault occurs have the toaster inspected in a qualified repair shop or return to us at ASDA.
29. Do not leave unattended when in use.

What's in the box

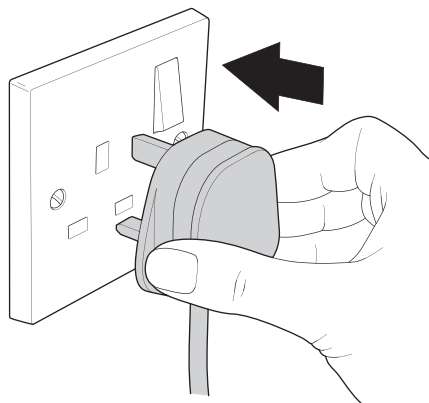


Features

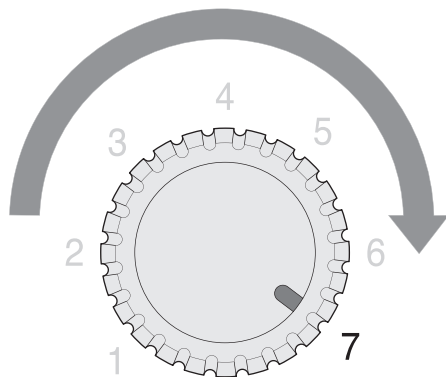


IMPORTANT: Due to manufacturing residue such as oil remaining in the toaster or on the heat elements, it is usual for the toaster to emit an odour when used for the first few times. This is normal and will not occur after heating the toaster up following the steps below.

1. Slot the plug on the toaster into a mains socket and turn the power on.

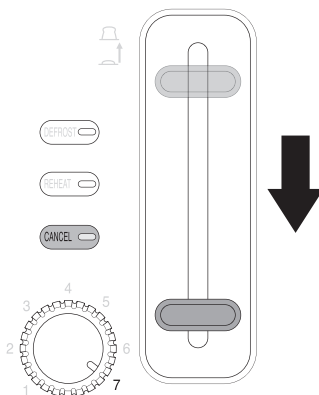


2. Set the colour control dial to number 7.

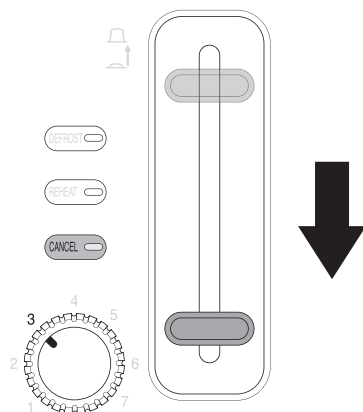


3. Push the carriage handle down until it locks in place. The **CANCEL** button will be illuminated showing the toaster is working.

IMPORTANT: The smoke emitted from the toaster may be sufficient to set a smoke alarm off. Please open a window when performing this task.



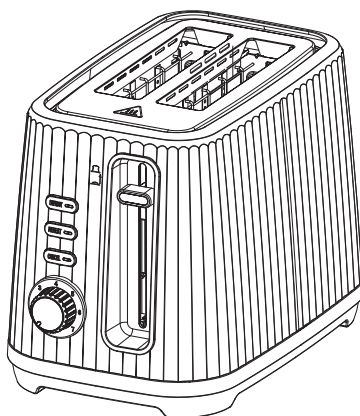
4. Wait for the carriage handle to pop upwards.



5. Allow the toaster to cool, then repeat.

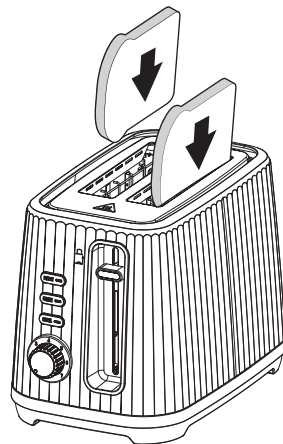


6. When no more odour is emitted the toaster is ready for use.

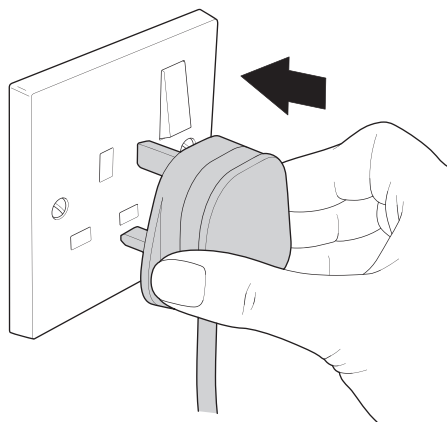


Use Your Toaster

1. Check that the crumb tray at the back of the toaster is fully inserted, then slot one or two slices of bread into the bread slots in the top of the toaster.

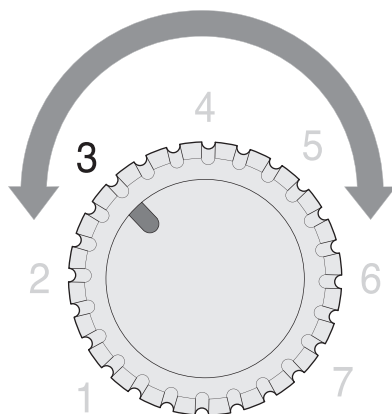


2. Slot the plug on the toaster into a power socket and switch on.

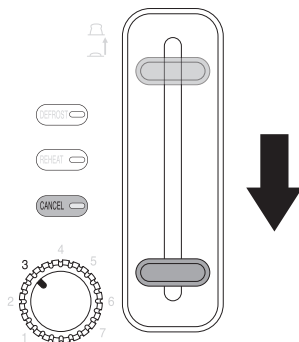


3. Set the colour control dial to the desired setting, position **1** being the lightest and **7** being the darkest.

You may want to start at setting **3** and then adjust to your taste (bread may be slightly more toasted when only toasting one slice or when using for extended periods of time).

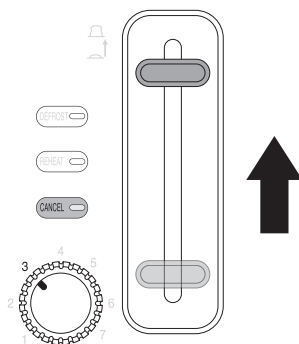


4. Press the lever down until it locks into place and the Cancel light is illuminated (this will only happen when the toaster is plugged in and switched on). Once the bread has been toasted the lever will automatically spring back up and can be lifted slightly further upward to easily remove the toast.

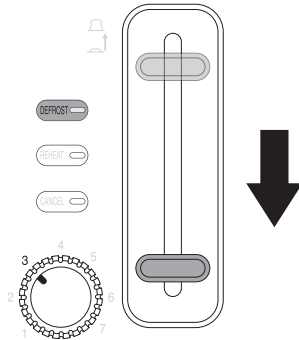


5. If you want to stop toasting at any point, just press the **Cancel** button and the lever will spring up.

Please don't try to manually force it up as this could damage the toaster.

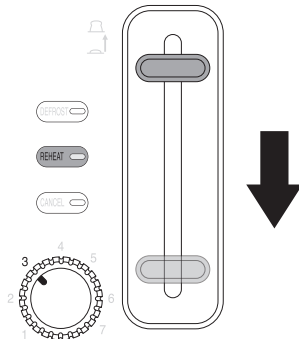


6. Frozen bread can still be toasted. Simply set the control dial to the desired position, push the lever down and press the **Defrost** button so it illuminates.



7. For reheating cold toast, just place the toast into the bread slots, push the lever down and press the **Reheat** button.

You don't need to use the control dial as the reheat mode has a set time.



Cleaning your toaster

Make sure the toaster is disconnected from the power and is completely cool.

1. Use a damp cloth to clean the outside (don't use abrasive cleaners, as these can damage the surface of the toaster, or metal polish).
2. You should regularly pull out the crumb tray at the back of the toaster and dispose of the contents. This should be done once a week if the toaster is used regularly. Always make sure the tray is inserted back in properly before using the toaster.
3. When not in use or when placed in storage, the power cord should be wound under the bottom of the toaster.

Notes



If for any reason you're not completely satisfied with our product, return it within 100 days with your proof of purchase, and we'll give you an exchange or a refund.

UK Mainland stores only.

Excludes franchises.

The guarantee excludes flat pack furniture, which can't be returned if it has been partly or fully assembled unless faulty or mis-described.

Also excludes mattresses, which can't be returned for hygiene reasons once used, unless faulty or mis-described.



For PDF copy of this manual please scan QR code and search for model number



Customer services information

If you require further information, spare parts or advice regarding your product, or if you are experiencing any problems, please contact customer services at the telephone number or address shown opposite. N.B. When calling or writing please quote the product name.

Call

0800 952 0101

Write

ASDA, Leeds LS11 5AD

Product name: **GHPTN001B3D / GHPTN011NB3D / GHPTN001G3D / GHPTR021BD4D / GHPTR021C4D 2-slice toaster**

Product site code: **15A.06.23.047 / 15A.06.23.051 / 15A.06.23.049 / 15A.06.24.155 / 15A.06.24.156**



To qualify for the 2 year warranty the appliance must have been used according to the manufacturer's instructions. For example kettles should have been regularly de-scaled.

If your appliance stops working or develops a fault then return it to your nearest store and we will happily replace or refund the item, with exception of the below exclusions:

EXCLUSIONS

ASDA shall not be liable to replace goods under the terms of the warranty where:

1. The fault has been caused or is attributable to accidental use, misuse, negligent use or use contrary to the user manual's recommendations or where the fault has been caused by power surges or damage caused in transit.
2. The appliance has been used on a voltage supply other than that described on the product rating label.
3. Repairs have been attempted by persons other than our service staff (or authorised dealer).
4. Where the appliance has been used for hire purposes or non-domestic use.
5. ASDA are not liable to carry out any type of servicing work, under the warranty.

This warranty does not confer any rights other than those expressly set out above and does not cover any claims for consequential loss or damage. This warranty is offered as an additional benefit and does not affect your statutory rights as a consumer.

If for any reason this item is replaced during the 2 year warranty period, the warranty on the new item will be calculated from original purchase date. It is vital to retain your original proof of purchase to indicate the date of initial purchase.

Copyright

© 2024 ASDA Stores Limited.

All other trademarks appearing herein are the property of their representative owners. Specifications are subject to change without notice.

Manufactured for:

ASDA, Leeds LS11 5AD/

ASDA, Antrim BT41 4GY.

Disposal

This symbol on the product or in the instructions means that your electrical and electronic equipment should be disposed at the end of its life separately from your household waste. There are separate collection systems for recycling in the UK.

For more information, please contact the local authority or your retailer where you purchased the product.

