



GHMABN001B4D

Multi-attachment Blender

User Guide

220-240V~, 50-60Hz, 320W

IMPORTANT: RETAIN FOR FUTURE REFERENCE

About this guide

We've written this manual to help you get the most from your multi-attachment blender. Please keep hold of it for future reference.

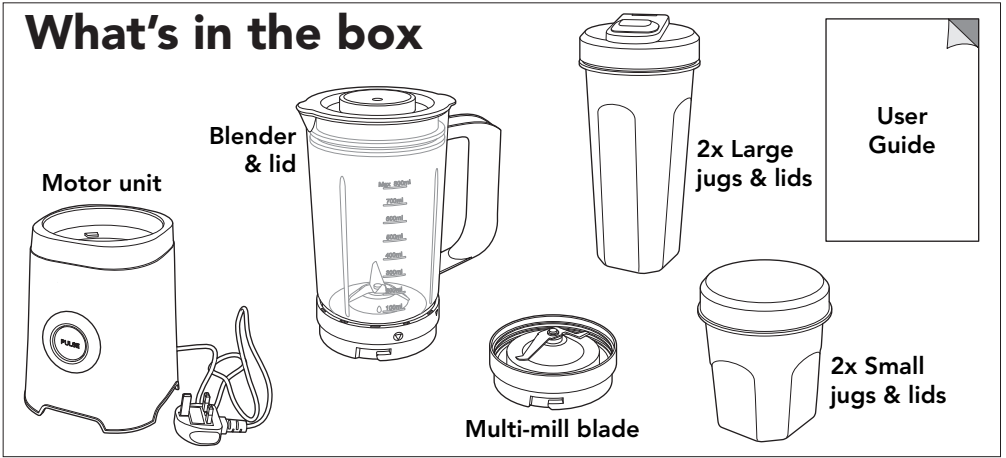
WARNINGS:

THIS PRODUCT WAS DESIGNED AND MANUFACTURED TO MEET STRICT QUALITY AND SAFETY STANDARDS. THERE ARE, HOWEVER, SOME OPERATION PRECAUTIONS YOU SHOULD BE AWARE OF.

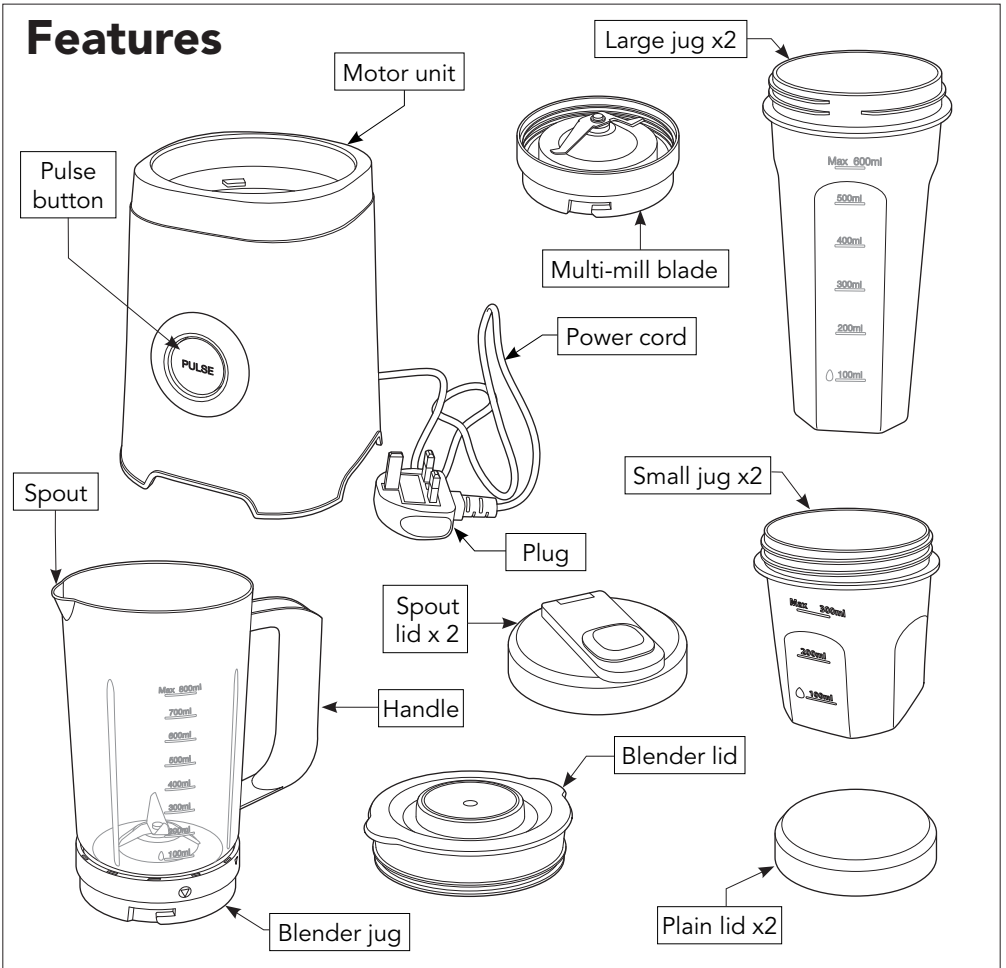
- 1. IMPORTANT SAFETY INSTRUCTIONS. PLEASE READ ALL INSTRUCTIONS CAREFULLY BEFORE USE. RETAIN FOR FUTURE REFERENCE**
2. Before using check that the mains voltage corresponds to the one shown on the appliance nameplate.
3. Do not let cord hang over a hot surface, edge of a table or counter.
4. Do not place on or near a hot gas or electric burner, or in a heated oven.
5. Do not operate any appliance with a damaged cord or plug, after an appliance malfunction, or if the appliance has been damaged in any manner. Return the appliance to the nearest authorised service facility for examination, repair or adjustment.
6. If the supply cord is damaged, it must be replaced by the manufacturer, its service agent or similarly qualified person in order to avoid a hazard.
7. Avoid contact with moving parts.
8. Do not leave foreign objects, such as spoons, forks, knives or a measuring cup, in the jug as this will damage the blades and other components when starting the machine and may cause injury.
9. **Danger of injury!** Care shall be taken when handling the sharp cutting blades, emptying the bowl and during cleaning.
10. The use of attachments not recommended or sold by manufacturer may cause fire, electric shock or injury.

11. Do not blend hot liquids or ingredients; this may cause a hazard.
12. Always disconnect the appliance from the supply if it is left unattended and before assembling, disassembling or cleaning.
13. Never leave the appliance unattended while it is running.
14. To protect against risk of electrical shock do not put motor unit or power cord in water or other liquid.
15. Never put non-food items into the jug to blend.
16. Never try to remove the jug when the blender is running.
17. This appliance shall not be used by children. Keep the appliance and its cord out of reach of children.
18. This appliance can be used by persons with reduced physical, sensory or mental capabilities or lack of experience and knowledge if they have been given supervision or instruction concerning use of the appliance in a safe way and if they understand the hazards involved.
19. Children shall not play with the appliance.
20. This appliance is intended to be used in household only. Do not use outdoors.
21. Risk of injury from misuse. Do not use appliance for other than intended purpose.
22. Switch off the appliance and disconnect from supply before changing accessories or approaching parts that move in use.
23. **WARNING:** Do not place the blade unit on the motor unless the bottle is attached properly.
24. The bottle and blade unit must be properly tightened, sealed and placed correctly on the motor before use.
25. Regarding the instructions for cleaning surfaces. Please refer to chapter "CLEANING".
26. Ensure the blender lid is securely fastened before use.

What's in the box



Features



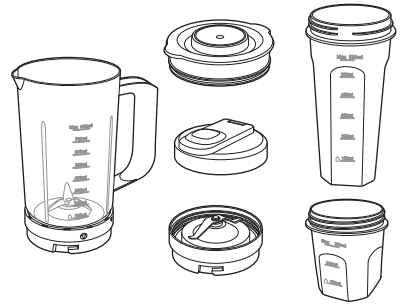
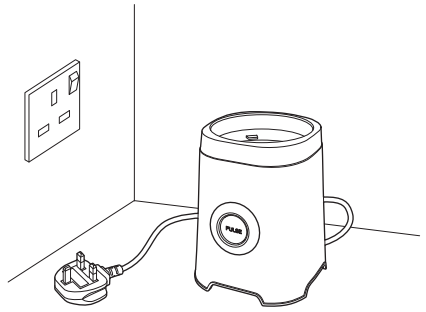
Preparing the blender

1. Place the motor unit on a flat, stable and level surface near a power socket so that the power cord is not over stretched and you have easy access to the socket.
2. Wash the jugs, blender, lids and Multi-mill blade in warm soapy water, then rinse and thoroughly dry with a soft cloth.

CAUTION: The blades are sharp, take care when cleaning.

3. Wipe the motor unit with a damp cloth and dry with a soft lint free cloth.

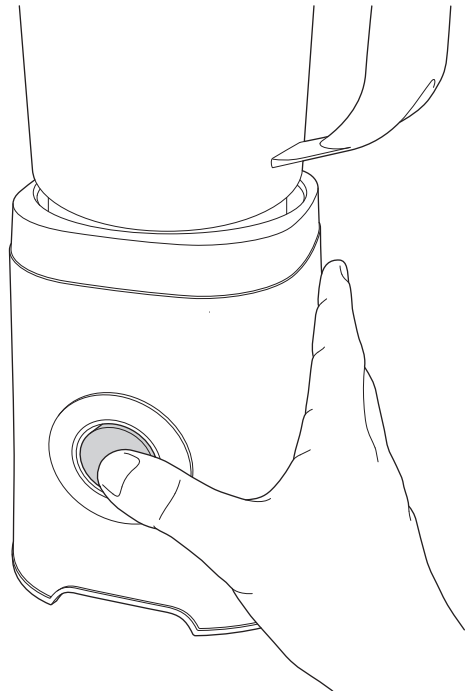
IMPORTANT: Never immerse the motor unit in water or any other liquid.




Pulse button

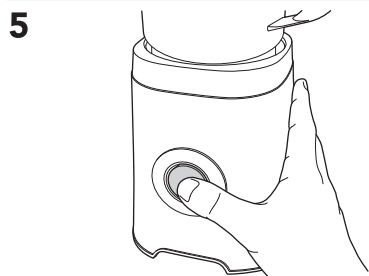
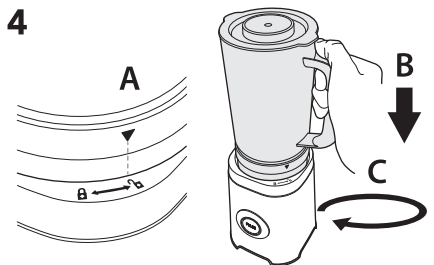
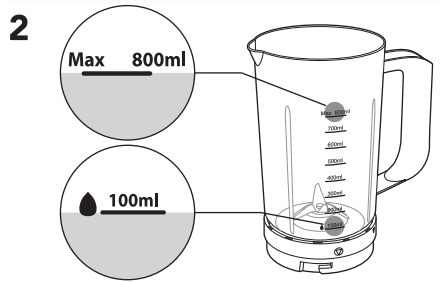
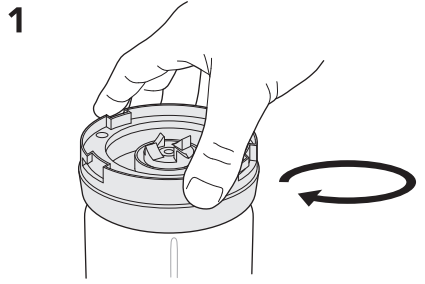
Press the **PULSE** button to start blending, release the **PULSE** button to stop blending.

IMPORTANT: Only run the motor for a maximum of 60 seconds in one go, then allow 2 minutes for the motor to cool.



Using as a blender

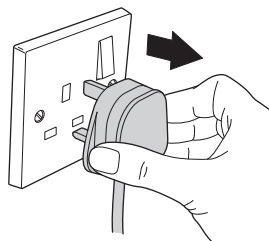
1. Check the blades on the bottom of the blender are fully tightened by turning them clockwise.
2. Fill the jug with the ingredients, ensure you add ingredients above the 100ml mark on the side of the blender jug, Ensure you do not fill the jug above the MAX 800ml line.
3. Slot the blender lid into the top of the blender jug. Rotate the lid until one of the tabs on the lid covers the spout on the blender jug to prevent spillages.
4. Align the arrow on the bottom of blender jug with the  symbol on the motor unit (A). Slot the blender jug into the top of the motor unit (B), turn the blender jug clockwise until it locks into the motor unit (C). Plug the blender into a mains socket.
5. Press the **PULSE** button inwards to blend the ingredients, never press the **PULSE** button for more than 60 seconds, after running for 60 seconds, allow the motor unit to cool for 2 minutes.



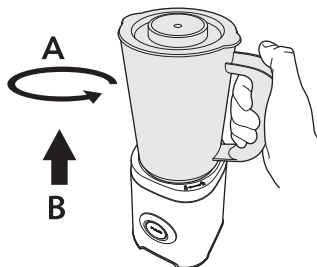
6. **IMPORTANT:** Always remove the plug from the socket before removing the blender from the motor unit.
7. After blending, remove the plug from the wall socket then turn the jug anti-clockwise (A). Lift the jug off the top of the motor unit (B).
8. Push the tab on the back of the lid upwards to remove the blenders lid.
9. Use the blended ingredients from the blender jug and use straight away or place in another container for future use.
10. Wash the blender jug and cutting blades in warm soapy water after use then dry with a soft cloth.

IMPORTANT: It is recommended that the jugs should only contain food for a maximum of 4 hours, the maximum temperature should not exceed 60 degrees Celsius, and should not be in contact with oily foods.

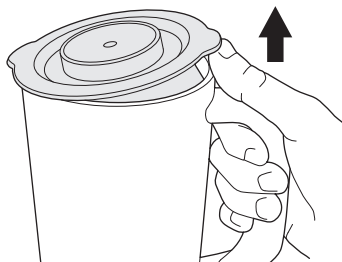
6



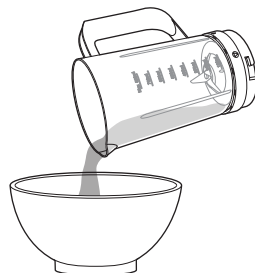
7



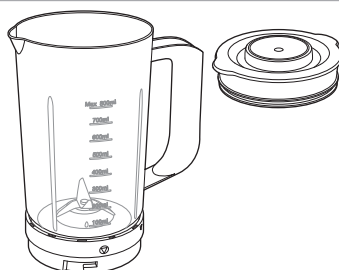
8





9



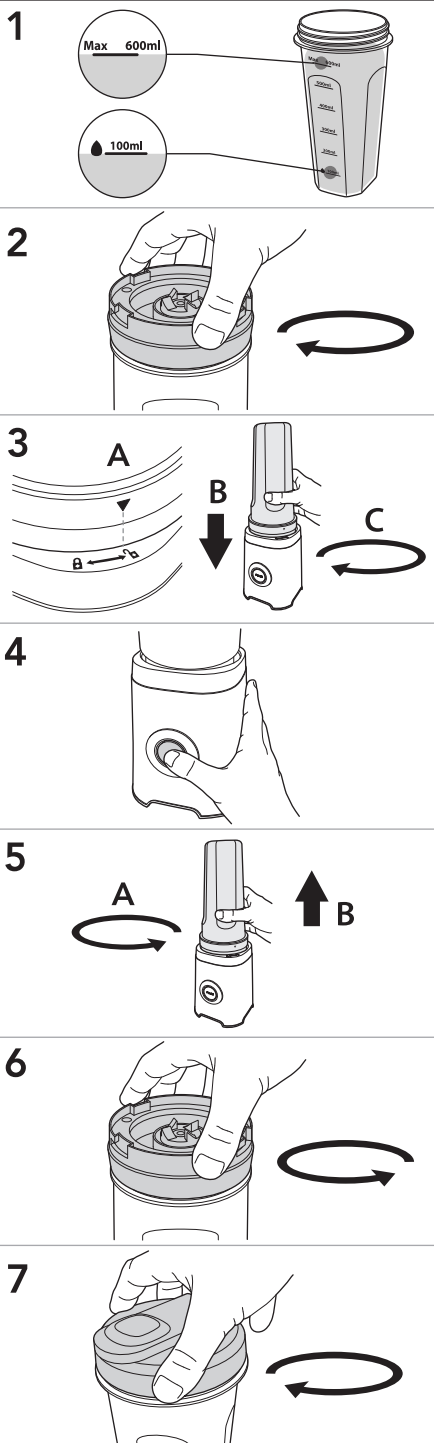
10



Using as a smoothy maker

1. Fill either a large or small jug with the ingredients, ensure you do not fill the jug above the MAX line on the side of the jug.
2. Screw the blade assembly clockwise onto the top of the jug.
3. Align the arrow on the blender jug with the  symbol on the motor unit (A). Slot the blender jug into the top of the motor unit (B), Turn the blender jug clockwise (C) until the jug is locked into the motor unit.
4. Turn the control dial to the desired setting and blend the ingredients in the jug to the desired consistency (see page 5) . Turn the control dial to the 0 position to turn the blender off
5. After blending, remove the plug from the wall socket then turn the jug anti-clockwise (A) until the arrow on the jug aligns with the  symbol on the motor unit (B). Lift the jug off the top of the motor unit (C).
6. Remove the blade assembly by unscrewing anti-clockwise.
7. You can screw a jug lid onto the jug if you wish to keep the contents for later use.

IMPORTANT: It is recommended that the jugs should only contain food for a maximum of 4 hours, the maximum temperature should not exceed 60 degrees Celsius, and should not be in contact with oily foods.



Other functions

Crushed ice: Use ice cubes that are a maximum of 15mm square. If the ice is larger break it up using a knife. Add no more than 10 ice cubes to a jug. Attach the blade assembly then connect to the motor unit. Press the **PULSE** button and allow to run for 60 seconds. If using a smaller quantity of ice, 60 seconds may be too long.

Fruit & vegetables: Cut the fruit or vegetables a maximum of 15mm square. You will need to add 2 parts of fruit or vegetable to 3 parts of liquid, do not exceed the MAX line on the jug when filling. Attach the blade assembly to the jug and then attach to the motor unit. Press the **PULSE** button and blend until smooth.

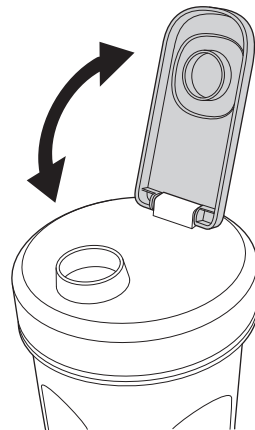
Grinding: Put MAX 60g coffee beans or nuts into the small jug. Attach the multi-mill blade to the small jug and then connect to the motor unit. Press the **PULSE** button to grind.

IMPORTANT: Do not grind more than 45s each time. Wait until the unit is cooled to room temperature before performing next operation.

Spout lids

The Spout lids have a built in drinking spout. Lift the spout cover upwards to open.

Push the spout cover down until it locks with a click to close.



CLEANING

1. Always switch the blender off at the mains socket and unplug before dismantling and cleaning.
2. Never wash any parts of the blender in a dishwasher.
3. Wipe the motor unit with a damp cloth, never immerse in water. Never allow the motor unit, power cord or plug to get wet.
4. For easy cleaning you can partially fill the jugs or blender jug with warm soapy water and replace the blade assembly. Now rotate the control dial to the pulse setting to clean the blades and the jugs. Use the pulse setting several times then remove the jugs and rinse out with warm running water.
5. Leave the jugs and blade upside down on a draining board to dry.

STORING

IMPORTANT: Never store the blender when it is still hot after being used. Always allow it to cool completely then place it back in its box and store out of the reach of children. Ensure all parts are clean and dry before storing.

TIPS

- To ensure your blender has a long life, do not run it for longer than 60 seconds. Stop the blender and allow to cool for 10 minutes between blending cycles.
- Switch the blender off as soon as you get to the right consistency.
- **IMPORTANT** the blender will not work if the jug has not been correctly fitted.
- Always switch the blender off at the mains socket before removing the food jug.
- When blending thick mixtures, e.g. pâté and dips, you may need to scrape down the inside of the food jug. If the mixture is difficult to blend add a bit more liquid.
- **NEVER** switch the blender on if the jug is empty. The bearing on the cutter may be damaged.
- For the best circulation of the food that you are going to blend with liquids, pour the liquids into the jug first then add the solid items.



If for any reason you're not completely satisfied with our product, return it within 100 days with your proof of purchase, and we'll give you an exchange or a refund.

UK Mainland stores only.

Excludes franchises.

The guarantee excludes flat pack furniture, which can't be returned if it has been partly or fully assembled unless faulty or mis-described.

Also excludes mattresses, which can't be returned for hygiene reasons once used, unless faulty or mis-described.



For PDF copy of this manual please scan QR code and search for model number



Customer services information

If you require further information, spare parts or advice regarding your product, or if you are experiencing any problems, please contact customer services at the telephone number or address shown opposite. N.B. When calling or writing please quote the product name.

Call

0800 952 0101

Write

Asda Stores Ltd. Asda House, Southbank, Great Wilson Street, Leeds, LS11 5AD

Product name: **GHMABN001B4D**
GH Multi-attachment Blender

Product site code: **15A.06.24.111**



To qualify for the 2 year warranty the appliance must have been used according to the manufacturer's instructions. For example kettles should have been regularly de-scaled.

If your appliance stops working or develops a fault then return it to your nearest store and we will happily replace or refund the item, with exception of the below exclusions:

EXCLUSIONS

ASDA shall not be liable to replace goods under the terms of the warranty where:

1. The fault has been caused or is attributable to accidental use, misuse, negligent use or use contrary to the user manual's recommendations or where the fault has been caused by power surges or damage caused in transit.
2. The appliance has been used on a voltage supply other than that described on the product rating label.
3. Repairs have been attempted by persons other than our service staff (or authorised dealer).
4. Where the appliance has been used for hire purposes or non-domestic use.
5. ASDA are not liable to carry out any type of servicing work, under the warranty.

This warranty does not confer any rights other than those expressly set out above and does not cover any claims for consequential loss or damage. This warranty is offered as an additional benefit and does not affect your statutory rights as a consumer.

If for any reason this item is replaced during the 2 year warranty period, the warranty on the new item will be calculated from original purchase date. It is vital to retain your original proof of purchase to indicate the date of initial purchase.

Copyright

© 2024 ASDA Stores Limited.

All other trademarks appearing herein are the property of their representative owners. Specifications are subject to change without notice.

Manufactured for:
ASDA, Leeds LS11 5AD /
ASDA, Antrim BT41 4GY.

Disposal

This symbol on the product or in the instructions means that your electrical and electronic equipment should be disposed at the end of its life separately from your household waste. There are separate collection systems for recycling in the UK.

For more information, please contact the local authority or your retailer where you purchased the product.

