



To qualify for the 2 year warranty the appliance must have been used according to the manufacturer's instructions. For example kettles should have been regularly de-scaled.

If your appliance stops working or develops a fault then return it to your nearest store and we will happily replace or refund the item, with exception of the below exclusions:

EXCLUSIONS

- ASDA shall not be liable to replace goods under the terms of the warranty where:
1. The fault has been caused or is attributable to accidental use, misuse, negligent use or use contrary to the user manual's recommendations or where the fault has been caused by power surges or damage caused in transit.
 2. The appliance has been used on a voltage supply other than that described on the product rating label.
 3. Repairs have been attempted by persons other than our service staff (or authorised dealer).
 4. Where the appliance has been used for hire purposes or non-domestic use.
 5. ASDA are not liable to carry out any type of servicing work, under the warranty.

This warranty does not confer any rights other than those expressly set out above and does not cover any claims for consequential loss or damage. This warranty is offered as an additional benefit and does not affect your statutory rights as a consumer.

If for any reason this item is replaced during the 2 year warranty period, the warranty on the new item will be calculated from original purchase date. It is vital to retain your original proof of purchase to indicate the date of initial purchase.

Copyright

© 2024 ASDA Stores Limited.
All other trademarks appearing herein are the property of their representative owners. Specifications are subject to change without notice.
Manufactured for:
ASDA, Leeds LS11 5AD/
ASDA, Antrim BT41 4GY.

Disposal

This symbol on the product or in the instructions means that your electrical and electronic equipment should be disposed at the end of its life separately from your household waste. There are separate collection systems for recycling in the UK. For more information, please contact the local authority or your retailer where you purchased the product.



George.
home



GHHB01B4J GH HOT AIR BRUSH

User Guide

220-240V~ 50-60Hz 1200W

IMPORTANT: RETAIN FOR FUTURE REFERENCE

About this guide

We've written this manual to help you get the most from your hot brush. Please keep hold of it for future reference.

WARNINGS:

THIS PRODUCT WAS DESIGNED AND MANUFACTURED TO MEET STRICT QUALITY AND SAFETY STANDARDS. THERE ARE, HOWEVER, SOME OPERATION PRECAUTIONS YOU SHOULD BE AWARE OF.

WARNING: TO AVOID RISK OF ELECTRIC SHOCK ALWAYS REMOVE THE PLUG FROM THE MAINS SOCKET AFTER USE.



WARNING: Do not use this appliance near bathtubs, showers, basins or other vessels containing water.

1. Read all warnings & instructions in this manual to ensure you get the best out of your product.
2. **WARNING:** Do not use this appliance near water.
3. When the hot air brush is used in a bathroom, unplug it after use since the proximity of water presents a hazard even when the product is switched off.
4. For additional protection, the installation of a residual current device (RCD) having a rated residual operating current not exceeding 30 mA is advisable in the electrical circuit supplying the bathroom. Ask your installer for advice.
5. This appliance can be used by children aged from 8 years and above and persons with reduced physical, sensory or mental capabilities or lack of experience and knowledge if they have been given supervision or instruction concerning use of the appliance in a safe way and understand the hazards involved. Children shall not play with the appliance. Cleaning and user maintenance shall not be made by children without supervision.
6. Children should be supervised to ensure that they do not play with the appliance. ASDA do not recommend allowing children to use this appliance.
7. If the supply cord is damaged, it must be replaced by the manufacturer, its service agent or similarly qualified persons in order to avoid a hazard.
8. Always unplug the hot air styler after use.
9. Do not use or store the hot air styler where it can come into contact with water.
10. This hot air styler should never be left unattended when plugged in.



If for any reason you're not completely satisfied with our product, return it within 100 days with your proof of purchase, and we'll give you an exchange or a refund.

UK Mainland stores only.
Excludes franchises.

The guarantee excludes flat pack furniture, which can't be returned if it has been partly or fully assembled unless faulty or mis-described.

Also excludes mattresses, which can't be returned for hygiene reasons once used, unless faulty or mis-described.

Need
something
else?

www.GEORGE.com

We have a wide range of accessories and other products that can be ordered direct to your door.

For PDF copy of this manual please scan QR code and search for model number



ASDA
technical support
0333 600 7700

Customer services information

If you require further information, spare parts or advice regarding your product, or if you are experiencing any problems, please contact customer services at the telephone number or address shown opposite. N.B. When calling or writing please quote the product name.

Call

0800 952 0101

Write

ASDA, Leeds LS11 5AD

Product name: GHHB01B4J GH HOT AIR BRUSH

Product site code: 15B.09.24.136

Basic styling guide

1. Shampoo and condition your hair. Rinse the hair thoroughly. Towel blot hair to remove excess moisture. Divide your hair into sections. Direct the hot air styler through the hair one section at a time. Move the styler steadily across each section so that hot air passes through hair. Direct air flow at hair, not scalp.
2. Keep the hot air brush air intake vents unobstructed and free from hair while using.
3. To avoid over-drying, do not concentrate heat on any one section for any length of time. Keep the product moving as you style.
4. For quick styling, dampen hair with a mist of water before styling with the product.
5. When using the brush to create curls and waves, dry hair almost completely on the warmest setting, then finish styling using the lower setting. This will set the style in your hair.

Cleaning

Important: Before you do any of the following, make sure the hot air brush is unplugged from the mains supply.

- Do not use liquid or aerosol cleaners.
- Clean your appliance with a soft, damp (not wet) cloth.
- Ensure the intake grill is kept free from hair and dust.

Your hot brush does not work?

- Make sure it is plugged into the mains supply and switch on.
- Make sure the control switch is set to one of the three on positions.
- Check the fuse in the plug has not blown.

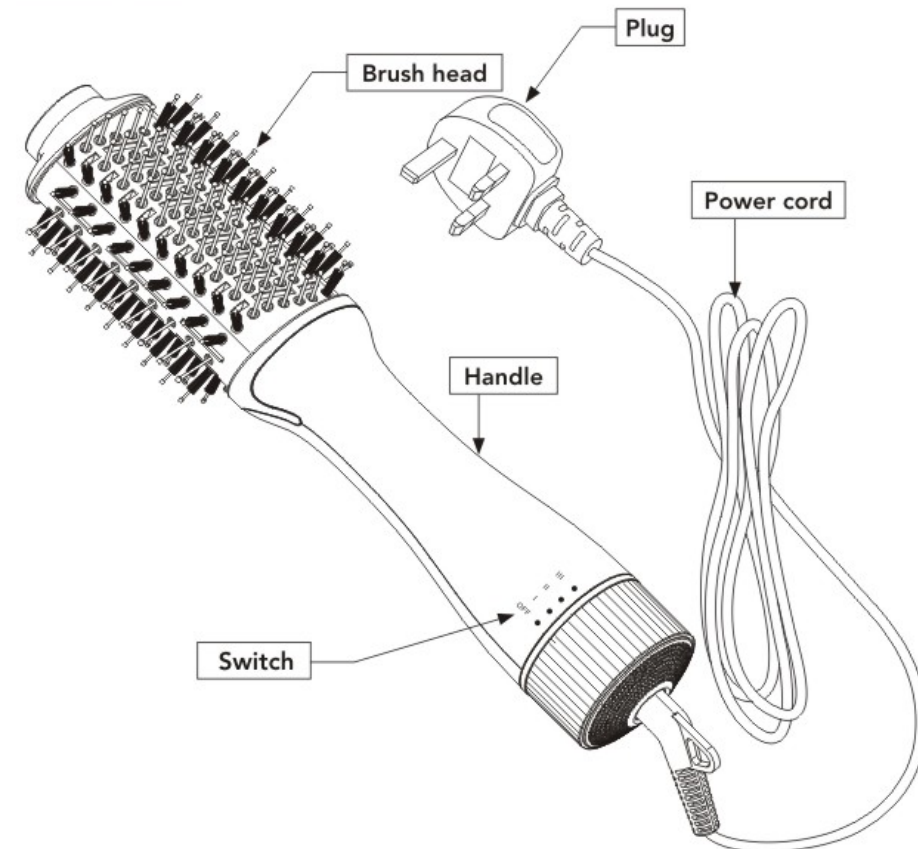
11. Do not pull or wrap power cord around the hot air brush;
12. Close supervision is necessary when this appliance is used by, on , or near children.
13. Do not use attachments not recommended by the manufacturer.
14. Never operate the hot air styler if it has a damaged cord or plug or if it has been dropped into water. Return the appliance to a service centre for examination and repair.
15. Keep the cord away from heated surfaces.
16. Never block the air vents at the rear of the hot air brush or place it on a soft surface where the air vents free of dust, hair, etc. Do not insert any objects into the air vents.
17. Do not use outdoors, or where aerosol products are being used.
18. Do not direct hot air toward eyes.
19. Attachments may get hot in use. Use care when handling them.
20. Do not put the hot air styler down while it is operating.
21. Check that the voltage rating of this appliance matches that of your supply.
22. If the appliance falls into water, **UNPLUG IT IMMEDIATELY**. Do not reach into the water until the power has been disconnected.
23. Do not use the appliance if the power cord is damaged.
24. The mains lead of this appliance is not replaceable by the user. If the supply cord is damaged, it must be replaced by the manufacturer, its service agent or similarly qualified persons in order to avoid a hazard.
25. Position the power supply lead so that it is not likely to be walked on or pinched by things placed on or against them.
26. Do not use the hot air styler in humid or damp conditions. Do not allow the appliance to get wet i.e. dripping or splashing, as this may be dangerous.
27. The slots and openings on the appliance are for ventilation. Do not cover or block them as it could lead to overheating.
28. **NEVER** let children push anything into the holes or slots on the hot air styler.
29. Burn hazard. Keep appliance out of reach from young children, particularly during use and cool down;
30. When the appliance is connected to the power supply, never leave it unattended;
31. Always place the appliance with the stand, if any, on a heat-resistant, stable flat surface.

What's in the box



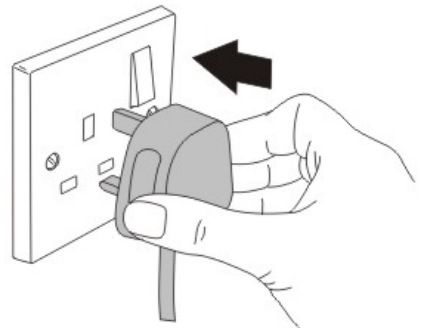
User
Guide

Features



Using your Air brush

1. Unwind the power cable and slot the plug into a mains socket and turn the power on if required.



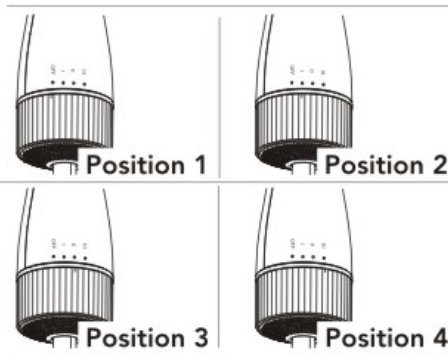
2. Slide the control switch to one of the three settings:

Position 1: Off

Position 2: High Air Flow (Low Heat)

Position 3: Low Air Flow (Med Heat)

Position 4: High Air Flow (High Heat)



3. After you have finished styling your hair, remove the plug from the mains socket and place the brush on a heat resistant surface and allow it to cool before storing.

