

# Our total carbon footprint

When combined with our existing Scope 1 and 2 data, we are now able to establish a value chain baseline for our carbon emissions and have committed to setting a Scope 1, 2, 3 and FLAG<sup>1</sup> science-based target. We'll set this ahead of our previous 2025 deadline.

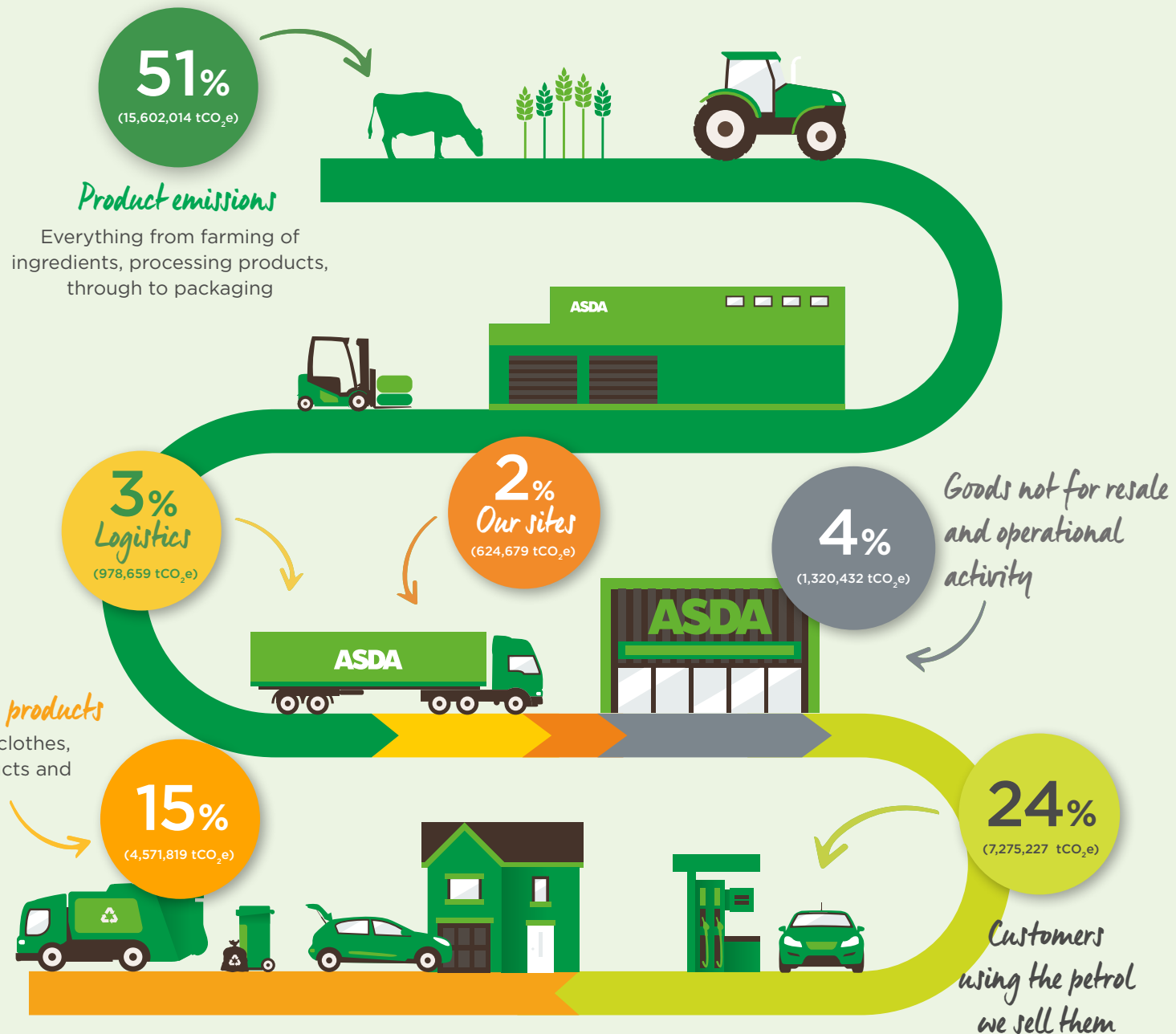
While undertaking this work, we continue to engage suppliers, dedicating our 2021 supplier sustainability conference to asking 150 of our strategic supplier partners to make climate commitments for the products they sell us before the end of 2022.

*Our full carbon footprint baseline is 30,372,830 tCO<sub>2</sub>e (-2% on 2020)*



## Understanding our climate impact across the value chain

In 2021, we worked with the Carbon Trust on a landmark project to model our Scope 3 GHG footprint<sup>2</sup>.



<sup>1</sup> Forest, Land and Agriculture (FLAG)

<sup>2</sup> The model covers where we have either operational control or a significant ability to influence either directly or indirectly and all goods directly purchased by Asda to be sold to end customers. Exclusions to the model: upstream and downstream leased assets, downstream transportation and distribution, processing of sold products and Asda franchises.